

Wild Earth Travel

Small Ships, Big Adventures

wildearth-travel.com

info@wildearth-travel.com

19 DAYS LUXURY AUSTRALIA CRUISE - DARWIN TO FREMANTLE

Join us on a luxurious journey from Darwin to Fremantle, encountering islands, scattered archipelagos, and marine mammals. Unique natural colours light up this incredible expedition - from red rocks and cobalt blue waters to the shining teeth of elusive saltwater crocodiles. Experience the otherworldly Montgomery Reef, where the tide pulls back to reveal underwater treasures - look out for sea turtles, dolphins and dugongs in the surrounding waters.



ITINERARY

Days 0 - 1 - Darwin

- _ ****Pre Cruise Benefits**** _
- _ ****Private Executive Transfers**** _
- _ ****International flights - Economy class**** _
- _ ****or Business Class upgrade**** _
- _ ****Airport transfers**** _

Wild Earth Travel

Small Ships, Big Adventures

0800 945 3327 (within New Zealand) | +64 (0) 3 365 1355 | **1800 107 715** (within Australia)

info@wildearth-travel.com | **wildearth-travel.com**



Wild Earth Travel

Small Ships, Big Adventures

wildearth-travel.com

info@wildearth-travel.com

_ **Hotel** _

"Australia's capital of the north is a uniquely tropical city, and a historically isolated outpost of this vast, diverse country. Reaching up towards the equator, a full 2,000 miles from Sydney and Melbourne, the city was named in honour of Charles Darwin by the British settlers who established a frontier outpost here. With a unique history, beautiful islands nearby, and a palette of sizzling Pacific flavours, colourful Darwin is an enchanting and exotic Australian destination. Crocodiles patrol the jungled waterways and tropical rainforests around Australia's gateway to the Top End. Explore via airboat to look down on the veiny waterways of the mist-laced Kakadu National Park. The sounds of chattering birdlife and the gentle splash of fountains and waterfalls will fill your ears in George Brown Darwin Botanic Gardens. Soak it all in, before kicking back and relaxing with a picnic and a crackling barbecue. The sunshine and famous tropical pink sunsets mean many visitors naturally gravitate to the city's soft sands to relax at spots like pretty Mindil Beach, as evening approaches. The adjoining market is filled with souvenirs and crafts stands and is the perfect great place to enjoy some fiery Asian flavours. Stroll the stalls, grab some food, and crack open an ice-frosted beer as the sunset show begins. It may be remote, but Darwin found itself on the front line during the Pacific War, as the Japanese air force unloaded their bombs onto the city in 1942. This relaxed unassuming city has a deeply resilient backbone, however, and you can explore the museums to learn more of the war's impact on Darwin, as well as the devastating effects of one of Australia's worst natural disasters, Cyclone Tracy in 1973."

Day 2 - Koolama Bay

Koolama Bay is found at the mouth of the King George River. Named after the ship that had been beached here after a Japanese aerial attack during World War II, Koolama Bay is the starting point for a Zodiac cruise to reach the King George Falls, one of the Kimberley's most magnificent natural wonders. At 260 feet (80 m), the twin cascades are among the highest in Australia. Koolama Bay and the river weaving through an amazing landscape of near vertical red rock formations will offer a parade of wildlife --saltwater crocodiles and amazing birdlife, including giant raptors and the Brahminy Kite.

Day 3 - Vansittart Bay (Jar Island)

Vansittart Bay is located near the northern tip of Western Australia. The bay was named by Phillip Parker King during one of his four surveys of Northern

Australia during the early 19th century. Interesting parts of the bay include Jar Island and the opportunity to view Bradshaw (Gwion Gwion) and Wandjina styles of rock art. For these two different rock art styles there are two sites in close proximity. An area with an example of a more recent history is the Anjo Peninsula. A beach landing and a short hike across a lagoon or -depending on tides- a walk around the lagoon will lead to a World War II site. An almost intact wreck of an old airplane, a C-53, can be seen there.

Day 4 - Swift Bay

Australia's jaw dropping Kimberley region shelters some of the oldest collections of rock art. This ancestral art depicting warriors, animals or nature is an authentic testimony to Aboriginal's culture, rituals and traditions. Tranquil Swift Bay offers you the opportunity to discover astonishing Wandjina art galleries and wake up the adventurer in you. A quick zodiac ride on the turquoise water gives you a chance to admire the coast's spectacular scenery, while a short walk across the rocky and wild landscape - 250 meters from the landing site, leads you to the historic and artistic caves. In these ancient galleries, two different styles of rock art can be observed: the Gwion Gwion style, represented by long and skinny human-like figures and the much rounder Wandjina style. Both very impressive and special. You'll need to keep your wits about you if you want to admire the most spectacular of the ancient paintings though, as it is painted on the ceiling and only visible by lying down. However, those with claustrophobia beware! the ceiling is only about a metre above your head. Those who do wiggle in to be the best position will fully appreciate the artwork's enormous scale and size and surely won't be left indifferent.

Day 5 - Hunter River Region (Western Australia)

The Hunter River is home to an immense mangrove system surrounded by soaring red sandstone cliffs. Narrow mangrove channels shelter numerous bird species, mudskippers, fiddler crabs and the infamous saltwater crocodile; the most aggressive crocodile species known to man. Naturalist Island at the mouth of the river has a stunning stretch of sandy beach that makes a perfect landing site for small helicopters that can pick up visitors wishing to explore some of the Kimberley's vast interior. The highlight inland is the famous Mitchell Falls where four tiers of waterfalls plunge into deep pools that flow out into the mighty Mitchell River. The headwaters of the falls are cool and a dip in the fresh water is a welcome reprieve from the heat of the heartland.

Wild Earth Travel

Small Ships, Big Adventures

0800 945 3327 (within New Zealand) | +64 (0) 3 365 1355 | **1800 107 715** (within Australia)

info@wildearth-travel.com | **wildearth-travel.com**



Wild Earth Travel

Small Ships, Big Adventures

wildearth-travel.com

info@wildearth-travel.com

Day 6 - Ashmore Reef

Lost in the immensity of Indian Ocean and situated 630 km off Broome, Ashmore Reef Marine Park is an Australian External Territory that covers 583 square km. With its diverse shades of blue, its underwater wonders and feathery friends, this protected area is one of Australia's most beautiful natural treasures. The three tiny islands and their surrounding waters are home to an oasis of flourishing wildlife. Ashmore Reef is known to be the favourite place of more than 40 bird species. 100,000 seabirds breed there every year, including crested terns, white-tailed tropicbirds and greater frigatebirds. The islands are also a haven for thousands of migratory shorebirds like curlew sandpipers, bar-tailed godwits and great knots - some of them coming from very far places like Siberia! On the ocean side, the colourful reef is home to around 500 species of fish but also marine turtles, dugongs and many playful dolphins. Given the rich and fragile environment, Ashmore Reef has been declared a Sanctuary zone, providing the highest level of protection for the wildlife and minimising disturbance from human activities. Only scientific research is permitted but the visitors can access to the Recreational Use Zone, which includes a small area of the West Island, and thus discover this unique place.

Day 7 - Adele Island, Kimberley

Appearing like a charmed apparition, Adele Island is an oasis of tranquillity peeking out of the Indian Ocean. It's hard to capture the sense of quiet perfection as you stand on this sandy paradise, 65 miles away from Kimberley's rugged coast. The changeable sands of the island expand and contract with the contented sighs of the tides, and wide sandbanks ebb and flow with the whims of the water. At the core of Adele Island is a gorgeous tidal lagoon, rich in biodiversity. The island is a thriving ocean outpost for breeding birds and turtles, and the hospitable waters form a lively nursery for young humpback whales and bottlenose dolphins. Keep an eye out for large silhouettes sliding just below the shallow surface. The knee-deep sea here means you can easily spot wonderful sea creatures swimming agilely past. Keep your wits about you though, there may also be beady-eyed crocodiles, slaloming menacingly. Encounter beautiful sea turtles, diverse fish life, and remarkable birds like the lesser frigate bird and brown booby, all while exploring this pristine island gem. Stand in awe as plumes of seabirds rotate around you like a gentle whirlwind. Endless fields of immaculate coral reefs coat the seabed, alive like underwater cities, bustling with life and characters. With only the sounds of rhythmic waves sloshing, sandy footsteps crunching and vocal bird life singing out, melodic Adele Island hits all the right notes.

Day 8 - Montgomery Reef

Montgomery Reef, which is some 300 square kilometres in size, can show an amazing tidal change of up to 4 metres. When the tide drops, the reef seems to rise out of the water. At low tide a river is exposed that allows access to an amazing semi-submerged world. When the tide continues to ebb, Zodiacs will be used to make the way to the edge of the reef where one is surrounded by cascading waterfalls up to 3 metres high. Continuing up the river one is able to look at the abundance of reef birds and sea creatures including turtles and manta rays. A visit to Montgomery Reef is very much tide-dependent, but truly a once in a lifetime experience.

Day 8 - Freshwater Cove, Kimberley, Western Australia

Adjacent to Montgomery Reef, but on the mainland, Freshwater Cove - locally known as Wijingarra Butt Butt. Aboriginal guides will welcome guests with a traditional ochre welcome on the beach. The rock formations that can be seen along the shore represent spiritual ancestors relating to the great Wandjina battle. Caves with rock art are found in the vicinity, but can only be visited with local guides.

Day 9 - Talbot Bay

Talbot Bay is famous for the Horizontal Falls which have been described as "one of the greatest natural wonders of the world". Nicknamed the "Horries" and known as Garaangaddim by the local Indigenous people, are an unusual natural phenomenon on the coast of the Kimberley region in Western Australia. The region's tides of close to 36 feet create an amazing spectacle when the water tries to enter or leave Poulton Creek through two very narrow openings located one behind the other in the McLarty Ranges. Water builds up faster on one side than it can flow through the gaps, leaving or entering depending on the tide. This incredible tidal power can be experienced when zodiac cruising around the Horizontal Falls.

Day 10 - Lacepedes Islands

Declared an A-class nature reserve in 1970, the Lacapede Islands are a little paradise for bird lovers. Its brown booby colony, possibly the largest on the



Wild Earth Travel

Small Ships, Big Adventures

wildearth-travel.com

info@wildearth-travel.com

planet, awaits you with a joyful cacophony. Even if located just off the impressive Kimberley Coast, an expedition to the Lacepedes feels like discovering a wild and remote place. If some might call them 'Australia's Galapagos', they were actually named after French naturalist Bernard Germain de Lacepede, who studied many Australian fish species. Before becoming a protected natural reserve, the Lacepedes also witnessed bleak moments - the islands used to be the place where kidnapped Aborigines were held before being sent to work in the pearl industry. Their unique location makes the Lacepedes an important breeding centre for many birds and marine life species. Masked Boobies, Australian Pelicans, Lesser Frigate Birds but also the endangered Green Turtle populate the islands. Our Zodiac excursions are the most ideal way to admire the ballet of birds flying in this stunning West Australian scenery. Nature lovers or not, prepare to be amazed.

Days 11 - 12 - Dampier Archipelago

Rust coloured rocks contrasting with pale Spinifex grass, white beaches and aquamarine seas create a scenic kaleidoscope in the Dampier Archipelago. Forty-two islands lie around the similarly coloured Burrup Peninsula. The archipelago is named after William Dampier, the English pirate turned explorer, who was the first European visitor in 1699. But the occupation of the area is ancient. The archipelago and peninsula are known as Murujuga by the Aboriginal people. Clearly recognisable are animals and people, while mythical beings and geometric patterns require more interpretation. The Dampier Marine Park protects the archipelago's coral reefs, sponge gardens and seagrass meadows. A five-metre tidal range adds rocky shores and sand flats to this list of habitats. A high biodiversity of corals and fish are matched by 1200 molluscs. Four turtle species live in these waters including Flatback and Hawksbill Turtles. Snorkelling here reveals a rich sample of this treasure trove of life. Flora and fauna on the arid rocky islands require good adaptations. Reptiles and the shy Rothschild's Rock Wallaby escape the midday sun in rocky overhangs. Much of the birdlife, like Ospreys and Sea-eagles, rely on the sea for food. Look for their huge stick nests on seaside rocks. Some nests are decades old, an easier time span to grasp.

Day 13 - Montebello Islands

Montebello is Italian for 'beautiful mountain'. What a misnomer! The islands are low, flat and arid. They were named by French Explorer Nicolas Baudin in 1801 after a battle in Italy. The war-like name may suit, as the British used the islands for three nuclear bomb tests in the 1950s. Today visitors must avoid two radioactive islands. Other islands are okay to explore. Two endangered

mammals--the Mala (Rufous Hare-Wallaby) and the Djoongari (Shark Bay Mouse)-- thrive here. They were almost wiped out by introduced cats and foxes on the mainland and were brought to this island ark for safety. The 170 islands are 120 kilometres (75 miles) off mainland Australia. Aboriginal people visited until eight thousand years ago, when rising sea levels after the last ice age made them too far offshore to reach. The next visitors were in 1622 when survivors of the wrecked British ship Tryall reached the arid islands. Porcupine Grass or Spinifex grows on rocky areas while wattle shrubs favour sand. The islands are an important seabird breeding colony. Look for Roseate and Greater Crested Terns. Sooty Oystercatchers forage on the rocks while Beach Stone-curlews roam beaches. Coral reefs and lagoons surround the islands in the Montebello Marine Park. One hundred and fifty species of hard coral, 450 species of fish and 170 species of echinoderms (sea stars, sea urchins and sea cucumbers) keep snorkellers happy. Green, Hawksbill and Flatback Turtles nest on beaches and provide highlights when seen in the water.

Day 14 - North Muiron Island

A spectacular collision of colour spills across the seabed around North Muiron Island - which has to be one of the best spots in the world for snorkelling and scuba diving. Immerse yourself in this underwater universe as tiny fish flit between the corals, and elegant rays sweep gracefully past. Sitting off the North West Cape, the two utterly unspoiled Muiron Islands are part of the UNESCO World Heritage Site listed Ningaloo Coast. Warm Indian Ocean waters collide with the cooler waters of the West Australian Current here, forming a remarkable biological hot spot that thrives with rich life and incredible diversity. These unique conditions form masses of plankton for gentle giants of the ocean to graze upon - even luring groups of the ocean's biggest fish - colossal whale sharks. From March to July, the cows of the sea carefully vacuum the sea bed for their food. Other massive mammals, like dugongs, dolphins, and pilot whales, also drop in throughout the year. Snorkel to look into the riot of activity below the undulating waves. Spot turtles, parrotfish and butterfly fish among the thousands of species at home in these balmy waters. A true Gem of Western Australia's Coral Coast, the remarkable reefs of North Muiron Island serve up a brilliant banquet of colour and curiosity.

Day 15 - Cape Peron, Shark Bay

Shark Bay is Australia's largest bay, with a beach stretching over 1,000 kilometers. François Peron National Park lies within the Shark Bay World Heritage area and adjacent to the Shark Bay Marine Park. This is where the



Wild Earth Travel

Small Ships, Big Adventures

wildearth-travel.com

info@wildearth-travel.com

rust-red desert sand meets the dazzling white-sand beach and the azure waters of the sea. At the northerly tip of the national park is Cape Peron, sitting at the confluence of two major currents, the cape attracts an impressive array of marine life. Take a hike with the expedition team from Cape Peron to the Skipjack Point viewing platforms, perched on the cliff edge with views out across the marine park. Alternatively, join the expedition team for an interpretive nature walk through the impressive landscape of acacia-cloaked red dunes and arid shrublands surrounded by turquoise water with views over the coastline.

Days 16 - 17 - Abrolhos Islands

Human drama and nature rival each other to be the most fascinating drawcards of the Houtman Abrolhos or Abrolhos Islands. In 1629 the Dutch ship Batavia was wrecked, with most crew and passengers reaching dry inhospitable Beacon Island. Thus, began a horror story of mutiny, betrayal, rape, murder of children and survival. On one island, soldiers built a stone stockade which is the first European structure in Australia. Eventually the remaining survivors were rescued, and the murderers were hung on one island or marooned on the mainland (Australia's first European settlers). A century later, desperate survivors of another wrecked Dutch ship Zeewijk lived (or died) for ten months on the islands. Life in the sea is an unusual mix. The warm southward-flowing Leeuwin Current meets cool southern waters at Abrolhos creating homes for both tropical and temperate marine life. A diverse coral reef grows beside cool water algae. Two thirds of the 400 fish species are tropical, while cool water-favouring Australian Sea-lions and Western Rock Lobsters (Australia's most valuable fishery) are close to their northern limit. Seabirds, like the cooler climate Pacific Gulls, mix with tropical species like Bridled and Roseate Terns. The only colony of the Australian Lesser Noddy breeds here, along with two million Wedge-tailed Shearwaters. On land, amongst the Nitre shrubs and Saltbushes, are Abrolhos Painted Quails and Dwarf Bearded Dragons and shy Tammar Wallabies. Their ancestors survived the hungry castaways.

Day 18 - Fremantle (Perth), Western Australia

Coming in at number seven on Lonely Planet's list of best places to live, Fremantle has finally begun to shake off the shadow of neighbouring big brother Perth. With just 20 kilometres separating the two cities, Perth, with its happy hippie vibe has long been the big pull for visitors to the region. But Fremantle's colourful past and bright future gives Perth as good as it gets. The coastal city has undergone a complete revamp since the America's Cup thrust

Fremantle into the spotlight in 1987. Over AUS\$ 1,3 billion has been poured into revamping the city, and the fruits of the city's labour are ripe for picking. Investment in the arts has brought Fremantle to the fore of thriving urban culture, while generous grants for small businesses has led to groovy live-music rooms, hipster bars, boutique hotels, left-field bookshops, craft-beer breweries, Indian Ocean seafood shacks amid the buskers and beaches. If that doesn't not sound like your glass of beer, we guarantee a stroll along the wooden riverside walkway will change your mind. The city also enjoys another, rather different status. Fremantle was one of Australia's penal cities, vestiges of which can still be found in Fremantle Prison. Almost 10,000 convicts were condemned to life imprisonment here between 1850 and 1868, but the prison remained in use until 1991. Today, the memorable sandstone building is a UNESCO World Heritage Site and at just 15 minutes from port is well worth a visit. Just don't forget your get out of jail free card.

Day 19 - Post Cruise

_ ****Post Cruise Benefits**** _
_ ****Airport transfers**** _
_ ****International flights - Economy class**** _
_ ****or Business Class upgrade**** _
_ ****Private Executive Transfers**** _

Wild Earth Travel

Small Ships, Big Adventures

0800 945 3327 (within New Zealand) | +64 (0) 3 365 1355 | **1800 107 715** (within Australia)

info@wildearth-travel.com | **wildearth-travel.com**

Wild Earth Travel

Small Ships, Big Adventures

wildearth-travel.com

info@wildearth-travel.com

YOUR SHIP: SILVER CLOUD

YOUR SHIP:	Silver Cloud
VESSEL TYPE:	Luxury Expedition
LENGTH:	157 m
PASSENGER CAPACITY:	200/260
BUILT/REFURBISHED:	1994 Refurbished & Rebranded

After extensive refurbishment, _Silver Cloud_ will be the most spacious and comfortable ice class vessel in expedition cruising. Her large suites, her destination itineraries and her unparalleled service make her truly special. Her five dining options will tantalise your taste buds and as 80% of her suites include a veranda, watching a breaching whale or a few cavorting penguins has never been so personal. Broad sweeping decks with multiple open spaces and a swimming pool complete what is surely the most distinctive expedition ship sailing today.

A limited number of guests, particularly with just 200 in polar waters, mean that _Silver Cloud_ has the highest space to guest and crew to guest ratios in expedition cruising. With her 18 zodiacs, possibilities are almost limitless with ship-wide simultaneous explorations. Finally, a team of 19 passionate and dedicated experts are always at hand to ensure your voyage is enhanced every step of the way.

DECK 09 - Observation Lounge, Jogging Track

DECK 08 - Pool, Pool Bar, Hot Rocks, The Panorama Lounge, The Connoisseur's Corner

DECK 07 - La Terrazza, The Spa at Silversea, Beauty Salon, The Library

DECK 06 - Lecture Theatre, The Fitness Centre, Reception/Guest Relations, Expedition Desk

DECK 05 - The Bar, Boutique, Casino

DECK 04 - Main Restaurant, Le Champagne, Launderette



Launderette

Wild Earth Travel

Small Ships, Big Adventures

0800 945 3327 (within New Zealand) | +64 (0) 3 365 1355 | **1800 107 715** (within Australia)

info@wildearth-travel.com | wildearth-travel.com

Wild Earth Travel

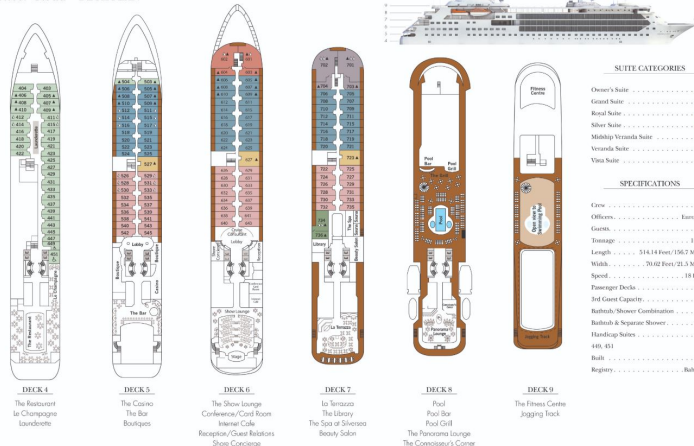
Small Ships, Big Adventures

wildearth-travel.com

info@wildearth-travel.com

INSIDE YOUR SHIP

Silver Cloud - DECK PLAN



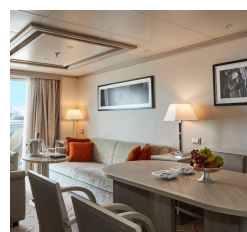
Grand 1 Bedroom



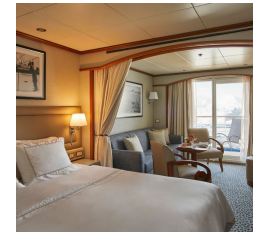
Grand 2 Bedroom



Medallion



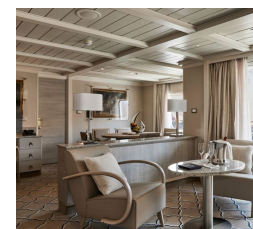
Midship Veranda



Owner 1 Bedroom



Owner 2 Bedroom



Wild Earth Travel

Small Ships, Big Adventures

wildearth-travel.com

info@wildearth-travel.com

PRICING

02-Aug-2025 to 20-Aug-2025

Vista	34500 AUD pp
Veranda	40500 AUD pp
Midship Veranda	45500 AUD pp
Royal 2 Bedroom	110600 AUD pp
Medallion	64700 AUD pp
Silver	67000 AUD pp
Grand 2 Bedroom	113700 AUD pp
Owner 2 Bedroom	113800 AUD pp
Royal 1 Bedroom	74100 AUD pp
Grand 1 Bedroom	77200 AUD pp
Owner 1 Bedroom	82700 AUD pp

Vista	31600 AUD pp
Veranda	36100 AUD pp
Midship Veranda	40500 AUD pp
Medallion	43000 AUD pp
Silver	46200 AUD pp
Royal 1 Bedroom	54000 AUD pp
Royal 2 Bedroom	86500 AUD pp
Grand 1 Bedroom	64900 AUD pp
Grand 2 Bedroom	97400 AUD pp
Owner 2 Bedroom	100300 AUD pp
Owner 1 Bedroom	71900 AUD pp

19-Aug-2025 to 06-Sep-2025

Vista	35400 AUD pp
Veranda	42600 AUD pp
Midship Veranda	50800 AUD pp
Royal 2 Bedroom	113900 AUD pp
Medallion	66000 AUD pp
Grand 2 Bedroom	121000 AUD pp
Owner 2 Bedroom	118500 AUD pp
Silver	68600 AUD pp
Royal 1 Bedroom	75600 AUD pp
Grand 1 Bedroom	82700 AUD pp
Owner 1 Bedroom	86600 AUD pp

02-Aug-2026 to 20-Aug-2026



0800 945 3327 (within New Zealand) | +64 (0) 3 365 1355 | **1800 107 715** (within Australia)

info@wildearth-travel.com | wildearth-travel.com

Wild Earth Travel

Small Ships, Big Adventures

wildearth-travel.com

info@wildearth-travel.com

PRICING

19-Aug-2026 to 06-Sep-2026

Vista	31900 AUD pp
Veranda	36500 AUD pp
Midship Veranda	41200 AUD pp
Medallion	44100 AUD pp
Silver	47200 AUD pp
Royal 1 Bedroom	55100 AUD pp
Royal 2 Bedroom	88000 AUD pp
Grand 2 Bedroom	98900 AUD pp
Owner 2 Bedroom	102500 AUD pp
Grand 1 Bedroom	66000 AUD pp
Owner 1 Bedroom	73800 AUD pp

Wild Earth Travel
Small Ships, Big Adventures

0800 945 3327 (within New Zealand) | +64 (0) 3 365 1355 | **1800 107 715** (within Australia)

info@wildearth-travel.com | **wildearth-travel.com**