

Wild Earth Travel

Small Ships, Big Adventures

wildearth-travel.com

info@wildearth-travel.com

17 DAYS LUXURY AUSTRALIA CRUISE - FREMANTLE TO MELBOURNE

A true Aussie adventure - explore the spectacular southern coastline and Tasmania in style. Join us as we sail from Perth's remote paradise to Melbourne's artsy waterside hub. Meet the continent's famous wildlife, admire sweeping beaches, and wander cities dense with museums, artsy appeal and indigenous culture. Hop between white sand beaches and spectacular coastlines, before spending time beneath the beautiful backdrop of Mount Wellington in Tasmania.



ITINERARY

Day 1 - Fremantle (Perth), Western Australia

Coming in at number seven on Lonely Planet's list of best places to live, Fremantle has finally begun to shake off the shadow of neighbouring big brother Perth. With just 20 kilometres separating the two cities, Perth, with its happy hippie vibe has long been the big pull for visitors to the region. But Fremantle's colourful past and bright future gives Perth as good as it gets. The coastal city has undergone a complete revamp since the America's Cup thrust Fremantle into the spotlight in 1987. Over AUS\$ 1,3 billion has been poured into revamping the city, and the fruits of the city's labour are ripe for picking.

Wild Earth Travel

Small Ships, Big Adventures

0800 945 3327 (within New Zealand) | +64 (0) 3 365 1355 | **1800 107 715** (within Australia)

info@wildearth-travel.com | **wildearth-travel.com**



Wild Earth Travel

Small Ships, Big Adventures

wildearth-travel.com

info@wildearth-travel.com

Investment in the arts has brought Fremantle to the fore of thriving urban culture, while generous grants for small businesses has led to groovy live-music rooms, hipster bars, boutique hotels, left-field bookshops, craft-beer breweries, Indian Ocean seafood shacks amid the buskers and beaches. If that doesn't not sound like your glass of beer, we guarantee a stroll along the wooden riverside walkway will change your mind. The city also enjoys another, rather different status. Fremantle was one of Australia's penal cities, vestiges of which can still be found in Fremantle Prison. Almost 10,000 convicts were condemned to life imprisonment here between 1850 and 1868, but the prison remained in use until 1991. Today, the memorable sandstone building is a UNESCO World Heritage Site and at just 15 minutes from port is well worth a visit. Just don't forget your get out of jail free card.

Day 2 - Busselton

Bordering the Indian Ocean, Geopraphe Bay's Busselton has a Mediterranean style climate. The region features national parks, towering forests, caves, historic lighthouses and some of the best surfing beaches in the country. Other attractions include wineries and micro-breweries in the Margaret River wine region to the south. Busselton's iconic jetty -at over 1.8 km the longest wooden jetty in the southern hemisphere- has an 'Underwater Observatory' that descends 8 meters to the ocean floor via a spiral staircase to see tropical and sub-tropical corals, sponges, fish and invertebrates.

Day 3 - Day at sea

Days at sea are the perfect opportunity to relax, unwind and catch up with what you've been meaning to do. So whether that is going to the gym, visiting the spa, whale watching, catching up on your reading or simply topping up your tan, these blue sea days are the perfect balance to busy days spent exploring shore side.

Day 4 - Albany (Western Australia)

At 400 kilometres southeast of Perth, Albany is often overlooked in favour of the bigger city. This is of course a mistake as Albany and its gorgeous surrounding region have much to offer. The city is the oldest settlement in Western Australia, beating Perth and Fremantle by over two years (Albany was founded in late 1826, the others in June 1829). At the time of its foundation, the city was used as a military outpost as part of a plan to a

prevent invasion, particularly by the French who had taken a shine to the region. With its excellent - and unusually deep - harbour, Albany was seen as the jewel of Western Australia and there are reminders of the city's colonial past all over the city. The arrival of Europeans in the region led to Albany becoming a major player in the whaling industry. This only ceased in 1978 and the Historic Whaling Station, a museum dedicated to the city's industrious past, now honours the good, the bad and the ugly aspects of a business that once supported an entire community. If that does not sound like your cup of tea, then do not miss a trip to the Princess Royal Fortress Military Museum for a glimpse of Albany's ANZAC History at the excellent National ANZAC Centre. However, like much of Australia's west coast, the real beauty of Albany lies in Mother Nature. Walk to the top of Mount Clarence and view the magnificent King George Sound from above or take a stroll along the coastal path and enjoy vistas of some of Australia's most rugged and spectacular scenery.

Day 5 - Esperance

Esperance and the Recherche Archipelago sheltering Esperance Bay received their name in 1792, when a French expedition under d'Entrecasteaux looked for shelter from a storm. Ten years later Matthew Flinders took refuge at Lucky Bay, some 30 kilometers southeast of Esperance near Cape Le Grand, another feature named during the French visit. It was not until the 1860s that settlement began and by the 1890s Esperance was known as the "Gateway to the Goldfields" further inland. Today some 12,000 residents live in Esperance. The town is southeast Western Australia's only port and as such quite important for grain and mineral exports. Tourism is a major factor as Esperance and its surrounding area have such unusual attractions as a museum featuring debris from Skylab's 1979 return to earth, a full-size replica of Stonehenge, the Pink Lake -which formerly used to be pink- an IBA for Hooded Plovers and Banded Stilts, several national parks and some of the whitest beaches in Australia. Lucky Bay is one of the iconic places, as kangaroos are regularly seen on the beach sunbathing.

Days 6 - 7 - Day at sea

Days at sea are the perfect opportunity to relax, unwind and catch up with what you've been meaning to do. So whether that is going to the gym, visiting the spa, whale watching, catching up on your reading or simply topping up your tan, these blue sea days are the perfect balance to busy days spent exploring shore side.



Wild Earth Travel

Small Ships, Big Adventures

wildearth-travel.com

info@wildearth-travel.com

Day 8 - Port Lincoln

Known as the seafood capital of Australia, Port Lincoln is a foodie paradise. Home to Australia's largest fishing fleet, numerous seafood restaurants and a prized local wine region, this is one destination where it pays to travel with your taste buds. The city's traditional name in Barngala is 'Kallinyalla' (pronounced Galinyalla), literally translating as 'sweet waters'. That should give you some indication of how seriously the ocean is taken in these parts - it provides employment, entertainment and experiences that are just unseen in other parts of the country. Add in contrasting coastal landscape that ranges from quiet coves to surf happy beaches to rugged oceanic coastline, and you'll soon see why Port Lincoln is fast becoming one of Australia's favourite places. The city is located on the lower Eyre Peninsula, on the shore of Boston Bay. Discovered by Matthew Flinders in 1802, Port Lincoln was once under consideration to become the state's capital. However, a lack of freshwater mired that idea, forcing settlers to look 280 kilometres east, to Adelaide. While European discovery is fairly recent, historians should note that the region had been inhabited by Aboriginal groups including the Nauo (south-western Eyre), Barngarla (eastern Eyre), Wirangu (north-western Eyre) and Mirning (far-western Eyre) for over 40,000 years. For those who want to look beyond the city boundaries, Port Lincoln is home to some extremely diverse and abundant nature, and a trip to the National Park is well worth it.

Days 9 - 10 - Adelaide

For those of you that might think that Adelaide lacks behind its coastal counterparts in terms of culture and creativity, think again. Adelaide is a thriving urban city with bright, leafy alleys that beg to be explored. The city's labyrinthine lanes and alleys are bursting with bars and eateries, serving everything from local craft beer to a modern Australian cuisine. Uber aware of their carbon footprint, Adelaideans like to keep things close to home, so expect lots of local produce which is abundant, fresh and delicious. Unsurprisingly, Barossa wine from the neighbouring valley features prominently on wine lists everywhere. Naturally, a lot of life centres around the lovely beaches, which are home to surfers, sheltered waters and wide boulevards. The coast is blessed with acres of parkland, perfect for lazing the afternoon away. Many of Australia's most beautiful (and historic) buildings can be found within the boundaries of the city including the handsomely-restored former Railway Building, numerous stately Colonial buildings, St. Peter's Cathedral, the grand old Parliament Buildings and nearby Government House, which all make a worthy addition to any visit. Adelaide is of course known for its wide diversity of faiths, and as such carries its nickname "the city of churches" with pride.

Contrary to other Australian penal settlements, Adelaide was a free settlement. This meant that it was also a state free from religious persecution, leading rise to the construction of many churches.

Day 11 - Kangaroo Island

Kangaroo Island is with 1,740 square miles the third largest island off the coast of Australia. It is 96 miles long and 34 miles wide, and known for its outstanding natural beauty. Due to its remote location, Kangaroo Island was less affected than the mainland by the impact of European development. To this day, the island is rich in diverse flora and fauna seldom found elsewhere. As one of the world's last unspoiled wilderness places, about 30 percent of the island has been designated as National Parks. The most important one is Flinders Chase at the western end of Kangaroo Island, with Seal Bay Conservation Park following close behind. Its large sandy beach and dune area is home to Australian sea lions where they come to rest and nurse their young. Kingscote, formerly known as Queenscliffe, is the largest town on the island and its main supply depot. Tourism is a significant element in the local economy. A mix of attractive small townships, wildlife sanctuaries and fascinating wilderness areas guarantee a steady stream of visitors each year.

Day 12 - Robe

Located halfway between Adelaide and Melbourne, along the beautiful Limestone Coast in South Australia, lies Robe--a town of endless beaches, laid-back fishing-village charm, and tempting local seafood. As the name suggests, there's no shortage of space to unwind on Long Beach. A thick band of white sand stretches luxuriously for almost ten miles beside the breathtaking blue ocean. Kick back and relax, or wander beside surfers, flicking fishing lines, and makeshift beach cricket games. Head over to the cherry and white-painted Robe Obelisk landmark--which stands out on Cape Dombey--to soak in picturesque coastal views. The streets of Robe are marked with a heritage trail of historic buildings and cottages; spot the litany of blue plaques that reveal Robe's stories. Refuel by sampling cafes producing velvety flat whites, or tucking into freshly gathered rock lobster, while exploring Victoria Street's establishments. Prior to the arrival of the Europeans, the area was home to Bunganditj and Meintangk peoples. Dig deeper to learn more about their heritage, and the gold rush history that drew more than 15,000 Chinese migrants to these shores in the 1800s.

Day 13 - Day at sea



Wild Earth Travel
Small Ships, Big Adventures

0800 945 3327 (within New Zealand) | +64 (0) 3 365 1355 | **1800 107 715** (within Australia)

info@wildearth-travel.com | **wildearth-travel.com**



Wild Earth Travel

Small Ships, Big Adventures

wildearth-travel.com

info@wildearth-travel.com

Days at sea are the perfect opportunity to relax, unwind and catch up with what you've been meaning to do. So whether that is going to the gym, visiting the spa, whale watching, catching up on your reading or simply topping up your tan, these blue sea days are the perfect balance to busy days spent exploring shore side.

Days 14 - 15 - Hobart, Tasmania

Mount Wellington's looming, cloud-wisped form is an ever-present sight as you explore booming Hobart, the cosmopolitan capital of Australia's most southerly state. A former British penal colony, nowadays Australia's second-oldest city is a place to live the free and easy life. Encircled by dramatic cliffs, landscaped gardens and rolling vineyards, Hobart is also well stacked with cultural pursuits including museums, and respected - if controversial - galleries plastering new and old art to their walls. With fresh sea breezes and a fabulous location, Hobart is a creative place, where you can browse the produce of local artisans in Saturday's massive Salamanca Market - which draws visitors from all across Tasmania and beyond. Eat at waterfront restaurants, or rise up Mount Wellington's slopes to appreciate the remoteness of Hobart's location. From this elevated platform, you can look down across views of flowing forests, undulating mountains and endless ocean swallowing up the city. Further away, animal sanctuaries introduce you to the island's famous inhabitants, including the famous Tasmanian devil. Thirsty? Hobart has a long brewing tradition - so enjoy a refreshing ale poured from the country's oldest brewery. The climate's blend of generous sunshine and cool Antarctic breezes helps Hobart to produce its acclaimed wines, and thick clumps of pinot noir grapes hang from vineyards dotted along the valleys nearby. Taste the wines, accompanied by a platter of artisan cheese and sausage. Whiskey aficionados aren't left in the cold either, with international award-winning distilleries close by.

Day 16 - Day at sea

Days at sea are the perfect opportunity to relax, unwind and catch up with what you've been meaning to do. So whether that is going to the gym, visiting the spa, whale watching, catching up on your reading or simply topping up your tan, these blue sea days are the perfect balance to busy days spent exploring shore side.

Day 17 - Melbourne

Australia's metropolitan cultural capital is a refined, contemporary and richly liveable city - which has a blend for every taste. The smells of freshly ground, artisan coffees fill the streets of this hip, youthful city, which is generously sprinkled with fine dining establishments, art galleries, and absorbing museums. With an airy outdoor lifestyle, Melbourne is a vibrant global hub of fashion, fun and festivities. Multicultural and diverse, Victoria's capital is crisscrossed by narrow alleys and splashed with street art. It's fair to say Melbourne's bearded baristas take their coffees seriously. Settle in to sample the unique coffee culture that is an essential part of Melbourne life. Looking for something a little stronger? The city's rooftop bars come alive with clinking cocktails as the sun sets. A world leader in culinary arts, take your seat at award-winning restaurants, and sample world foods alongside delicious wines, cultivated in the vineyards of the surrounding valleys. Savour a glass while cruising the arching Yarra River, for an unbeatable introduction to Melbourne. An outdoor city, it's no surprise that Melbourne is one of Australia's sporting giants. The vast bowl of Melbourne Cricket Ground serves as the city's sporting cathedral - squeezing in over 100,000 fans and hosting various sports on its hallowed, oval turf. Whether it's the rumble of hoofs during the Melbourne Cup, revs of engines during the Formula One, or thwacks of tennis balls during the Australian Open - few places can boast such a comprehensive list of high-profile sporting appeals.

Please note:

Itineraries are subject to change.

Wild Earth Travel

Small Ships, Big Adventures

wildearth-travel.com

info@wildearth-travel.com

YOUR SHIP: SILVER NOVA

YOUR SHIP:	Silver Nova
VESSEL TYPE:	Luxury Cruise
LENGTH:	801 Feet / 244.2 Meters
PASSENGER CAPACITY:	728
BUILT/REFURBISHED:	2022/2023

Silver Nova is more than a new ship by Silversea, it is a Nova way of luxury travel.

Introducing Silver Nova - the twelfth ship to join our fleet. Our newest vessel will join us in summer 2023, and will be a home away from home for up to 728 guests. Silver Nova's innovative asymmetrical design introduces the world like never before, offering an immersive destination experience to our guests. With a gross tonnage of 54,700 tons she will offer a space-to-guest ratio of 75 GRT-per-passenger becoming one of the most spacious cruise ships ever built. What's more, Silver Nova will be our most environmentally friendly, and thanks to her groundbreaking technological solutions, she will propel Silversea into a new era of sustainable cruising. It's the Nova way to travel.

S.A.L.T. Chef's Table - An intimate dining experience with a curated tasting menu highlighting regional flavors. Includes wine & cocktail pairing. Reservation fee: \$180.

S.A.L.T. Kitchen - Destination-inspired menus featuring local flavors. The Terrain menu showcases the current port, while the Voyage menu offers highlights from the journey.

Atlantide - Classic fine dining with a sophisticated ambiance.

Indulge in premium ingredients like caviar, lobster, and exquisite desserts.

La Terrazza - Authentic Italian cuisine with homemade pasta, antipasto, risotto, and bold regional wines. Enjoy stunning views from the outdoor terrace.

La Dame - French fine dining with curated tasting menus and wine pairings. Reservation fee: \$160.

Kaiseki - Japanese culinary artistry with sake, whiskey, or tea pairings. Reservation fee: \$80.

Silver Note - A lively venue with gourmet tapas, jazz, and soul music, perfect for a night of entertainment.

The Grill - Casual dining by day, transforming into the "Hot Rocks" BBQ experience at night, set in The Marquee.

Spaccanapoli - Thin, freshly made pizzas from Naples, served in an open-air setting at The Marquee.

The Pool Deck - Spacious sun deck with Silversea's largest pool and an infinity-edge whirlpool for ultimate relaxation.

The Dusk Bar - Open-air sky bar offering panoramic views and destination-inspired cocktails.

The Marquee - A relaxed outdoor venue combining The Grill and Spaccanapoli for casual dining.

Arts Cafe - A cultural hub for light bites, fresh juices, coffee, and artistic inspiration.

S.A.L.T. Bar - Locally inspired cocktails reflecting each destination.

S.A.L.T. Lab - Hands-on culinary workshops exploring local food culture.

The Shelter - An elegant cocktail bar offering signature drinks in an intimate setting.

Wild Earth Travel

Small Ships, Big Adventures

0800 945 3327 (within New Zealand) | +64 (0) 3 365 1355 | **1800 107 715** (within Australia)

info@wildearth-travel.com | wildearth-travel.com

Wild Earth Travel

Small Ships, Big Adventures

wildearth-travel.com

info@wildearth-travel.com

Dolce Vita - The ship's social hub, featuring live piano music and expertly crafted cocktails.

Panorama Lounge - A versatile space for relaxing by day and live music or DJ sets at night.

Connoisseur 's Corner - A stylish cigar lounge with premium selections.

Observation Lounge - A peaceful retreat with panoramic sea views and an in-house library.

The Venetian Lounge - A grand theatre for live performances and film screenings.

Atrium - The heart of the ship, home to key services, The Shelter, and Arts Cafe, with stunning floor-to-ceiling windows.

Boutique - Luxury shopping at sea, featuring premium brands and exclusive collections.



ollections.

Wild Earth Travel

Small Ships, Big Adventures

0800 945 3327 (within New Zealand) | +64 (0) 3 365 1355 | **1800 107 715** (within Australia)

info@wildearth-travel.com | **wildearth-travel.com**

Wild Earth Travel

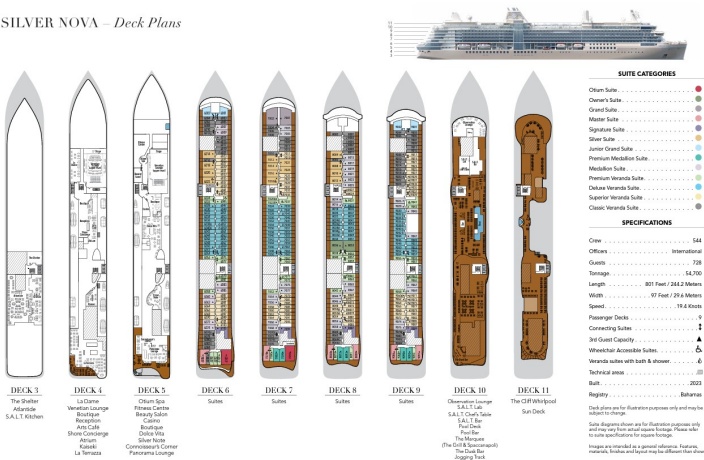
Small Ships, Big Adventures

wildearth-travel.com

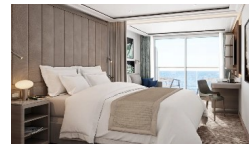
info@wildearth-travel.com

INSIDE YOUR SHIP

SILVER NOVA – Deck Plans



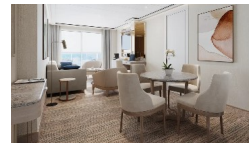
Classic Veranda



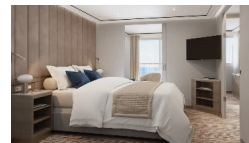
Grand 1 Bedroom



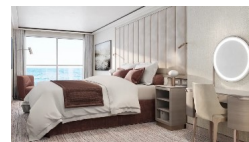
Junior Grand 2 Bedroom



Medallion



Owner 1 Bedroom



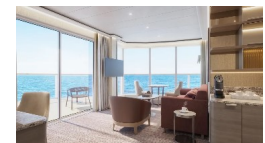
Deluxe Veranda



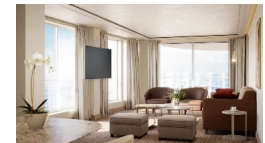
Junior Grand 1 Bedroom



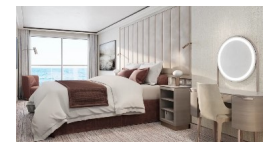
Master



Otium



Owner 2 Bedroom



Wild Earth Travel

Small Ships, Big Adventures

0800 945 3327 (within New Zealand) | +64 (0) 3 365 1355 | 1800 107 715 (within Australia)

info@wildearth-travel.com | wildearth-travel.com

Wild Earth Travel

Small Ships, Big Adventures

wildearth-travel.com

info@wildearth-travel.com

PRICING

14-Nov-2025 to 30-Nov-2025

Classic Veranda	15400 AUD pp
Superior Veranda	16300 AUD pp
Deluxe Veranda	17200 AUD pp
Premium Veranda	17900 AUD pp
Medallion	26300 AUD pp
Premium Medallion	29500 AUD pp
Junior Grand 1 Bedroom	31500 AUD pp
Silver	33600 AUD pp
Signature	43900 AUD pp
Master	46100 AUD pp
Junior Grand 2 Bedroom	45400 AUD pp
Grand 1 Bedroom	47700 AUD pp
Owner 1 Bedroom	59800 AUD pp
Otium	65700 AUD pp
Owner 2 Bedroom	75900 AUD pp