

# Wild Earth Travel

*Small Ships, Big Adventures*

**wildearth-travel.com**

**info@wildearth-travel.com**

## 17 DAYS LUXURY TRANSATLANTIC CRUISE - MIAMI TO LISBON

Cross the Atlantic in unparalleled Silversea style. Spend 14 days experiencing the next generation of luxury at sea aboard the boundary-pushing Silver Nova. Every sea day offers the perfect opportunity to slip into a deeper state of relaxation. First, we'll explore Tenerife's turquoise waters, followed by adventures among the fertile greenery and pristine beaches of Madeira, as we gradually approach a charming and colourful conclusion in Lisbon.



### ITINERARY

Days 0 - 1 - Pre Cruise & Miami, FL

- \_ **\*\*Pre Cruise Benefits\*\*** \_
- \_ **\*\*Private Executive Transfers\*\*** \_
- \_ **\*\*International flights - Economy class\*\*** \_
- \_ **\*\*or Business Class upgrade\*\*** \_
- \_ **\*\*Airport transfers\*\*** \_
- \_ **\*\*Hotel\*\*** \_

Wild Earth Travel

*Small Ships, Big Adventures*

**0800 945 3327** (within New Zealand) | +64 (0) 3 365 1355 | **1800 107 715** (within Australia)

info@wildearth-travel.com | **wildearth-travel.com**



# Wild Earth Travel

*Small Ships, Big Adventures*

**wildearth-travel.com**

**info@wildearth-travel.com**

Life is that little bit more beautiful in Miami. Sparkling speed boats zip along cresting blue waves, sculpted sun-worshippers whizz by on pink roller skates, and mojito glasses clink all along the fabulous, palm-lined Miami Beach. The world's most popular cruise port tops the list for good reason. Florida's unabashed vacation capital is the place to kick back, be unashamedly yourself, and soak up the sun while you strut. Miami boasts no fewer than 35 miles of white sand to spread out along and enjoy and offers an endless litany of leisure activities - whether you want to dance the salsa or club golf balls along immaculate fairways. A flavourful amalgamation of cultures, the city proudly flaunts its colourful and creative diversity - sample the sizzle of Cuban flavours, admire the audacity of daring artworks, and discover diverse neighbourhood microcosms, like the legendary Little Havana. The city's crackling creativity is on full display in world-class art galleries such as the Institute of Contemporary Art, while curves, colours, and optimistic flair light up the geometric shapes and pastel hues of the Art Deco District - the world's largest collection of this architectural style. Shopping is a serious art here too - luxury malls are stacked high with glitzy stores. A perfect base for exploring the wetlands of the Everglades - where semi-submerged gators lurk - and a gateway to the turquoise treasures of the Caribbean, magnetic Miami exudes intoxicating extroverted appeal.

## Days 2 - 8 - Day at sea

Days at sea are the perfect opportunity to relax, unwind and catch up with what you've been meaning to do. So whether that is going to the gym, visiting the spa, whale watching, catching up on your reading or simply topping up your tan, these blue sea days are the perfect balance to busy days spent exploring shore side.

## Day 9 - Praia da Vitoria, Azores

Set on the east of is the seventh island in the Azores (if you're starting from the west) Praia da Vitoria often gets overlooked on your way to reach the mainland after days at sea. While many assume the Azores archipelago only offer hardy respite - not to mention terra firma - for travellers who have been enjoying a transatlantic crossing, the archipelago is beginning to gain global recognition as destinations that are well worth visiting in their own right. Praia da Vitoria literally translates as "the beach of victory" yet with such an auspicious name, one would be wrong to assume that it is only fun in the sun on the island. Laden with history dating back to the 15th century, Gaspar Frutuoso (the

celebrated Azorean historian and priest), wrote about Praia in the 16th century calling it "noble and sumptuous". The adjectives certainly ring true even today, with its jumble of narrow streets, recently modernised marina promenade and architectural marvels (the old town dates from 1480), Praia da Vitoria has lost nothing of its past grandeur. A stroll to the main square and its market place - unchanged since 1670, or down to the small 16th century fort south of the beach is proof of that! An interesting quirk to note about the town is that due to the two orders Santo Cristo and Misericordia in the 18th century and in order to please everyone, everything was built in double. This means that the lovely Igreja do Senhor Santo Cristo church (also known as da Misericordia) has two high alters and two choirs. The church dates from 1521 and was partially destroyed in a fire in 1921.

## Day 10 - Ponta Delgada (Sao Miguel Island)

Providing a gorgeous green welcome to sailors venturing on the long journey across the Atlantic, Ponta Delgada's shoreline is a reassuring sight, as it emerges into view. Sat on Sao Miguel Island, the largest of Portugal's Azores islands - which wait on an outpost of western Europe, some 1,100 miles from the mainland. Ponta Delgada is the island's largest city, and a place of spectacular volcanic vistas, steaming hot springs and impressive landscaped gardens. The city's signature trio of arches welcomes you to Ponta Delgada, and its island of verdant volcanic contrasts. Wander between monochrome churches like the Gothic Church of St. Sebastian, and up to the Convent and Chapel of Our Lady of Hope - which houses the revered icon of Christ that is paraded through the streets annually, and believed to have miraculous powers by locals. Or, head for beaches offering sanctuary on charcoal-coloured sands, or the tropical Antonio Borges Botanical Gardens, where tropical plants add extra shades to the Green Island's scenery. Now extinct, the mighty Caldeira das Sete Cidades is a truly awe-inspiring sight - and the colossal collapsed volcanic caldera blooms with lush greenery and scattered wildflowers. The vast crater has been taken over by a glowing, picturesque lake, which reflects the blue sky above. A full three miles wide - and with a circumference of eight miles - it's a vast panorama to take in. The Lagoa de Fogo - or Lake of Fire - is another of the island's calderas - rise up to see the crumpled scenery encasing a beautiful lake. Sao Miguel Island's geothermal activity has practical uses too, and you can harness the powers to unwind any tired muscles after a long day, by sinking into the hot springs of Poca Da Dona.

## Day 11 - Day at sea

Days at sea are the perfect opportunity to relax, unwind and catch up with

Wild Earth Travel

*Small Ships, Big Adventures*

**0800 945 3327** (within New Zealand) | +64 (0) 3 365 1355 | **1800 107 715** (within Australia)

info@wildearth-travel.com | **wildearth-travel.com**



# Wild Earth Travel

*Small Ships, Big Adventures*

**wildearth-travel.com**

**info@wildearth-travel.com**

what you've been meaning to do. So whether that is going to the gym, visiting the spa, whale watching, catching up on your reading or simply topping up your tan, these blue sea days are the perfect balance to busy days spent exploring shore side.

## Days 12 - 13 - Funchal, Madeira

Bedecked with dramatic cliffs, fertile mountains and sun-gorged beaches, Madeira is a lush, colourful island of plants, paradise and Portuguese-flavoured pleasures. Bathing in year-round sunshine, Funchal - the lowkey capital of Madeira - is perfect for slowing the pace, and toasting the thrilling scenery with a bottle of the island's famous wine. Narrow, cobblestone streets line the old town, where whitewash buildings, iron-wrought balconies, and tiled patterns carry echoes of Lisbon. Rua de Santa Maria is the city's oldest street, and the doors have been vividly painted by local artists. Sit for a drink, to sample your choice of Madeira's renowned wines - Boal is the ideal option for those with a sweeter tooth. You'll also find Corpo Santo Chapel here, one of the few remaining buildings to have survived from the 15th century. Blossoming parks and gardens splash colour around, and the sweet smell of pollen lingers in Parque de Santa Catarina. Look out over Funchal harbour between the fountains and blooming flower beds, as ducks and swans enjoy leisurely days on the lake. Madeira Botanical Garden waits in the hills over the city, along with Palheiro Garden - a sophisticated and elegantly landscaped English garden, 500 meters above sea level. For an even more dramatic view of this gorgeous setting, head up to Cap Girao - a rusty-red cliff with a cable car strung up to its sheer drop. The cliff falls away vertically to the vivid blue waters below. Or head down to the sea, to enjoy Funchal's gorgeous pebble beaches rustling, framed by colossal, craggy cliffs.

## Day 14 - Day at sea

Days at sea are the perfect opportunity to relax, unwind and catch up with what you've been meaning to do. So whether that is going to the gym, visiting the spa, whale watching, catching up on your reading or simply topping up your tan, these blue sea days are the perfect balance to busy days spent exploring shore side.

## Day 15 - Lisbon

A glorious mosaic of beauty, freedom and authenticity, Portugal's capital is a

stirring artwork of a city. Known for the seven hills it spreads across, and its stirring fado music, Lisbon is a pastel-coloured blend of houses and beautiful tile artworks - and this creative city strikes a perfect harmony between natural and manmade beauty. Stroll along Alfama's steep, cobbled streets as you explore one of the city's oldest neighbourhoods - where each house and door could be its own photograph. Look for the decorative tiles, with the distinctive blues and whites of Azulejo ceramics, and visit the dedicated museum to learn more. Afterwards, wind up to Sao Jorge Castle, where views out across Lisbon's red rooftops unravel. Just one of many majestic viewpoints, you can also seek out Miradouro da Graça for perhaps Lisbon's finest panorama, with the copper-coloured suspension bridge stretching over sparkling water beyond the sea of buildings. The elegant Tower of Belem rises in the Tagus estuary and is a historic defender of these shores. The grand, carved cloisters of Jeronimos Monastery spread out close by, and there's another UNESCO recognised location close by at Sintra, where a colourful town is set amid thick gardens and towering mountains - capped by the royal Pena Palace. Later, relax and take a quick break to drink Ginjinha, a cherry liqueur made from chocolate cups instead of coffee. Lisboetas have a sweet tooth, and the famous Pastel de Nata's crumbling pastry and caramelised-custard topping is the essential accompaniment to any coffee stop.

## Day 16 - Post Cruise

\_ **\*\*Post Cruise Benefits\*\*** \_  
\_ **\*\*Airport transfers\*\*** \_  
\_ **\*\*International flights - Economy class\*\*** \_  
\_ **\*\*or Business Class upgrade\*\*** \_  
\_ **\*\*Private Executive Transfers\*\*** \_

## Please note:

Itineraries are subject to change.

Wild Earth Travel

*Small Ships, Big Adventures*

**0800 945 3327** (within New Zealand) | +64 (0) 3 365 1355 | **1800 107 715** (within Australia)

info@wildearth-travel.com | **wildearth-travel.com**



# Wild Earth Travel

*Small Ships, Big Adventures*

**wildearth-travel.com**

**info@wildearth-travel.com**

## YOUR SHIP: SILVER NOVA

<b>YOUR SHIP:</b>	<b>Silver Nova</b>
<b>VESSEL TYPE:</b>	<b>Luxury Cruise</b>
<b>LENGTH:</b>	<b>801 Feet / 244.2 Meters</b>
<b>PASSENGER CAPACITY:</b>	<b>728</b>
<b>BUILT/REFURBISHED:</b>	<b>2022/2023</b>

Silver Nova is more than a new ship by Silversea, it is a Nova way of luxury travel.

Introducing Silver Nova - the twelfth ship to join our fleet. Our newest vessel will join us in summer 2023, and will be a home away from home for up to 728 guests. Silver Nova's innovative asymmetrical design introduces the world like never before, offering an immersive destination experience to our guests. With a gross tonnage of 54,700 tons she will offer a space-to-guest ratio of 75 GRT-per-passenger becoming one of the most spacious cruise ships ever built. What's more, Silver Nova will be our most environmentally friendly, and thanks to her groundbreaking technological solutions, she will propel Silversea into a new era of sustainable cruising. It's the Nova way to travel.

**S.A.L.T. Chef's Table** - An intimate dining experience with a curated tasting menu highlighting regional flavors. Includes wine & cocktail pairing. Reservation fee: \$180.

**S.A.L.T. Kitchen** - Destination-inspired menus featuring local flavors. The Terrain menu showcases the current port, while the Voyage menu offers highlights from the journey.

**Atlantide** - Classic fine dining with a sophisticated ambiance.

Indulge in premium ingredients like caviar, lobster, and exquisite desserts.

**La Terrazza** - Authentic Italian cuisine with homemade pasta, antipasto, risotto, and bold regional wines. Enjoy stunning views from the outdoor terrace.

**La Dame** - French fine dining with curated tasting menus and wine pairings. Reservation fee: \$160.

**Kaiseki** - Japanese culinary artistry with sake, whiskey, or tea pairings. Reservation fee: \$80.

**Silver Note** - A lively venue with gourmet tapas, jazz, and soul music, perfect for a night of entertainment.

**The Grill** - Casual dining by day, transforming into the "Hot Rocks" BBQ experience at night, set in The Marquee.

**Spaccanapoli** - Thin, freshly made pizzas from Naples, served in an open-air setting at The Marquee.

**The Pool Deck** - Spacious sun deck with Silversea's largest pool and an infinity-edge whirlpool for ultimate relaxation.

**The Dusk Bar** - Open-air sky bar offering panoramic views and destination-inspired cocktails.

**The Marquee** - A relaxed outdoor venue combining The Grill and Spaccanapoli for casual dining.

**Arts Cafe** - A cultural hub for light bites, fresh juices, coffee, and artistic inspiration.

**S.A.L.T. Bar** - Locally inspired cocktails reflecting each destination.

**S.A.L.T. Lab** - Hands-on culinary workshops exploring local food culture.

**The Shelter** - An elegant cocktail bar offering signature drinks in an intimate setting.

**Wild Earth Travel**

*Small Ships, Big Adventures*

**0800 945 3327** (within New Zealand) | +64 (0) 3 365 1355 | **1800 107 715** (within Australia)

info@wildearth-travel.com | **wildearth-travel.com**



# Wild Earth Travel

*Small Ships, Big Adventures*

**wildearth-travel.com**

**info@wildearth-travel.com**

Dolce Vita - The ship's social hub, featuring live piano music and expertly crafted cocktails.

Panorama Lounge - A versatile space for relaxing by day and live music or DJ sets at night.

Connoisseur 's Corner - A stylish cigar lounge with premium selections.

Observation Lounge - A peaceful retreat with panoramic sea views and an in-house library.

The Venetian Lounge - A grand theatre for live performances and film screenings.

Atrium - The heart of the ship, home to key services, The Shelter, and Arts Cafe, with stunning floor-to-ceiling windows.

Boutique - Luxury shopping at sea, featuring premium brands and exclusive collections.



ollections.

Wild Earth Travel

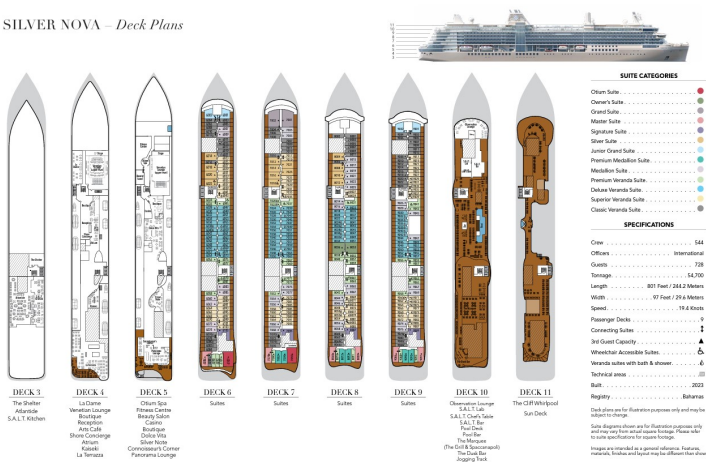
*Small Ships, Big Adventures*

**0800 945 3327** (within New Zealand) | +64 (0) 3 365 1355 | **1800 107 715** (within Australia)

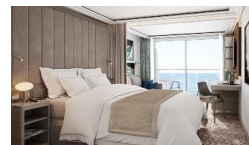
info@wildearth-travel.com | **wildearth-travel.com**

## INSIDE YOUR SHIP

SILVER NOVA – Deck Plans



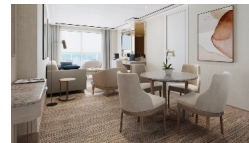
### Classic Veranda



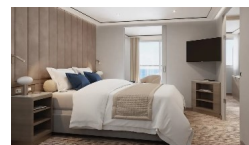
### Grand 1 Bedroom



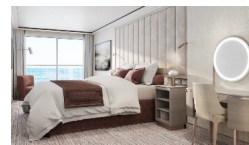
### Junior Grand 2 Bedroom



### Medallion



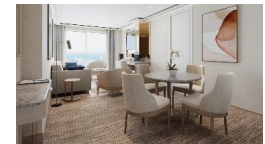
### Owner 1 Bedroom



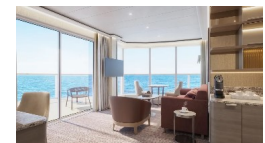
### Deluxe Veranda



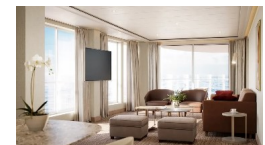
### Junior Grand 1 Bedroom



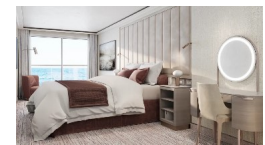
### Master



### Otium



### Owner 2 Bedroom



# Wild Earth Travel

*Small Ships, Big Adventures*

[wildearth-travel.com](http://wildearth-travel.com)

[info@wildearth-travel.com](mailto:info@wildearth-travel.com)

## PRICING

### 30-May-2026 to 15-Jun-2026

Classic Veranda	21500 AUD pp
Superior Veranda	21900 AUD pp
Deluxe Veranda	22400 AUD pp
Premium Veranda	22800 AUD pp
Medallion	31700 AUD pp
Premium Medallion	34200 AUD pp
Junior Grand 1 Bedroom	35600 AUD pp
Silver	37400 AUD pp
Signature	43000 AUD pp
Master	44600 AUD pp
Grand 1 Bedroom	45300 AUD pp
Junior Grand 2 Bedroom	45900 AUD pp
Owner 1 Bedroom	54600 AUD pp
Otium	57800 AUD pp
Owner 2 Bedroom	75100 AUD pp

Classic Veranda	20000 AUD pp
Superior Veranda	20300 AUD pp
Deluxe Veranda	20800 AUD pp
Premium Veranda	21100 AUD pp
Medallion	28100 AUD pp
Premium Medallion	30300 AUD pp
Junior Grand 1 Bedroom	31400 AUD pp
Silver	32300 AUD pp
Signature	35400 AUD pp
Master	37800 AUD pp
Grand 1 Bedroom	40100 AUD pp
Junior Grand 2 Bedroom	45900 AUD pp
Owner 1 Bedroom	49500 AUD pp
Otium	52200 AUD pp
Owner 2 Bedroom	68500 AUD pp

### 22-Mar-2027 to 07-Apr-2027