

# Wild Earth Travel

*Small Ships, Big Adventures*

**wildearth-travel.com**

**info@wildearth-travel.com**

## 17 DAYS LUXURY BRITISH ISLES & ICELAND CRUISE - DUBLIN TO DUBLIN

Witness the authentic raw beauty of the wild and remote British Isles and Iceland, which are so far from big cities that they are best explored by boat. Start with Iceland with its patchwork of glaciers, peaceful blue seas and soaring mountains. You'll sail to the far north of Scotland to discover uninhabited islands, see colonies of rare seabirds such as puffins, and dine on delicious local cuisine. These lands are rich in culture, history and tradition.



### ITINERARY

#### Days 0 - 1 - Pre Cruise & Dublin

- \_ **\*\*Pre Cruise Benefits\*\*** \_
- \_ **\*\*Private Executive Transfers\*\*** \_
- \_ **\*\*International flights - Economy class\*\*** \_
- \_ **\*\*or Business Class upgrade\*\*** \_
- \_ **\*\*Airport transfers\*\*** \_

Atmospheric cobbled streets, with buskers scraping fiddles and characterful pubs inviting passersby inside, is Dublin in a snapshot. A city of irrepressible energy and lust for life, Ireland's capital is as welcoming a place as you'll find. Horse-drawn carriages plod along cobbled centuries-old streets, blending with an easy-going, cosmopolitan outlook. Known for its fun-filled gathering of pubs, any excuse works to enjoy a celebratory toast and chat among good company. Home to perhaps the world's most famous beer - slurp perfect pourings of thick, dark Guinness - cranked out for the city's thirsty punters. Learn more of the humble pint's journey at the Guinness Storehouse. Dublin

**Wild Earth Travel**

*Small Ships, Big Adventures*

**0800 945 3327** (within New Zealand) | +64 (0) 3 365 1355 | **1800 107 715** (within Australia)

info@wildearth-travel.com | **wildearth-travel.com**

# Wild Earth Travel

*Small Ships, Big Adventures*



**wildearth-travel.com**

**info@wildearth-travel.com**

has come along way since the Vikings established a trading port here, back in the 9th Century. In the time since, the city became the British Empire's defacto second city, and the Georgian imprint still adds oodles of historic character. Learn of 1916's Easter Uprising, when the Irish rebelled and established their independence here, as you visit the infamous, haunting Kilmainham Gaol. The uprising's leaders were tried and executed in these dark confines. Dublin's St. Patrick's Cathedral has immense history below its steep spire, which dates back to 1191. There's rich literary heritage to leaf through too, and the city's streets were rendered vividly in James Joyce's classic Ulysses. The Museum of Literature celebrates the full scope of Dublin's lyrical talents. Trinity College also has a prestigious roll-call of alumni - visit to see the Book of Kells, a beautifully illustrated bible of the medieval era.

## Day 2 - Duart, Isle of Mull, Hebrides

An ancient stone castle on a remote rugged landscape evokes all sorts of fantasies, especially when approached from the sea. You can imagine mythical, romantic or historic tales as you approach or explore the Duart Castle on the Isle of Mull. The true stories may be just as good.

The Isle of Mull is the second largest of the islands of the Inner Hebrides, after the Isle of Skye. The island has a mountainous core and several radiating promontories covered in moorland. On one headland jutting into the Sound of Mull sits Duart Castle. It was originally built in the 13th century and soon became the ancestral home of the Clan Maclean. Control and ownership of the castle has changed hands over the centuries as broader conflicts for the Isle of Mull and Scotland played out. It was a ruin when the Maclean clan regained control by purchasing and restoring the castle in 1911. It is clan home for all the descendants of the family of Maclean spread throughout the world.

There are stories of wrecks and treasure in the waters near Duart. The most evocative must be the wreck of a Spanish galleon in Tobermory Bay. This ship was part of the Spanish Armada defeated by the English fleet and Atlantic storms, and the crew were taken to Duart Castle. The galleon is rumoured to have a treasure of gold bullion still waiting to be found. Zodiac travel may reveal other treasures. Mull is known for its European Otters and the majestic White-tailed Sea Eagle which has successfully re-colonised Mull after a long absence.

## Day 3 - St. Kilda

Gloriously remote, St. Kilda is an archipelago 50 miles off the Isle of Harris.

Although the four islands are uninhabited by humans, thousands of sea birds call these craggy cliffs home, clinging to the sheer faces as if by magic. Not only is St. Kilda home to the UK's largest colony of Atlantic Puffin (almost 1 million), but also the world largest colony Gannets nests on Boreray island and its sea stacks. The islands also home decedents of the world's original Soay sheep as well as having a breed of eponymously named mice. The extremely rare St. Kilda wren unsurprisingly hails from St. Kilda, so birders should visit with notebook, binoculars and camera to hand. While endemic animal species is rife on the island, St. Kilda has not been peopled since 1930 after the last inhabitants voted that human life was unsustainable. However, permanent habitation had been possible in the Medieval Ages, and a vast National Trust for Scotland project to restore the dwellings is currently being undertaken. The islands even enjoyed a status as being an ideal holiday destination in the 19th century. Today, the only humans living on the islands are passionate history, science and conservation scholars. One of the caretakers even acts as shopkeeper and postmaster for any visitors who might like to send a postcard home from St. Kilda. It should be noted that St. Kilda is the UK's only (and just one of 39 in the world) dual World Heritage status from UNESCO in recognition of its Natural Heritage and cultural significance.

## Day 3 - Boreray Island cruising

Erupting out of the Atlantic waters like a mythical beast, Boreray Island captivates all those who lay eyes upon it. As we approach, listen out for sharp intakes of breath - the abrasive and immense form of this staggering island never fails to astound. Few locations command such awe as uninhabited Boreray, left to the seabirds since the last residents of the St Kilda Islands departed in 1930. Watch as vast numbers of Northern Gannets glide overhead before attempting skilful landings at tucked-away nest sites or plunge into the sea, seeking food for their new chicks. Northern Fulmars also make their homes on the volcanic cliffs, while Atlantic Puffins dart in and out of burrows on the slopes. The rugged, rocky island is also well known for the hardy sheep who cling to its shores. You might be able to pick out the rare Boreray Sheep, unique to the island, grazing on the hilly slopes as we cruise alongside the island and the attendant rock stacks that stand tall against the Atlantic onslaught. Boreray forms a part of the dramatic St Kilda World Heritage Site and is a rare example of a site recognised for both its outstanding natural and cultural values.

## Day 4 - Day at sea

Days at sea are the perfect opportunity to relax, unwind and catch up with

Wild Earth Travel

*Small Ships, Big Adventures*

**0800 945 3327** (within New Zealand) | +64 (0) 3 365 1355 | **1800 107 715** (within Australia)

info@wildearth-travel.com | **wildearth-travel.com**



# Wild Earth Travel

*Small Ships, Big Adventures*

**wildearth-travel.com**

**info@wildearth-travel.com**

what you've been meaning to do. So whether that is going to the gym, visiting the spa, whale watching, catching up on your reading or simply topping up your tan, these blue sea days are the perfect balance to busy days spent exploring shore side.

## Day 5 - Djupivogur

Slow the pace and discover the refreshing approach to life that Djupivogur has made its trademark. You can leave your phone behind as you step out into this Icelandic town, which has won awards celebrating its leisurely outlook and stubborn rebellion against the frenetic pace of modern life. After all, who needs emails and notifications when you have some of the most humbling monochrome scenery and gashed fjords, waiting on your doorstep? Sitting on a peninsula to the south-east of Iceland, the glacial approach to life here wins many hearts. A place where hammers knock on metal in workshops, artists ladle paint onto canvases, and where you might spot a few Icelandic horses roaming across mountains, Djupivogur is an uninhibited artistic hub - full of makers and creatives. The most expansive project is the 34 egg sculptures that dot the coastline, created by the Icelandic artist, Sigurður Guðmundsson. Each egg represents a different native bird species. Fishing remains the primary industry, and you can savour the soft fruits of the labour in restaurants serving up smoked trout and fish soup within their cosy confines. Wander the surrounding landscapes, where snow-freckled mountains rise, and lazy seals lie on dark rock beaches, to feel Djupivogur's natural inspiration seeping under your skin. Alive with greens and golds in summer, further ventures reveal glaciers and the sprawling waterfalls of Vatnajökull National Park. The cliff-hugging puffins of Papey Island are a must see, while Bulandstindur Mountain's pyramid shape is a stand out even among these fairy-tale landscapes.

## Day 6 - Tumulavik

Connect with an authentic way of life amid the achingly beautiful landscapes of Iceland's north. As you delve into this raw and secluded environment, the volcanic beaches, moss-covered tundra expanses and rich blue Atlantic waters form a stunning visual palette. Setting foot ashore onto the region's stark and scenic sands, you will learn fascinating stories of life and land at this far-northerly latitude. Connect with the warm locals who reside at this remote location and have many stories to share spanning generations. Relax amid the glorious grandeur of the landscape, breathing in the crisp, northerly air - or join a hike to tread spectacular trails across landscapes framed by salt-and-pepper mountains in the distance. On the dark, volcanic beaches, you may witness

adorable Icelandic horses cantering along, their hooves splashing through the gentle waves as they roll in. Keep your eyes peeled to spot Iceland's diverse birdlife and other wildlife during your time in Tumulavik; new encounters are never too far away.

## Day 6 - Raufarhofn

Located in the very northernmost reaches of Iceland, Raufarhofn sits within touching distance of the Arctic Circle. This small, unassuming town, known as the Arctic Circle Village, was once a bustling hub of the herring trade until its decline in the 1970s. This proximity to the Arctic Circle - just a few miles offshore - provides Raufarhofn with long summer days, dark winters, and intense prolonged sunsets and sunrises. This ethereal setting is the ideal location for an ode to Iceland's rich folk traditions. Just outside the town, the Arctic Henge, a colossal modern monument inspired by ancient pagan traditions, awaits. The brainchild of a local visionary Erlingur Thoroddsen, the stone circle here was designed by Icelandic artist Haukur Halldorsson. The series of tapering archways and concentric stone circles span 52 metres in diameter and carefully integrates inspirations from the Eddic poem Voluspá and Norse mythology. Composed of vast basalt stones, the henge aligns with celestial events and dramatically frames the midnight sun's majesty, serving as a pagan calendar. A truly unique site in Iceland; it's hard not to feel a profound sense of awe at this latitude as the stone circle glows in honeyed daylight, casting beautiful shadows all around.

## Day 7 - Hofos

Enjoy a rejuvenating glimpse into northern Iceland's immense beauty. Sitting on the Skagafljörður Fjord's eastern edge, Hofos was one of Iceland's oldest trading stations, and the colourful village has successfully retained its unique historical charm. The scenic fjord's waters are punctuated by a trio of stark islands, which beckon birdwatchers and folklore enthusiasts alike - spot puffins and seabird colonies amid the artfully sculpted rock formations and cathedral-like cliffs. The Hofos swimming pool is one of Iceland's most beautiful opportunities for a dip. Sink into the warm pool waters and drift toward the infinity edge, where it appears as though you could swim out into the breathtaking fjord waters towards the distant mountain border. Close to the pool is a set of basalt rock columns stacked up like natural organ pipes. Dry off ahead of a visit to Hofos's thoughtful museum, which details the stories of the thousands of Icelanders who emigrated to North America in the 1800s, seeking an escape from the challenging life at the time, which was wrought by a cycle of volcanic eruptions and perilous famines. Nearby, you

Wild Earth Travel

*Small Ships, Big Adventures*

**0800 945 3327** (within New Zealand) | +64 (0) 3 365 1355 | **1800 107 715** (within Australia)

info@wildearth-travel.com | **wildearth-travel.com**

# Wild Earth Travel

*Small Ships, Big Adventures*



**wildearth-travel.com**

**info@wildearth-travel.com**

can also find a small, almost camouflaged surprise blending into the surrounding mountains - the oldest church in Iceland. The stunning setting and turf-clad wooden chapel propose a peaceful moment of contemplation and tranquillity.

## Day 7 - Malmey Island

Emerging from the tranquil waters of Skagafjörður in northern Iceland, Malmey Island is a striking s-shaped strip of land, its perspective constantly shifting as you sail alongside. In combination with its sister islands - the steep-sided Drangey and the puffin-populated Lundey - Malmey forms a distinctive trio, each contributing intrigue to the scenic fjord. Spanning just over two miles in length and less than a mile in width, Malmey Island is a captivating feature of Skagafjörður, surrounded by the remote beauty of the Icelandic wilderness and undulating mountain valleys. At the island's southern tip stands a solitary orange lighthouse, overseeing an area rich in mystery, history, and intriguing folklore. Legend has it that the island bears curses, foretelling doom for any family that dares to inhabit it for over twenty years. Whispers say that any housewife who dares to test this is doomed to a grim fate of madness and disappearance, while another legend states that horses and mice cannot remain on the island. The island has lain uninhabited since a devastating fire wiped out a small farming community of 14 people in 1950 - aside from the abundant birdlife, which can be spotted on the cliffs and swirling above the waters. Massive breaching whales and lazy seals are also regular visitors to these waters.

## Day 7 - Drangey Island

Drangey Island, famed as the refuge of Iceland's most notorious outlaw - Grettir the Strong - stands as a commanding fortress of rock in the tranquil waters of Skagafjörður. A stark interruption to the expansive, open views of the fjord, this natural citadel is also a stronghold for dozens of nesting seabird colonies. This dramatic island, which towers 180 metres high, is a lasting remnant of a 700,000-year-old volcano - although Icelandic folklore dictates that the island formed when two trolls and their cow were petrified by the morning sun's rays while attempting to traverse the fjord. The island's lore runs deep, and Drangey is intrinsically intertwined with tales from the 'Grettis Saga'. Drangey Island was Grettir's last escape, and he spent his final three years in exile here alongside his brother Illugi before finally succumbing to his enemies. Today, the only outlaws to be found running amok are the hordes of curious puffins and other seabirds, such as white-bellied guillemots and diving gannets, which thrive on the steep, sheer cliffs. Below, in the deep fjord

waters, the sounds of whalesong reverberate, and gentle giants like humpbacks and minke whales frequent these waters.

## Day 8 - Djupavik

Almost swallowed whole by the scenic embrace of Iceland's Westfjords, tiny Djupavik enjoys a starkly beautiful location, which echoes with forgotten industry. This northwestern haven is often cut off by winter's heavy snows and reachable only by a winding road, adding to the aura of distant adventure. The ceaseless murmur of Djupavikurfoss waterfall calls visitors ashore to a small huddle of cherry red houses trimmed in cream beside the glistening fjord waters. Set in one of the most sparsely populated regions on the island, the shore is dominated by an incongruous, sprawling factory. When built, it was the largest concrete structure in Iceland and a state-of-the-art hub of advanced automation and entrepreneurship. Now hauntingly silent, the abandoned herring factory, which dates back to 1934, serves as an eerie reminder of the once-thriving trade that sprung up in an unlikely manner in this far-flung corner of Iceland. Explore the remains, including the rusting ship that once served as a dormitory for the factory's male workers and now rests forlornly near the water. Nowadays, the factory's shell has been carefully and creatively repurposed as an evocative art gallery and hotel. Hikers can wander amid the fjord's beautiful setting, with trails offering explorations of the tumbling waterfall behind and widescreen views of the picturesque, moody Reykjarfjörður fjord scenery below.

## Day 8 - Veidileysufjörður

Discover northern Iceland's fantastic, outlying beauty as you cruise the majestic Veidileysufjörður. Nestled away in the scenic Westfjords, relatively few visitors reach this secluded area. Enjoy privileged access as we sail into the waters of the fjord, with its steep, bowl-like valley sides. Veidileysufjörður's serene isolation makes it an ideal locale for revelling in Iceland's grandiose natural glory, and you can admire views of snow-capped peaks contrasting sharply against the deep navy-blue hues of the North Atlantic. At the fjord's terminus, a bubbling waterfall tumbles its way leisurely down the emerald hillside from above. The pristine fjord is also a place to look out for Iceland's incredible marine life; during summer, humpback whales and playful seals often frequent its inky waters. Soak in the silence and serenity, punctuated only by the calls of seabirds like Black-legged Kittiwakes and Common Guillemots, which swoop above the water's surface, their calls echoing across the still waters. Just beyond the northern mountains of Veidileysufjörður lies Djupavik fjord, which boasts its own attractive waterfall and a repurposed

Wild Earth Travel

*Small Ships, Big Adventures*

**0800 945 3327** (within New Zealand) | +64 (0) 3 365 1355 | **1800 107 715** (within Australia)

info@wildearth-travel.com | **wildearth-travel.com**



# Wild Earth Travel

*Small Ships, Big Adventures*



**wildearth-travel.com**

**info@wildearth-travel.com**

historic herring factory.

## Day 9 - Husavik

There's simply nowhere better than Husavik - the European capital of whale watching - for getting up close and personal with the majestic giants of the ocean. Feel the awe as whales breach the waves around you, before gulping in air and plunging away with almighty tale flicks. Pretty Husavik is framed by the majestic Husavikurfjall mountain, which swells up behind, creating a stunning backdrop for the town's tiny wooden warehouses, cherry red houses and undulating fishing ships. The little wooden church has been a beacon of light, guiding tired fishermen back to the shores of Iceland's oldest settlement, since 1907. Let the wind rip through your hair and the sea speckle your face, as you ride waves out among the region's almighty marine creatures, who throw their weight around so spectacularly. Sail among gentle giants in Shaky Bay, spotting humpbacks, minke whales and the world's biggest - blue whales. You may also see teams of smaller white-beaked dolphins skipping across the waves, displaying the full range of acrobatic skills. The town's whale museum is an interesting journey through Iceland's relationship with the sea giants, while its restaurants serve up local specialities - taste juicy reindeer burger and plokkskukur, a buttery mash of local fish. Hikes into the surrounding countryside can take you up around Lake Botnsvatn, to views down from the slopes of the Husavikurfjall - where purple spired lupin flowers spill down amongst the emerald slopes. From the summit, look out over views of the bay, reaching out to the crumpled snowy peaks beyond. Or feel the full force of this land of natural power, at Dettifoss Waterfall, one of Europe's most powerful, thrashing flumes.

## Day 10 - Eskifjörður

"Almost swallowed up by the looming forms of Eskja and Holmatindur mountains, the quiet fishing village of Eskifjörður minds its own business in the midst of some of Iceland's most extroverted natural scenery. A place where the wind's gentle whistle and the whir of fishing rods unspooling are the only sounds you hear as you stroll, Eskifjörður is a peaceful introduction to eastern Iceland's fjord lands. Get lucky, and you'll witness the scenic setting bathed in an otherworldly, achingly-beautiful light - as daylight trickles away and emerald plumes spread across the night's sky. Natural wonders abound here, whether it's the streams that gurgle, the finger-like reach of the Reyðarfjörður fjord, or the geothermal pools that bubble with warmth from the depths of the earth. Holmatindur mountain lends the area's scenery evocative drama, soaring from the waters like a snow-speckled pyramid. Ambitious hikers who conquer the

peak will be richly rewarded with magnificent widescreen panoramas across the stunning landscape. The views are no less mesmerising from ground level, with pretty, cherry-red fishing huts adding a charming accent to the landscape. Indulge in gentler walks among the cacophony of birdlife, or take in cultural pursuits like the Maritime Museum, and exposed spar mine nearby. Fishing is a way of life here, and the glass-smooth fjord waters hold a rich bounty for keen anglers. Try for yourself - to witness first hand how the fish practically jump onto your line - or leave it to the experts and taste the produce that Eskifjörður is best known for - shark meat and pickled herring."

## Day 11 - Day at sea

Days at sea are the perfect opportunity to relax, unwind and catch up with what you've been meaning to do. So whether that is going to the gym, visiting the spa, whale watching, catching up on your reading or simply topping up your tan, these blue sea days are the perfect balance to busy days spent exploring shore side.

## Day 12 - Kirkwall, Orkney Islands, Scotland

Scattered just off the northern tip of Scotland, Kirkwall is the capital of the Orkney Islands - a scenic archipelago of fascinating, dual heritage. The Viking influence is deep, while a prehistoric past and World War history adds to the endless stories that these dramatic islands have to tell. Sparse and beautiful, let the sweeping seascapes of frothing waves, and dance of the northern lights, enchant you as you explore. Windswept beaches are inhabited by whooping swans, while grassy cliffs hide puffins amid their wavy embrace. Sea caves and crumbling castles - and the dramatic meeting of the North Sea and the Atlantic Ocean add to the romantic beauty of these lands, which may be physically close to the UK, but feel an entire world away. The sandstone St. Magnus Cathedral is the centrepiece of Orkney's main town - a place of winding lanes and atmospheric walks - and Britain's northernmost cathedral is a masterpiece that took 300 years to complete. Started in 1137, the beautiful cathedral is adorned with mesmerising stain-glass windows and has been evocatively named as the Light of the North. Look down over the ruined Bishop's and Earl's Palaces nearby from the tip of the cathedral's tower. Or, test out the islands' history-rich distilleries, which produce smokey single malts - said to be the best in the world. You can also venture out to Europe's best-preserved Stone Age Village, at the extraordinary World Heritage Site of Skara Brae, which offers an unparalleled vision into prehistoric life.

Wild Earth Travel

*Small Ships, Big Adventures*

**0800 945 3327** (within New Zealand) | +64 (0) 3 365 1355 | **1800 107 715** (within Australia)

info@wildearth-travel.com | **wildearth-travel.com**

# Wild Earth Travel

*Small Ships, Big Adventures*



**wildearth-travel.com**

**info@wildearth-travel.com**

## Day 13 - Iona

If tiny islands that resonate with peace and tranquillity are your idea of travel heaven, then welcome to Iona. Almost 200 miles east of Edinburgh, set in Scotland's Inner Hebrides, this magical island has a spiritual reputation that precedes it. And luckily, more than lives up to. The island is miniscule. Just three miles long and only one and a half miles wide, this is not a place that hums with urban attractions. 120 people call Iona home (this number rises significantly if the gull, tern and Kittiwake population is added), although residential numbers do go up (to a whopping 175) in summer. The beautiful coastline is lapped by the gulf stream and gives the island a warm climate with sandy beaches that look more Mediterranean than Scottish! Add to that a green field landscape that is just beautiful, and you'll find that Iona is a place that stays with you long after you leave. Iona's main attraction is of course its abbey. Built in 563 by Saint Columba and his monks, the abbey is the reason why Iona is called the cradle of Christianity. Not only is the abbey (today an ecumenical church) one of the best - if not the best - example of ecclesiastical architecture dating from the Middle Ages, but it also serves as an important site of spiritual pilgrimage. St. Martin's Cross, a 9th century Celtic cross that stands outside the abbey, is considered as the finest example of Celtic crosses in the British Isles. Reilig Odhrain, or the cemetery, allegedly contains the remains of many Scottish kings.

## Day 13 - Lunga

The stunning Isle of Lunga is the largest island in the Treshnish archipelago. With volcanic origin the isle was populated until the 19th Century, and remains of black houses can be seen around this magnificent coastal jewel. Abundant plant life and exotic birdlife are now the main inhabitants of the area. Fortunate visitors view the magnificent array of birds, especially the great puffins that breed on the islands plateau. One can sit within just a few feet away without disturbing the avian ambassador's peace. The 81 hectare island is home to many rare and endangered plants such as, primroses and orchids. Views over the landscape and across the ocean can be seen from the 300 foot high cliffs.

## Day 14 - Belfast

Reborn as a cool, modern city, Belfast has successfully left its troubles behind, emerging as a hotbed of culture and architecture, where the comfort of a cosy

pub is never far away. Take a voyage of discovery in its maritime quarter, home to a celebrated museum dedicated to the most famous ship ever built, which was constructed right here in the city's shipyards. A walk across the Lagan Weir Footbridge brings you to Belfast's fascinating Titanic District - an area of the city devoted to its rich ship-building heritage. The state-of-the-art Titanic Museum brings the story of the doomed vessel to life, and is the largest museum dedicated to the infamously 'unsinkable' ship. Wind up a nautical-themed ramble along the Maritime Mile with a visit to SS Nomadic, the smaller cousin of the Titanic, and a ship which serves as a fascinating time capsule back to the pomp and grandeur of the Titanic, while also telling its own stories of service in both World Wars. There's just enough time to give the 10-metre long Salmon of Knowledge sculpture a quick peck for luck, before continuing to explore. A stark barbed wire and graffitied sheet metal barrier marks an abrupt scar through the city's residential areas. The Peace Line was constructed during the height of the Troubles, when Belfast was plagued by sectarian divisions between Protestants and Catholics. Nowadays, you can jump in a black taxi tour to see the colourful murals and living history of the walls, which stand as a stark reminder of the fragility of peace. After exploring the city's historic divisions, a reminder of Belfast's uniting creativity can be found at the Metropolitan Arts Centre - a seven-storey tall building, which invites light to gloriously cascade inside. The Cathedral Quarter is a cobbled blend of flower-adorned pubs, restaurants and theatres, and venues where music spills out onto the streets at night, and many a pint is cheerily shared.

## Day 15 - Dublin

Atmospheric cobbled streets, with buskers scraping fiddles and characterful pubs inviting passersby inside, is Dublin in a snapshot. A city of irrepressible energy and lust for life, Ireland's capital is as welcoming a place as you'll find. Horse-drawn carriages plod along cobbled centuries-old streets, blending with an easy-going, cosmopolitan outlook. Known for its fun-filled gathering of pubs, any excuse works to enjoy a celebratory toast and chat among good company. Home to perhaps the world's most famous beer - slurp perfect pourings of thick, dark Guinness - cranked out for the city's thirsty punters. Learn more of the humble pint's journey at the Guinness Storehouse. Dublin has come along way since the Vikings established a trading port here, back in the 9th Century. In the time since, the city became the British Empire's defacto second city, and the Georgian imprint still adds oodles of historic character. Learn of 1916's Easter Uprising, when the Irish rebelled and established their independence here, as you visit the infamous, haunting Kilmainham Gaol. The uprising's leaders were tried and executed in these dark confines. Dublin's St. Patrick's Cathedral has immense history below its steep spire, which dates back to 1191. There's rich literary heritage to leaf through too, and the city's

Wild Earth Travel

*Small Ships, Big Adventures*

**0800 945 3327** (within New Zealand) | +64 (0) 3 365 1355 | **1800 107 715** (within Australia)

info@wildearth-travel.com | **wildearth-travel.com**



# Wild Earth Travel

*Small Ships, Big Adventures*



**wildearth-travel.com**

**info@wildearth-travel.com**

streets were rendered vividly in James Joyce's classic *Ulysses*. The Museum of Literature celebrates the full scope of Dublin's lyrical talents. Trinity College also has a prestigious roll-call of alumni - visit to see the Book of Kells, a beautifully illustrated bible of the medieval era.

## Day 16 - Post cruise

- \_ **\*\*Post Cruise Benefits\*\*** \_
- \_ **\*\*Airport transfers\*\*** \_
- \_ **\*\*International flights - Economy class\*\*** \_
- \_ **\*\*or Business Class upgrade\*\*** \_
- \_ **\*\*Private Executive Transfers\*\*** \_

Please note:

Itineraries are subject to change.

Wild Earth Travel

*Small Ships, Big Adventures*

**0800 945 3327** (within New Zealand) | +64 (0) 3 365 1355 | **1800 107 715** (within Australia)

info@wildearth-travel.com | **wildearth-travel.com**

# Wild Earth Travel

*Small Ships, Big Adventures*

**wildearth-travel.com**

**info@wildearth-travel.com**

## YOUR SHIP: SILVER WIND

<b>YOUR SHIP:</b>	<b>Silver Wind</b>
<b>VESSEL TYPE:</b>	<b>Small Luxury Cruise Ship</b>
<b>LENGTH:</b>	<b>156.7 metres</b>
<b>PASSENGER CAPACITY:</b>	<b>274</b>
<b>BUILT/REFURBISHED:</b>	<b>1995 / Refurbished</b>

A major upgrade in December 2018 saw Silver Wind looking better than ever. A second refurbishment in summer 2021 will see her benefitting from a strengthened to ice-class hull and will make her one of the most adaptable ships in our fleet. Still timelessly elegant, still luxuriously relaxed, her improved cruising versatility means she is able to whizz from the Polar Regions at the ends of the earth to the iconic ports of the Mediterranean with fluid ease. So whether you want to get up close and personal to penguins in Antarctica or laze on the golden sands of the Caribbean, get ready for a wealth of diverse destination experiences, in traditional Silversea comfort.

### Dining

**The Grill.** Soft breezes and ocean views beckon at the Grill, especially as the sun goes down when cruise guests gather for cocktails at the outdoor bar and talk about the day's events.

**La Terrazza.** Authentic Italian recipes and the freshest, sustainable ingredients come together in this restaurant at sea.

**The Restaurant.** Enjoy Continental and regional specialities, as well as sweeping ocean views in our main dining room.

**La Dame.** La Dame features a menu of seasonally inspired dishes prepared with the freshest locally sourced ingredients.

### Public Areas

**Pool Deck.** Chaise lounges arranged in the sun or shade. Bubbling whirlpools. The pool water refreshing in warmer climates, heated for cooler weather.

**Reception.** Be sure to visit the Reception area, where our experts can provide invaluable information to help you get the most out of your cruise.

**Fitness Centre.** The Fitness Centre offers world-class equipment, classes, and personalized services.

**Connoisseur's Corner.** If you appreciate good cognac or premium cigars, be sure to visit the Connoisseur's Corner to see the ship's exceptional selection.

**Boutique.** There is a wealth of luxury shopping experiences aboard all Silversea ships, featuring the most distinctive and appealing brands from across the globe.

**The Show Lounge.** Applaud a broad spectrum of entertainment -- from full-scale production shows and classical soloists, to cultural entertainment and feature films.

**Panorama Lounge.** Relax and unwind in the Panorama Lounge, a sophisticated yet amicable space offering beautiful ocean views as you enjoy your cruise.

**Zagara Beauty Spa.** Come and indulge in a luxurious spa treatment. Facials, body wraps, massages: the spa is the perfect place to unwind.

**Dolce Vita.** Dolce Vita is the gathering place for our savvy travellers of the world, a place where guests mingle and exchange stories and where new faces become lifelong friends.

**Zagara Beauty Salon.** Maintain your fresh look throughout your

Wild Earth Travel

*Small Ships, Big Adventures*

**0800 945 3327** (within New Zealand) | +64 (0) 3 365 1355 | **1800 107 715** (within Australia)

info@wildearth-travel.com | **wildearth-travel.com**



# Wild Earth Travel

*Small Ships, Big Adventures*



**wildearth-travel.com**

**info@wildearth-travel.com**

luxury cruise at the Zagara Beauty Salon. Services are available for men and women.

Observation Library. The Observation Library boasts exceptional views overlooking the ocean as it stretches out below you while you enjoy your cruise.

Photo Studio. The Photo Studio offers a professional space for budding photographers to retouch, print and display their work.



their work.

Wild Earth Travel

*Small Ships, Big Adventures*

**0800 945 3327** (within New Zealand) | +64 (0) 3 365 1355 | **1800 107 715** (within Australia)

info@wildearth-travel.com | **wildearth-travel.com**

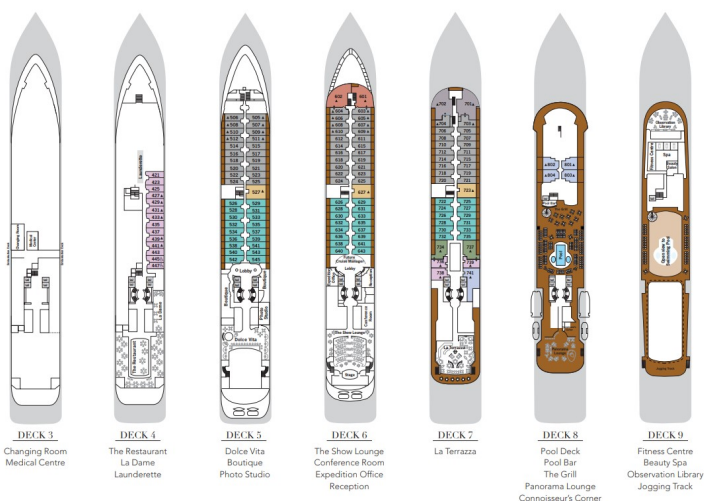
# Wild Earth Travel

*Small Ships, Big Adventures*

[wildearth-travel.com](http://wildearth-travel.com)

[info@wildearth-travel.com](mailto:info@wildearth-travel.com)

## INSIDE YOUR SHIP



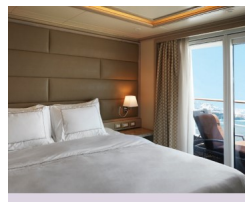
Grand 1 Bedroom



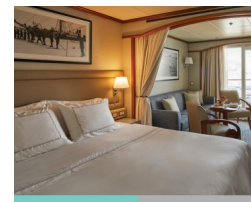
Grand 2 Bedroom



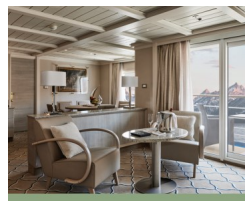
Medallion



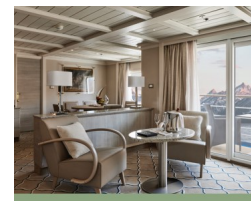
Midship Veranda



Owner 1 Bedroom



Owner 2 Bedroom



Wild Earth Travel

*Small Ships, Big Adventures*

0800 945 3327 (within New Zealand) | +64 (0) 3 365 1355 | 1800 107 715 (within Australia)

[info@wildearth-travel.com](mailto:info@wildearth-travel.com) | [wildearth-travel.com](http://wildearth-travel.com)



# Wild Earth Travel

*Small Ships, Big Adventures*

**wildearth-travel.com**

**info@wildearth-travel.com**

## PRICING

### 17-Jun-2025 to 03-Jul-2025

Vista	19500 AUD pp
Medallion	32600 AUD pp
Silver	35100 AUD pp
Royal 1 Bedroom	38000 AUD pp
Grand 1 Bedroom	41100 AUD pp
Owner 1 Bedroom	44400 AUD pp
Royal 2 Bedroom	58300 AUD pp
Grand 2 Bedroom	61400 AUD pp
Owner 2 Bedroom	62000 AUD pp
Veranda	0 pp
Midship Veranda	0 pp

### 01-Jul-2025 to 17-Jul-2025

Vista	19500 AUD pp
Medallion	32600 AUD pp
Silver	35100 AUD pp
Royal 1 Bedroom	38000 AUD pp
Grand 1 Bedroom	41100 AUD pp
Owner 1 Bedroom	44400 AUD pp
Royal 2 Bedroom	58300 AUD pp
Grand 2 Bedroom	61400 AUD pp
Owner 2 Bedroom	62000 AUD pp
Midship Veranda	0 pp
Veranda	0 pp

### 02-Aug-2025 to 18-Aug-2025

Vista	19500 AUD pp
Medallion	35100 AUD pp
Silver	38000 AUD pp
Royal 1 Bedroom	41100 AUD pp
Grand 1 Bedroom	44500 AUD pp
Owner 1 Bedroom	48100 AUD pp
Royal 2 Bedroom	61400 AUD pp
Grand 2 Bedroom	64800 AUD pp
Owner 2 Bedroom	65700 AUD pp
Midship Veranda	0 pp
Veranda	0 pp

Wild Earth Travel  
*Small Ships, Big Adventures*

**0800 945 3327** (within New Zealand) | +64 (0) 3 365 1355 | **1800 107 715** (within Australia)

info@wildearth-travel.com | wildearth-travel.com

# Wild Earth Travel

*Small Ships, Big Adventures*

**wildearth-travel.com**

**info@wildearth-travel.com**

## PRICING

### 16-Aug-2025 to 01-Sep-2025

Vista	20000 AUD pp
Medallion	35600 AUD pp
Silver	38400 AUD pp
Royal 1 Bedroom	40000 AUD pp
Grand 1 Bedroom	41700 AUD pp
Owner 1 Bedroom	43300 AUD pp
Royal 2 Bedroom	60700 AUD pp
Owner 2 Bedroom	61300 AUD pp
Grand 2 Bedroom	62400 AUD pp
Midship Veranda	0 pp
Veranda	0 pp

### 30-Aug-2025 to 15-Sep-2025

Vista	20000 AUD pp
Medallion	35600 AUD pp
Silver	36700 AUD pp
Royal 1 Bedroom	40000 AUD pp
Grand 1 Bedroom	43300 AUD pp
Owner 1 Bedroom	46700 AUD pp
Royal 2 Bedroom	60700 AUD pp
Grand 2 Bedroom	64000 AUD pp
Owner 2 Bedroom	64700 AUD pp
Veranda	0 pp
Midship Veranda	0 pp

Wild Earth Travel  
*Small Ships, Big Adventures*

**0800 945 3327** (within New Zealand) | +64 (0) 3 365 1355 | **1800 107 715** (within Australia)

info@wildearth-travel.com | wildearth-travel.com