



16 DAYS LUXURY GREENLAND EXPEDITION - REYKJAVIK TO NUUK

The glories of Greenland call you to adventure in a kingdom of extraordinary ice caps, creeping glaciers and scenic fjords. Spend 13 days aboard the Silver Spirit, immersed in the remote culture and extraordinary scale and beauty of Greenland. Embark on Zodiac adventures, seeking out whales gasping for air as they breach, and vast seabird colonies. Join Silversea's expert team on treks revealing the secrets of these magical lands. Greenland's icy wonders await!



ITINERARY

Days 0 - 1 - Pre Cruise & Reykjavik

- _ ****Pre Cruise Benefits**** _
- _ ****Private Executive Transfers**** _
- _ ****International flights - Economy class**** _
- _ ****or Business Class upgrade**** _
- _ ****Airport transfers**** _



Wild Earth Travel

Small Ships, Big Adventures

wildearth-travel.com

info@wildearth-travel.com

The capital of Iceland's land of ice, fire and natural wonder, Reykjavik is a city like no other - blossoming among some of the world's most vibrant and violent scenery. Home to two-thirds of Iceland's population, Reykjavik is the island's only real city, and a welcoming and walkable place - full of bicycles gliding along boulevards or battling the wind when it rears up. Fresh licks of paint brighten the streets, and an artistic and creative atmosphere embraces studios and galleries - as well as the kitchens where an exciting culinary scene is burgeoning. Plot your adventures in the city's hip bars and cosy cafes, or waste no time in venturing out to Iceland's outdoor adventures. Reykjavik's buildings stand together - below the whip of winter's winds - together with the magnificent Hallgrímskirkja church, with its bell tower rising resolutely over the city. Iceland's largest church's design echoes the lava flows that have shaped this remote land and boasts a clean and elegant interior. The Harpa Concert Hall's sheer glass facade helps it to assimilate into the landscape, mirroring back the city and harbour. Its LED lights shimmer in honour of Iceland's greatest illuminated performance - the northern lights. Walk in the crusts between continents, feel the spray from bursts of geysers and witness the enduring power of Iceland's massive waterfalls. Whether you want to sizzle away in the earth-heated geothermal pools, or hike to your heart's content, you can do it all from Reykjavik - the colourful capital of this astonishing outdoor country.

Day 2 - Vestmannaeyjar

The name Vestmannaeyjar refers to both a town and an archipelago off the south coast of Iceland. The largest Vestmannaeyjar island is called Heimaey. It is the only inhabited island in the group and is home to over 4000 people. The eruption of the Eldfell Volcano put Vestmannaeyjar into the international lime light in 1973. The volcano's eruption destroyed many buildings and forced an evacuation of the residents to mainland Iceland. The lava flow was stopped in its tracks by the application of billions of liters of cold sea water. Since the eruption, life on the small island outpost has returned to the natural ebb and flow of a small coastal fishing community on the edge of the chilly and wild North Atlantic.

Day 3 - Day at sea

Days at sea are the perfect opportunity to relax, unwind and catch up with what you've been meaning to do. So whether that is going to the gym, visiting the spa, whale watching, catching up on your reading or simply topping up

your tan, these blue sea days are the perfect balance to busy days spent exploring shore side.

Day 4 - Cruise Prince Christian Sound

The transit through the Sound is one of this voyage's highlights. Connecting the Labrador Sea with the Irminger Sea, Prince Christian Sound or "Prins Christian Sund" in Danish is named after Prince (later King) Christian VII (1749-1808). 100 km (60 miles), long and at times just 500 m (1500 ft) wide, this majestic and spectacular fiord throws you back into a Viking era - flanked by soaring snow-topped mountains, rock-strewn cliffs and rolling hills, it is as if time has stood still and one easily forgets that this is the 21st century. As you marvel at the sheer size of the mountains that surround you, with the Arctic waters lapping deceptively at the hull, revel in the silence enveloping you. Icebergs float serenely by, carrying with them the ages of time. Be sure to wear warm clothing as this is one spectacle that you do not want to miss.

Day 5 - Tassemiut Fjord

Considered one of the Ten Wonders of the Arctic, Tassemiut Fjord is a 70-kilometre (44 mile) incision into the pristine wilderness of south-western Greenland. The fjord is entered near the settlement of Nanortalik (population 1200) and winds its way through scenery that is reminiscent of the dramatic mountain landscape of Patagonia.

Cruising up the fjord by ship reveals a spectacular panorama of jagged peaks perched atop steep-sided mountains, interspersed with u-shaped side valleys and moraines - all clear indications of glacial action. The lower slopes are green with lush vegetation but quickly rise to barren walls of rock. These sheer walls make Tassemiut Fjord a Mecca for rock climbers, who rate such climbs as Uiluit Qaaqa (Ketil), Ulaertorsuaq (Uli) and The Baroness as being some of the best in the world. For the less active among us, just processing and comprehending the vista itself seems challenging enough.

The Tassemiut Fjord region has always attracted people. Inuit made hunting camps around the fjord mouth to target the ringed, harp and bearded seals that are abundant when the pack ice drifts in. The Norse too, settled the area in the 10th century, drawn no doubt to the valleys that promised fertile grazing for their precious livestock. They were also perhaps drawn to the astounding natural beauty of the region, as if it was blessed by divine hand, something that is readily apparent to the eager traveller that makes it to this little-explored corner of Greenland.

Wild Earth Travel
Small Ships, Big Adventures

0800 945 3327 (within New Zealand) | +64 (0) 3 365 1355 | **1800 107 715** (within Australia)

info@wildearth-travel.com | **wildearth-travel.com**



Wild Earth Travel

Small Ships, Big Adventures

wildearth-travel.com

info@wildearth-travel.com

Day 6 - Qaqortoq (Julianehåb)

The largest town in southern Greenland, Qaqortoq has been inhabited since prehistoric times. Upon arrival in this charming southern Greenland enclave, it's easy to see why. Qaqortoq rises quite steeply over the fjord system around the city, offering breath-taking panoramic vistas of the surrounding mountains, deep, blue sea, Lake Tasersuag, icebergs in the bay, and pastoral backcountry. Although the earliest signs of ancient civilization in Qaqortoq date back 4,300 years, Qaqortoq is known to have been inhabited by Norse and Inuit settlers in the 10th and 12th centuries, and the present-day town was founded in 1774. In the years since, Qaqortoq has evolved into a seaport and trading hub for fish and shrimp processing, tanning, fur production, and ship maintenance and repair.

Day 6 - Hvalsey

18 kilometers northeast of Qaqortoq, Hvalsey is part of Qaqortukuloq, one of the five sites of the UNESCO World Heritage Arctic farming complex Kujataa. Between Eriksfjord to the north and Einarsfjord to the south, the Hvalseyfjord branches off from Einarsfjord. Although Hvalsey is better known for the well-preserved ruins of one of the sixteen churches in the Norse's Eastern Settlement, the church was in a farmstead known as Thjodhild's Stead. This farmstead at the northeastern end of the fjord included a large building with living quarters, a hall and livestock pens, as well as other livestock pens, a storage building and a warehouse -the ruins of which can still be seen. The Norse farming laid the foundation for the Inuit farming in later centuries, leading to the UNESCO World Heritage status in 2017. In the 14th century account "Descriptions of Greenland" the abundant fish, a reindeer farm on Reindeer Island and Hvalsey's name "Whale Island" clearly indicate that the Norse had ample food sources at that time. The church was built in the Anglo-Norwegian style of the 13th century, but is known to have been built over an older graveyard. The farmstead is mentioned in the Icelandic "Book of Settlements" as property of the Kings of Norway, and the last documented event of the Norse in Greenland is a wedding which took place in the church in September 1408. After almost 600 years of abandonment, conservation work had to be done to prevent the seaward wall from collapsing.

Day 7 - Kvanefjord

Day 8 - Maniitsoq

Located in the central part of Greenland's western coast, Maniitsoq is Greenland's sixth-largest town, and home to less than 2700 inhabitants. The main attractions are the small museum and old cemetery at the northern end of town. At the community hall local artist and artisans usually exhibit some of their carvings and beadwork. The beadwork pieces are not created just as souvenirs for visitors -- the national dress of the West-Greenlandic women uses an elaborately beaded collar. Fishing trips and even heli-skiing on nearby mountains are considered Maniitsoq's other assets. Its local name (meaning 'place of rugged terrain') contrasts somewhat with the name given by the Danish in 1782 ('New Sugarloaf').

Day 9 - Kuannit Point & Itilleq, Disko Island

Day 10 - Eqip Sermia Glacier

Day 11 - Ilulissat

Known as the birthplace of icebergs, the Ilulissat Icefjord produces nearly 20 million tons of ice each day. In fact, the word Ilulissat means "icebergs" in the Kalaallisut language. The town of Ilulissat is known for its long periods of calm and settled weather, but the climate tends to be cold due to its proximity to the fjord. Approximately 4,500 people live in Ilulissat, the third-largest town in Greenland after Nuuk and Sisimiut. Some people here estimate that there are nearly as many sled dogs as human beings living in the town that also boasts a local history museum located in the former home of Greenlandic folk hero and famed polar explorer Knud Rasmussen.

Day 12 - Sisimiut

Sisimiut ('The People of the Fox Holes') is Greenland's second city, the largest Arctic City in North America, and a hub between the warmer South and the frozen North of the country. With a young, dynamic population, including students from all over the country, Sisimiut is one of the fastest growing cities in Greenland. Inhabited for more than four and a half thousand years, the Danish Colonial Era saw the rapid development of the city into a trade centre, and the old buildings and artefacts can be seen at Sisimiut Museum, a collection of beautifully restored buildings displaying everything from ancient turf houses to modern Inuit art. The local artisans are considered some of the

Wild Earth Travel
Small Ships, Big Adventures

0800 945 3327 (within New Zealand) | +64 (0) 3 365 1355 | **1800 107 715** (within Australia)

info@wildearth-travel.com | wildearth-travel.com



Wild Earth Travel

Small Ships, Big Adventures

wildearth-travel.com

info@wildearth-travel.com

best in Greenland, and often sell their wares direct from their communal workshop in the harbour, where they barter with hunters for raw materials. Today, modern industry focussed on processing sea food and shipping; KNI, the state-run chain of general stores operating in even the most remote settlements is based in Sisimiut. Most residents still live in the colourful wooden houses Greenland is so well known for. Sisimiut's vast back country offers excellent opportunities for hiking and fishing, and the locals often use sled dogs or snowmobiles to get around their vast mountainous playground during the long winters. In the summer, one can walk as far as Kangerlussuaq International Airport, a trail also used for the gruelling Polar Circle Marathon, one of the toughest endurance events in the world.

Day 12 - Amerloq Fjord

Sail into Amerloq Fjord, an evocative waterway, immersed in a protected landscape of soaring mountains, arctic wilderness and deep fjords. Located in western Greenland's Qeqqata municipality, this scenic fjord lies above the Arctic Circle, with its waters flowing out into the Davis Strait. Along the rocky shores, hiking trails meander by the water's edge, and whales can occasionally be spotted in the calm waters. Huddled over the fjord's entrance is the cheerily painted town of Sisimiut, Greenland's second largest settlement. While cruising along 25 miles of fjord waters, you'll also encounter Assaqtuaq - a ghostly village that was abandoned and left to ruin in 1970. Some of the fading wooden buildings have recently had new life breathed into them for educational purposes. Sail the calm waters to reach Sarfannguit, a beautiful fishing village consisting of an assortment of small wooden houses popping with bright colours against the moody landscape. Located on an island between two fjords, Sarfannguit forms part of a UNESCO World Heritage Site, designated in 2018 to preserve the cultural and historical legacy of the Inuit. For more than 4,200 years, the Inuit have hunted and fished in these landscapes, maintaining a deep connection to the land and sea. Today, you can visit the approximately 100 residents who live in Sarfannguit to learn of their heritage, as the barks of their excited sled dogs echo over the waters.

Day 13 - Evighedsfjord

Evighedsfjord (Eternity Fjord) is a large fjord northeast of Kangaamiut in southwest Greenland. The fjord has a length of 75 kilometers and several branches with numerous glaciers coming down from the Maniitsoq Ice Cap to the north can be seen. The Evighedsfjord has several bends and whenever the ship reaches the supposed end the fjord continues in another direction and seems to go on forever. Qingua Kujatdleq Glacier is at its southeastern end. At

the northwestern end a U-shaped valley has seven glaciers coming down from the mountains but not reaching the water. The glaciers had their maximum extent around the year 1870 and have gone through several cycles of advance and retreat. The mountains on either side of the fjord can reach in excess of 2,000 meters and the fjord has a depth of up to 700 meters. Evighedsfjord's snowline is at 1,100 meters and the Evighedsfjord region is famous as one of Greenland's best heli-skiing areas.

Day 14 - Nuuk (Godthab)

In the bustling capital city of Greenland, you could be forgiven for forgetting you are in such a vast and isolated country. Nuuk is Greenland's economic and social hub, home to more than a third of Greenland's population, and although it feels like a world capital, scratch the surface, and a uniquely Greenlandic character can be found underneath. Nuuk Cathedral overlooks the gorgeous old Colonial Harbour district and the Greenland National Museum, resting place of the legendary Qilakitsoq mummies, the true highlight of the museum's archaeological collection. Above the Colonial Harbour sits downtown Nuuk, with lines of Scandistyle apartments, a bustling shopping district, the Greenlandic Parliament, Nuuk City Hall (which welcomes visitors to see its artwork) and even outdoor cafes selling locally produced food and beer. These nods to modernity compete for space with local artisan boutiques, the meat market selling the catch from Nuuk's vast fjord-lands, and the stunning Katuaq Cultural Centre, where blockbuster movies, as well as local and foreign performers entertain the people of Nuuk. Although Nuuk has long been a melting pot of Danish and Greenlandic ideas, this is a city where Greenland displays its sophistication, with the Country's only traffic lights, roundabouts and University. Most of all, expect to find a multitude of friendly people who are proud of who they are, and equally proud of the city they call home.

Day 15 - Post Cruise

_ **Post Cruise Benefits** _
_ **Charter/Group flights** _
_ **Hotel** _
_ **Airport transfers** _
_ **International flights - Economy class** _
_ **or Business Class upgrade** _
_ **Private Executive Transfers** _

Wild Earth Travel
Small Ships, Big Adventures

0800 945 3327 (within New Zealand) | +64 (0) 3 365 1355 | **1800 107 715** (within Australia)

info@wildearth-travel.com | **wildearth-travel.com**



Wild Earth Travel
Small Ships, Big Adventures

wildearth-travel.com **info@wildearth-travel.com**

Please note:

Itineraries are subject to change.

Wild Earth Travel
Small Ships, Big Adventures

0800 945 3327 (within New Zealand) | +64 (0) 3 365 1355 | **1800 107 715** (within Australia)
info@wildearth-travel.com | **wildearth-travel.com**

Wild Earth Travel

Small Ships, Big Adventures

wildearth-travel.com

info@wildearth-travel.com

YOUR SHIP: SILVER WIND

YOUR SHIP:	Silver Wind
VESSEL TYPE:	Small Luxury Cruise Ship
LENGTH:	156.7 metres
PASSENGER CAPACITY:	274
BUILT/REFURBISHED:	1995 / Refurbished

A major upgrade in December 2018 saw Silver Wind looking better than ever. A second refurbishment in summer 2021 will see her benefitting from a strengthened to ice-class hull and will make her one of the most adaptable ships in our fleet. Still timelessly elegant, still luxuriously relaxed, her improved cruising versatility means she is able to whizz from the Polar Regions at the ends of the earth to the iconic ports of the Mediterranean with fluid ease. So whether you want to get up close and personal to penguins in Antarctica or laze on the golden sands of the Caribbean, get ready for a wealth of diverse destination experiences, in traditional Silversea comfort.

Dining

The Grill. Soft breezes and ocean views beckon at the Grill, especially as the sun goes down when cruise guests gather for cocktails at the outdoor bar and talk about the day's events.

La Terrazza. Authentic Italian recipes and the freshest, sustainable ingredients come together in this restaurant at sea.

The Restaurant. Enjoy Continental and regional specialities, as well as sweeping ocean views in our main dining room.

La Dame. La Dame features a menu of seasonally inspired dishes prepared with the freshest locally sourced ingredients.

Public Areas

Pool Deck. Chaise lounges arranged in the sun or shade. Bubbling whirlpools. The pool water refreshing in warmer climates, heated for cooler weather.

Reception. Be sure to visit the Reception area, where our experts can provide invaluable information to help you get the most out of your cruise.

Fitness Centre. The Fitness Centre offers world-class equipment, classes, and personalized services.

Connoisseur's Corner. If you appreciate good cognac or premium cigars, be sure to visit the Connoisseur's Corner to see the ship's exceptional selection.

Boutique. There is a wealth of luxury shopping experiences aboard all Silversea ships, featuring the most distinctive and appealing brands from across the globe.

The Show Lounge. Applaud a broad spectrum of entertainment -- from full-scale production shows and classical soloists, to cultural entertainment and feature films.

Panorama Lounge. Relax and unwind in the Panorama Lounge, a sophisticated yet amicable space offering beautiful ocean views as you enjoy your cruise.

Zagara Beauty Spa. Come and indulge in a luxurious spa treatment. Facials, body wraps, massages: the spa is the perfect place to unwind.

Dolce Vita. Dolce Vita is the gathering place for our savvy travellers of the world, a place where guests mingle and exchange stories and where new faces become lifelong friends.

Zagara Beauty Salon. Maintain your fresh look throughout your

Wild Earth Travel

Small Ships, Big Adventures

0800 945 3327 (within New Zealand) | +64 (0) 3 365 1355 | **1800 107 715** (within Australia)

info@wildearth-travel.com | wildearth-travel.com



Wild Earth Travel

Small Ships, Big Adventures

wildearth-travel.com

info@wildearth-travel.com

luxury cruise at the Zagara Beauty Salon. Services are available for men and women.

Observation Library. The Observation Library boasts exceptional views overlooking the ocean as it stretches out below you while you enjoy your cruise.

Photo Studio. The Photo Studio offers a professional space for budding photographers to retouch, print and display their work.



their work.



0800 945 3327 (within New Zealand) | +64 (0) 3 365 1355 | **1800 107 715** (within Australia)

info@wildearth-travel.com | **wildearth-travel.com**

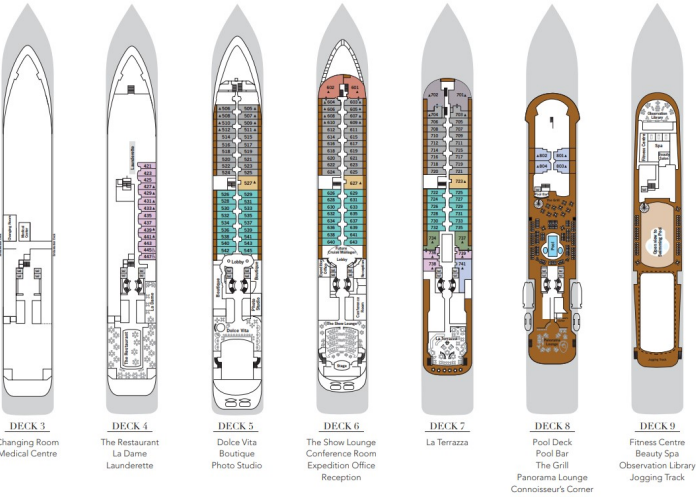


Wild Earth Travel
Small Ships, Big Adventures

wildearth-travel.com

info@wildearth-travel.com

INSIDE YOUR SHIP



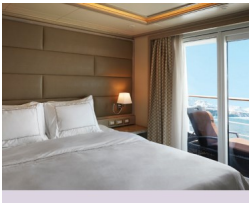
Grand 1 Bedroom



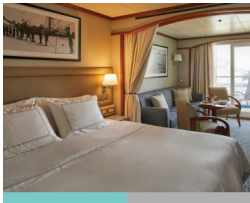
Grand 2 Bedroom



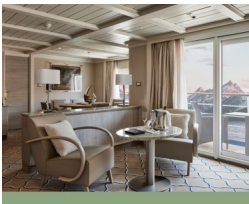
Medallion



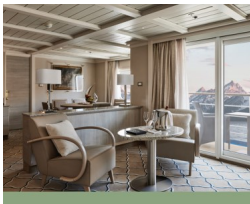
Midship Veranda



Owner 1 Bedroom



Owner 2 Bedroom



Wild Earth Travel
Small Ships, Big Adventures

0800 945 3327 (within New Zealand) | +64 (0) 3 365 1355 | **1800 107 715** (within Australia)

info@wildearth-travel.com | wildearth-travel.com

Wild Earth Travel

Small Ships, Big Adventures

wildearth-travel.com

info@wildearth-travel.com

PRICING

17-Jun-2026 to 02-Jul-2026

Vista	25600 AUD pp
Medallion	40700 AUD pp
Silver	45500 AUD pp
Royal 1 Bedroom	59300 AUD pp
Grand 1 Bedroom	67500 AUD pp
Royal 2 Bedroom	114800 AUD pp
Owner 1 Bedroom	81800 AUD pp
Grand 2 Bedroom	120500 AUD pp
Owner 2 Bedroom	125800 AUD pp
Midship Veranda	0 pp
Veranda	0 pp

30-Jun-2026 to 15-Jul-2026

Vista	27500 AUD pp
Medallion	43200 AUD pp
Silver	48500 AUD pp
Royal 1 Bedroom	59800 AUD pp
Grand 1 Bedroom	68000 AUD pp
Owner 1 Bedroom	82300 AUD pp
Royal 2 Bedroom	114800 AUD pp
Grand 2 Bedroom	120500 AUD pp
Owner 2 Bedroom	125800 AUD pp
Veranda	0 pp
Midship Veranda	0 pp