



wildearth-travel.com

info@wildearth-travel.com

16 DAYS ARCTIC & CANADA LUXURY EXPEDITION - IQALUIT TO BOSTON MASSACHUSETTS

Explore soaring mountain valleys, remote communities, and wildlife sanctuaries during 13 unforgettable days cruising Baffin Island and Newfoundland. Access secluded locations and iconic wildlife - keep watch for the 'Kings of the North', powerful polar bears, and breaching humpback whales. Continue your adventure in luxurious comfort, travelling to charming Nova Scotia towns via UNESCO celebrated national parks, dramatic fjords, and spectacular bays.



ITINERARY

Days 0 - 1 - Pre Cruise & Iqaluit (Nunavut)

- _ ****Pre Cruise Benefits**** _
- _ ****Private Executive Transfers**** _
- _ ****International flights - Economy class**** _
- _ ****or Business Class upgrade**** _
- _ ****Airport transfers**** _
- _ ****Hotel**** _
- _ ****Charter/Group flights**** _

Iqaluit is the capital of Canada's newest territory, Nunavut, which is Inuktitut for "our land". The community is located at the head of Frobisher Bay, an inlet of the North Atlantic extending into southeastern Baffin Island. The Bay is so long that it was first taken to be the possible entrance of a Northwest Passage. In Iqaluit, the Nunatta Sunakkutaangit Museum and the Nunavut Legislative Assembly Building both house incredible collections of Inuit artwork with interesting local prints for sale in the museum shop.

Day 2 - Lady Franklin Island



Wild Earth Travel

Small Ships, Big Adventures

wildearth-travel.com

info@wildearth-travel.com

Day 5 - Nachvak Fjord, Torngat National Park

Named in honour of Sir John Franklin's widow, the lonely and uninhabited Lady Franklin Island lies off of Baffin Island's Hall Peninsula at the entrance to Cumberland Sound. The island is named for the wife of Sir John Franklin, the Arctic explorer who died trying to discover the Northwest Passage. The geology of the island is striking with vertical cliffs of Archean rocks, likely to be some of the oldest stone in Canada. The waters around Lady Franklin Island offer an abundance seabirds, ducks, seals, and walrus. With a bit of luck it is possible to see Atlantic Puffins here and perhaps even a rare Sabine's Gull.

Day 2 - Monumental Island

Monumental Island is a splinter of ancient metamorphic rock, hunching in the frigid waters of the Davis Strait, defying the ocean and ice around it. Named to honour the legendary Polar Explorer Sir John Franklin, the island displays at times displays everything Nunavut has to offer, in an ocean studded with vast icebergs drifting across from Greenland. Monumental Island is a well known den site for polar bears, the icon of the Arctic; there is a good chance to see mother bears with cubs on the island, as the bears become trapped by the lack of summer ice, using the island as a base to hunt until the ice returns in the Autumn. Seeing the white silhouette of a polar bear against the ancient black rock and autumn tundra colours is an experience that will remain long after returning on board. Groups of harp seals are a common sight in the waters around Monumental Island, and can be very curious, often swimming very close to investigate new objects such as boats. There are several sites on the island also used as haul out sites for the charismatic Atlantic Walrus. These vast animals are surprisingly gentle and skittish, and can often be observed caring for their calves on the rock bluffs while keeping a careful watch for polar bears. Almost nowhere else in Nunavut can the charismatic wildlife of the Arctic be observed in such a stunning setting.

Day 3 - Lower Savage Islands

The Lower Savage Islands are a small group of islands off of the southeastern tip of Baffin Island, and a common location for polar bears to be found during the summer months. With plenty of land to roam while giving each other a wide berth, plus opportunities to feed, it seems perhaps bears can be found here as the ice vanishes with the summer season's warming temperatures.

Day 4 - Akpatok Island - North

Sail along Nachvak Fjord, into the wild, remote, and untamed Torngat Mountains National Park - a place of deep spiritual significance and monumental mountain scenery. This dramatic national park encompasses striking fjords of the Labrador coast, including Nachvak Fjord, which stretches inland for 13 miles before splitting into two arms. Towering slopes rise abruptly from the water's edge to the raw, majestic heights of some of mainland Canada's most impressive peaks. Part of the Quebec-Labrador Peninsula, these mountains are among the tallest in mainland Canada. The Torngat Mountains are also home to some of the world's oldest rocks, dated to an astonishing 3.9 billion years old. You can almost feel the power of the elemental forces that shaped these ancient lands and waters in your bones as you explore. As part of Inuit Nunangat - the homeland of the Inuit people - these sacred mountains hold immense spiritual significance, with their name derived from the Inuktitut word meaning 'Place of Spirits'. Explore the stunning Nachvak Fjord and surrounding wilderness, where Labrador's famously hardy wildlife roams freely. Cruise the waters in Zodiacs, looking out for close encounters with nature, and hiking along the scenic fjord arms. Keep an eye out during these excursions for potential opportunities to spot iconic wildlife such as polar bears, black bears, and Arctic foxes. A variety of marine species also visit the coastal and fjord waters including whales and seals.

Day 6 - Saglek Bay, Torngat National Park

Monumental cliffs and perfectly sculpted U-shaped valleys - there's no doubting the power of the elemental forces that have shaped Saglek Bay. This scenic inlet invites you to explore dramatic mountain vistas and search for the elusive northerly wildlife of Labrador and Newfoundland. Saglek Bay is a gateway to the Torngat Mountains National Park, a vast and remote wilderness of soaring fjords, rugged peaks and profound Inuit heritage. Dotted across the bay's waters are a series of islands including Branagin Island, Jens Haven Island, and Handy Island, where seabirds call out across the sparse tundra. These islands hold deep cultural significance for the Inuit people, and Rose Island in particular is a location of historical burial sites and Inuit graves. Zodiac through the icy waters to get close to towering icebergs and dramatic cliff faces, keeping an eye out for extraordinary wildlife along the way. Once ashore, guided hikes through the bay's rugged terrain provide an incredible immersion in the stunning scenery and isolated scene. With the expert guidance of Silversea's expedition team, stay alert for potential wildlife encounters - you may spot polar bears, black bears, and caribou, and, if you're very lucky, perhaps even the elusive Labrador wolf.

Wild Earth Travel
Small Ships, Big Adventures

0800 945 3327 (within New Zealand) | +64 (0) 3 365 1355 | **1800 107 715** (within Australia)

info@wildearth-travel.com | **wildearth-travel.com**



Wild Earth Travel

Small Ships, Big Adventures

wildearth-travel.com

info@wildearth-travel.com

Day 7 - Hebron Fjord

Sail into the fractured shores of the Labrador coast, embracing the striking beauty of Hebron Fjord. Located in northern Arctic Labrador, the fjord is one of the region's largest, extending inland for an impressive 28 miles. At its mouth lies Hebron, a former Moravian missionary and Inuit community that has been carefully restored as a National Historic Site, offering a moving glimpse into the rich and poignant history of the location, scarred by its controversial closure in 1959 without consultation with the communities. The far-flung, remote beauty of the fjord provides a true adventure as you explore this part of the Inuit homeland, nestled just south of the towering peaks and snow-capped heights of the Torngat Mountains. On the waters, navigate past immense, drifting chunks of ice and keep your eyes peeled for potential encounters with polar bears, seals, beluga whales and diverse bird species - our expert expedition team is always on hand to spot opportunities for viewings and expeditions. From Zodiacs on water level, the scale of the fjord-sides and the colours of the tundra and vegetation painted shores are evocatively beautiful. For a different perspective, hiking trails along the cliffs offer breathtaking panoramic views of the U-shaped valley. Standing over Hebron Fjord feels like standing on the top of the world, with the dramatic, curved fjord-sides plunging steeply into the still, glassy waters below.

Day 8 - Hopedale

Day 9 - Red Bay, Labrador

Red Bay gets its name from the red granite cliffs of Labrador's south coast. Red Bay is a fishing village and home to an important Basque whaling station dating back to the mid-16th to early 18th century. Considered home of the first large-scale whale oil production in the world, Red Bay was declared a UNESCO World Heritage Site in 2013. It is also an important underwater archaeological site with the discovery of three Basque whaling galleons, four small chalupas (sloops) used in the capture of whales, and a small boat once used to harpoon whales.

Day 10 - Woody Point, Newfoundland

Acclaimed for its unearthly landscape, Woody Point is probably as close to Mars as you will ever get in this lifetime. Situated on the west coast of the

island, the Tablelands behind Woody Point in the Gros Morne National Park are composed of peridotite -- like much of the surface of Mars -- and NASA, the Canadian Space Agency, plus others are studying this unique land form searching for insights into possible bacterial life on the red planet. The story of the Tablelands earned Gros Morne its World Heritage Site status from UNESCO in 2010, and the area remains a geological wonder, showcasing a time when the continents of Africa and North America collided. When the plates struck 485 million years ago, the peridotite was pushed to the surface, and remained above sea level. The rock lacks the nutrients to sustain plant life, thus giving the Tablelands a barren, isolated appearance. As the name suggests, the flat topped mountains dwarf the tiny village (population 281!), yet Woody Point has retained its character and the historic houses and buildings dating from 1870 have been beautifully maintained.

Day 11 - Day at sea

Days at sea are the perfect opportunity to relax, unwind and catch up with what you've been meaning to do. So whether that is going to the gym, visiting the spa, whale watching, catching up on your reading or simply topping up your tan, these blue sea days are the perfect balance to busy days spent exploring shore side.

Day 12 - Yarmouth, Nova Scotia

Yarmouth is a charming little town situated in southwestern Nova Scotia. Surrounded by the Atlantic Ocean, you come here to find tranquility, away from the crowds of other more famous and busy areas of the province such as Cape Breton or Wolfville. If you are looking for cozy cafes, beaches where to breathe, deserted paths, in short if you are looking for a real holiday to disconnect, head to Yarmouth and the Acadian coast.

The port town lives through fishing and tourism since a very long time. The French Acadians were the first ones to settle, explaining the coast's name. That's during the Seven Years' War that Yarmouth got its name. New England Planters settled and called Yarmouth after their hometown in Massachusetts. Through the 19th century, the town used to be a major shipbuilding centre. Boats and ships that contributed to the expansion of tourism, notably with the Yarmouth Steamship Company linking the town to New York City and Boston.

Strolling through Yarmouth's streets, you'll surely come across beautiful and colourful Victorian houses. You won't miss the 'triplets' on the main street. A famous house is hiding among these colourful houses, the Pelton-Fuller house.

Wild Earth Travel
Small Ships, Big Adventures

0800 945 3327 (within New Zealand) | +64 (0) 3 365 1355 | **1800 107 715** (within Australia)

info@wildearth-travel.com | **wildearth-travel.com**



wildearth-travel.com

info@wildearth-travel.com

This Italianate-style construction, which you can visit, used to be the summer home of Alfred C. Fuller, the original "Fuller Bush Man". If you're looking for more museums, Yarmouth has some! The award-winning Yarmouth County Museum and Archives, which retraces the town's history, the Firefighters' Museum of Nova Scotia too. If you're looking for some art, then the Yarmouth Waterfront Gallery is a coop gallery with over 30 regional artists exposing their paintings, photographs, prints, jewellery, carving and fibre art.

Day 13 - Grand Manan, New Brunswick

Grand Manan Island, located in the world famous Bay of Fundy, is the largest of the Fundy islands, but is only 21 miles long and 11 miles wide at its widest point. Almost all the residents live on the eastern side of the island, since the western side has huge 300 foot cliffs and high winds. Reader's Digest Magazine voted Grand Manan as one of the World's 7 Best Small Islands because of its friendly people, scenic beauty and serenity. It is also a recognized world-wide as a North American birding hot spot. Ever since James John Audubon visited in 1833, birders have been coming to find some of the over 240 species of birds that make the island their home. The waters surrounding the island are an important feeding area for a number of whale species, including minke, fins, humpback whales, and the rare North Atlantic right whale.

Day 14 - Boston Massachusetts

Historic yet revolutionary, few places embody the American dream quite as well as Boston - and you'll feel the strong independent streak, and pride in the founding ideals of freedom and independence wherever you go. Skyscrapers mingle harmoniously with cobbled streets, and every footstep here promises new tales of legend, daring and valour, as you walk through the pages of history and immerse yourself in the stories of one of the USA's oldest cities. The flashing colours of Fall - a period when the foliage around Boston explodes with blazes of red, orange and purple - attract visitors from across the world, more than compensating for the northerly city's harsh winters. Green open spaces like Boston Public Garden also decorate the city, offering breathing space, and the chance to enjoy blossom-perfumed sanctuary, as you sit among scampering squirrels and quiet boating lakes. At times, Boston feels like an open-air history museum, and the Freedom Trail links together the city's many valuable historic sites. It's no exaggeration to say that the world's history pivoted significantly on this humble two-and-a-half-mile trail. Wander across incendiary sites like the Boston Massacre Site, and Bunker Hill - where the first shots of the American Revolutionary War were fired, eventually leading to

independence from British rule. Fenway Park is the cathedral-like home of Boston's famous Red Sox, and a must visit for any sports fan. You'll also find plenty of acclaimed New England seafood to sample, including famous buttery clam chowder. Restaurants in the thriving Seaport District serve up freshly harvested crab and lobster, accompanied by spectacular views of the crashing Atlantic waves.

Day 15 - Post Cruise

__ **Post Cruise Benefits** __
__ **Airport transfers** __
__ **International flights - Economy class** __
__ **or Business Class upgrade** __
__ **Private Executive Transfers** __

Please note:

Itineraries are subject to change.



Wild Earth Travel

Small Ships, Big Adventures

wildearth-travel.com

info@wildearth-travel.com

YOUR SHIP: SILVER WIND

YOUR SHIP:	Silver Wind
VESSEL TYPE:	Small Luxury Cruise Ship
LENGTH:	156.7 metres
PASSENGER CAPACITY:	274
BUILT/REFURBISHED:	1995 / Refurbished

A major upgrade in December 2018 saw Silver Wind looking better than ever. A second refurbishment in summer 2021 will see her benefitting from a strengthened to ice-class hull and will make her one of the most adaptable ships in our fleet. Still timelessly elegant, still luxuriously relaxed, her improved cruising versatility means she is able to whizz from the Polar Regions at the ends of the earth to the iconic ports of the Mediterranean with fluid ease. So whether you want to get up close and personal to penguins in Antarctica or laze on the golden sands of the Caribbean, get ready for a wealth of diverse destination experiences, in traditional Silversea comfort.

Dining

The Grill. Soft breezes and ocean views beckon at the Grill, especially as the sun goes down when cruise guests gather for cocktails at the outdoor bar and talk about the day's events.

La Terrazza. Authentic Italian recipes and the freshest, sustainable ingredients come together in this restaurant at sea.

The Restaurant. Enjoy Continental and regional specialities, as well as sweeping ocean views in our main dining room.

La Dame. La Dame features a menu of seasonally inspired dishes prepared with the freshest locally sourced ingredients.

Public Areas

Pool Deck. Chaise lounges arranged in the sun or shade. Bubbling whirlpools. The pool water refreshing in warmer climates, heated for cooler weather.

Reception. Be sure to visit the Reception area, where our experts can provide invaluable information to help you get the most out of your cruise.

Fitness Centre. The Fitness Centre offers world-class equipment, classes, and personalized services.

Connoisseur's Corner. If you appreciate good cognac or premium cigars, be sure to visit the Connoisseur's Corner to see the ship's exceptional selection.

Boutique. There is a wealth of luxury shopping experiences aboard all Silversea ships, featuring the most distinctive and appealing brands from across the globe.

The Show Lounge. Applaud a broad spectrum of entertainment -- from full-scale production shows and classical soloists, to cultural entertainment and feature films.

Panorama Lounge. Relax and unwind in the Panorama Lounge, a sophisticated yet amicable space offering beautiful ocean views as you enjoy your cruise.

Zagara Beauty Spa. Come and indulge in a luxurious spa treatment. Facials, body wraps, massages: the spa is the perfect place to unwind.

Dolce Vita. Dolce Vita is the gathering place for our savvy travellers of the world, a place where guests mingle and exchange stories and where new faces become lifelong friends.

Zagara Beauty Salon. Maintain your fresh look throughout your

Wild Earth Travel
Small Ships, Big Adventures

0800 945 3327 (within New Zealand) | +64 (0) 3 365 1355 | **1800 107 715** (within Australia)

info@wildearth-travel.com | wildearth-travel.com



Wild Earth Travel

Small Ships, Big Adventures

wildearth-travel.com

info@wildearth-travel.com

luxury cruise at the Zagara Beauty Salon. Services are available for men and women.

Observation Library. The Observation Library boasts exceptional views overlooking the ocean as it stretches out below you while you enjoy your cruise.

Photo Studio. The Photo Studio offers a professional space for budding photographers to retouch, print and display their work.



their work.

Wild Earth Travel
Small Ships, Big Adventures

0800 945 3327 (within New Zealand) | +64 (0) 3 365 1355 | **1800 107 715** (within Australia)

info@wildearth-travel.com | **wildearth-travel.com**

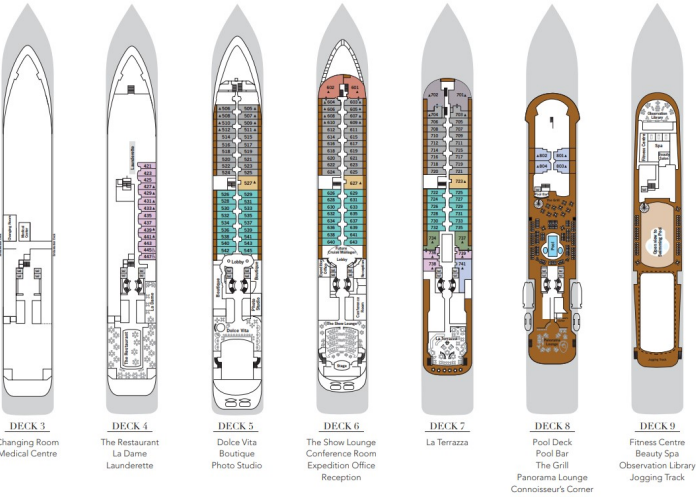


Wild Earth Travel
Small Ships, Big Adventures

wildearth-travel.com

info@wildearth-travel.com

INSIDE YOUR SHIP



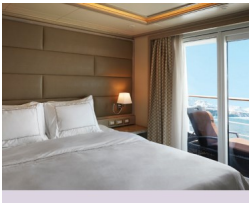
Grand 1 Bedroom



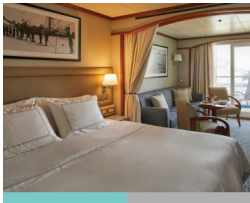
Grand 2 Bedroom



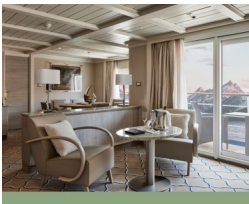
Medallion



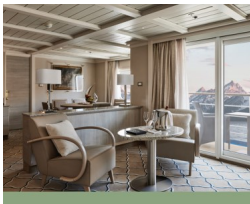
Midship Veranda



Owner 1 Bedroom



Owner 2 Bedroom



Wild Earth Travel
Small Ships, Big Adventures

0800 945 3327 (within New Zealand) | +64 (0) 3 365 1355 | **1800 107 715** (within Australia)

info@wildearth-travel.com | wildearth-travel.com



Wild Earth Travel
Small Ships, Big Adventures

wildearth-travel.com **info@wildearth-travel.com**

PRICING

12-Sep-2026 to 27-Sep-2026

Vista	27200 AUD pp
Medallion	44300 AUD pp
Silver	51300 AUD pp
Royal 1 Bedroom	63400 AUD pp
Grand 1 Bedroom	72300 AUD pp
Royal 2 Bedroom	114800 AUD pp
Owner 1 Bedroom	78500 AUD pp
Grand 2 Bedroom	120500 AUD pp
Owner 2 Bedroom	125800 AUD pp
Midship Veranda	0 pp
Veranda	0 pp

Wild Earth Travel
Small Ships, Big Adventures

0800 945 3327 (within New Zealand) | +64 (0) 3 365 1355 | **1800 107 715** (within Australia)

info@wildearth-travel.com | **wildearth-travel.com**