

Wild Earth Travel

Small Ships, Big Adventures

wildearth-travel.com

info@wildearth-travel.com

15 DAYS LUXURY AUSTRALIA & NEW ZEALAND CRUISE - MELBOURNE TO AUCKLAND

Join us as we explore Australia's stunning scenery and varied culture as we sail from Melbourne to Cairns. You'll start with a day at sea which takes you to Eden for whale spotting. Explore iconic Sydney then it's on to Brisbane and Mooloolaba via more onboard R&R.; Enjoy the beauty of K'gari before blue skies on Silver Nova and the picturesque Whitsunday Islands. Trips to Townsville, Cooktown and Port Douglas follow, before arrival in Cairns.



ITINERARY

Days 0 - 1 - Pre Cruise & Melbourne

- _ ****Pre Cruise Benefits**** _
- _ ****Private Executive Transfers**** _
- _ ****International flights - Economy class**** _
- _ ****or Business Class upgrade**** _
- _ ****Airport transfers**** _

Wild Earth Travel

Small Ships, Big Adventures

0800 945 3327 (within New Zealand) | +64 (0) 3 365 1355 | **1800 107 715** (within Australia)

info@wildearth-travel.com | **wildearth-travel.com**



Wild Earth Travel

Small Ships, Big Adventures

wildearth-travel.com

info@wildearth-travel.com

Australia's metropolitan cultural capital is a refined, contemporary and richly liveable city - which has a blend for every taste. The smells of freshly ground, artisan coffees fill the streets of this hip, youthful city, which is generously sprinkled with fine dining establishments, art galleries, and absorbing museums. With an airy outdoor lifestyle, Melbourne is a vibrant global hub of fashion, fun and festivities. Multicultural and diverse, Victoria's capital is crisscrossed by narrow alleys and splashed with street art. It's fair to say Melbourne's bearded baristas take their coffees seriously. Settle in to sample the unique coffee culture that is an essential part of Melbourne life. Looking for something a little stronger? The city's rooftop bars come alive with clinking cocktails as the sun sets. A world leader in culinary arts, take your seat at award-winning restaurants, and sample world foods alongside delicious wines, cultivated in the vineyards of the surrounding valleys. Savour a glass while cruising the arching Yarra River, for an unbeatable introduction to Melbourne. An outdoor city, it's no surprise that Melbourne is one of Australia's sporting giants. The vast bowl of Melbourne Cricket Ground serves as the city's sporting cathedral - squeezing in over 100,000 fans and hosting various sports on its hallowed, oval turf. Whether it's the rumble of hoofs during the Melbourne Cup, revs of engines during the Formula One, or thwacks of tennis balls during the Australian Open - few places can boast such a comprehensive list of high-profile sporting appeals.

Day 2 - Day at sea

Days at sea are the perfect opportunity to relax, unwind and catch up with what you've been meaning to do. So whether that is going to the gym, visiting the spa, whale watching, catching up on your reading or simply topping up your tan, these blue sea days are the perfect balance to busy days spent exploring shore side.

Days 3 - 4 - Hobart, Tasmania

Mount Wellington's looming, cloud-wisped form is an ever-present sight as you explore booming Hobart, the cosmopolitan capital of Australia's most southerly state. A former British penal colony, nowadays Australia's second-oldest city is a place to live the free and easy life. Encircled by dramatic cliffs, landscaped gardens and rolling vineyards, Hobart is also well stacked with cultural pursuits including museums, and respected - if controversial - galleries plastering new and old art to their walls. With fresh sea breezes and a fabulous location, Hobart is a creative place, where you can browse the produce of local artisans in Saturday's massive Salamanca Market - which draws visitors from all across

Tasmania and beyond. Eat at waterfront restaurants, or rise up Mount Wellington's slopes to appreciate the remoteness of Hobart's location. From this elevated platform, you can look down across views of flowing forests, undulating mountains and endless ocean swallowing up the city. Further away, animal sanctuaries introduce you to the island's famous inhabitants, including the famous Tasmanian devil. Thirsty? Hobart has a long brewing tradition - so enjoy a refreshing ale poured from the country's oldest brewery. The climate's blend of generous sunshine and cool Antarctic breezes helps Hobart to produce its acclaimed wines, and thick clumps of pinot noir grapes hang from vineyards dotted along the valleys nearby. Taste the wines, accompanied by a platter of artisan cheese and sausage. Whiskey aficionados aren't left in the cold either, with international award-winning distilleries close by.

Days 5 - 7 - Day at sea

Days at sea are the perfect opportunity to relax, unwind and catch up with what you've been meaning to do. So whether that is going to the gym, visiting the spa, whale watching, catching up on your reading or simply topping up your tan, these blue sea days are the perfect balance to busy days spent exploring shore side.

Day 8 - Dunedin (Port Chalmers)

The south-easterly coast of New Zealand's wild southern island is a haven for outdoor adventures, with masses of raw scenic beauty and thrilling coastline. Heading the Otago Harbour, Dunedin is a cosmopolitan city of culture and architectural splendour, with a distinctly tartan flare. Settled by the Scots in 1848, the romantically misty valleys and moody landscapes, continue to capture the hearts of visitors to these distant shores. Searing bagpipes echo down the streets in the Edinburgh of the South, which wears its Scottish origins proudly. Gothic revival architecture is scattered liberally, including the magnificent university - with its glorious clocktower - and the city's grand cathedral. Head to the elegant Octagon to see the statue to Robert Burns, whose nephew was a city founder. The railway station is perhaps the pick of this city's many artistic structures. Its glowing gardens and pretty mosaics add extra detail to the elegant, gingerbread building. It's also the perfect jumping-off point for romantic rail adventures along the coastline. The melodramatic coastline of the Otago Peninsula boasts dramatic cliffs and sea-sprayed beaches, as well as an abundance of animals. Explore cliffs laced with tunnels and hidden walkways, to get you up close and personal with Yellow-eyed penguins. Sea lions and seals also sprawl out on windswept beaches, drifting in and out of indulgent dozes. The south island's



Wild Earth Travel

Small Ships, Big Adventures

wildearth-travel.com

info@wildearth-travel.com

second-largest city regularly receives a top-up of youthful energy thanks to its healthy student population. Not that Dunedin is lacking a distinctly quirky personality of its own, as showcased by the event where locals race thousands of chocolate orbs down the world's steepest street - Baldwin Street. Museums in the city tell of Chinese influences, as well as the stories of early Maori settlers. Round off an active day sampling a South Island institution - an icy beer from Speight's Brewery.

Day 9 - Lyttelton (Christchurch)

New Zealand's 'Garden City' is a place of quiet streets, leafy parks and beautiful tree-lined boulevards. Christchurch has an unmistakable English flavour to it, and serves as the gateway to southern New Zealand's natural wonders. The rebuild of the country's oldest city continues apace - following the earthquakes that devastated it in 2011 - and the South Island's biggest city is now blossoming, having evolved into a confident and cultural powerhouse. Colourful street art adds an edge to the city, while shiny new bars and restaurants contribute to the sense of revitalisation and renewal. Visit museums, and take tours to learn more of the reconstruction, which has made incredible progress in recent years. The old-time charm of a punt on the River Avon is still a quintessential Christchurch experience. Sail amid weeping willows drooping to the water, as you drift through a blur of colours in the botanical gardens. Surrounded by extinct volcanoes, soaring lakes, and the rolling farmlands of the Canterbury Plains, spectacular scenery sprawls around the city. Pay a visit to the Southern Alps' snow-covered peaks, the stunning hot pools and rushing streams of Hanmer Springs, or the Hector's dolphins who swim at Akaroa. A city that has faced immense challenges - both natural and manmade - over the last decade, it's hard not to feel inspired by Christchurch's defiant character and friendly people, who share an open and welcoming outlook that shines stronger than ever.

Day 10 - Wellington

Sprawling around a hook-shaped peninsula, Wellington is a vibrant and energetic seaside capital. A compact, well-stocked city of buzzing bars and chatting cafes, New Zealand's capital is a bright and breezy place with an infectious, easy-going atmosphere. Known as the creative hub of the South Pacific, there are shows to see, art installations to enjoy, and rich flavours to savour here. The sounds of rare and beautiful birdlife fill the hills around the city, and the bush of the green belt provides easy-to-access sanctuary, strolls and cycle rides. The Botanical Gardens break up the buildings, even more, while an iconic, cherry-red cable car rumbles up Wellington's slope to the city's

best viewpoint, looking out over the city's scenic harbour from above. Zealandia has provided an urban home for rare and endangered birdlife, bringing many species back from the brink. Varied museums cover everything from Maori traditions to earthquake simulations and even the real-life Kraken - a displayed colossal squid. Wellington is only New Zealand's third-biggest city, but spend some time here and you'll realise that's a blessing. Eminently strollable, you can stop in at countless cool cafes to top up your caffeine levels whenever your energy is flagging - the smell of a fresh artisan espresso is never far away. The wines grown nearby are revered, and the city's craft beers are also making waves. Wander the breezy waterfront, and admire the surfers riding the wind-whipped rollers of the self-proclaimed 'coolest little capital in the world'.

Day 11 - Napier

Sip the fine wines of legendary producers, visit Cape Kidnappers' crowds of birdlife, and wander the stylish streets of the world's art deco capital, during your time in handsome Napier. Located on the huge arc of Hawke's Bay, Napier enjoys a generous Mediterranean style climate and a breezy cafe culture. A green, outdoor town, wander Marine Parade, which borders the rich blue Pacific and invites you to stroll along a tree-lined two-mile seafront. Take the gentle hike up to Bluff Hill, for panoramic views over the lively Napier Port and out towards Cape Kidnappers - given its name following a clash between Captain Cook's settlers and the local Maori population. Here you'll encounter one of the world's largest mainland gannet colonies creating a colourful cacophony by the sea. Set on sheer cliffs, the golden-headed birds are an incredible sight, swirling overhead and dancing before you. The city's renowned Art Deco architecture glows in the sunshine of New Zealand's North Island. Built following the devastating 7.8 magnitude earthquake, which ripped through the region in 1931. The rebuild, in the architectural fashion of the time, has left an authentic treasure-trove of 30s style buildings. Grapes thrive in the warm, dry climate of Napier and Hawke's Bay, which is one of New Zealand's oldest wine regions. Swirl glasses in waterfront bars or head out to walk among the vineyards of pinot gris and syrah grapes, learning of the climate conditions that help add sophisticated flavour to every bottle.

Day 12 - Day at sea

Days at sea are the perfect opportunity to relax, unwind and catch up with what you've been meaning to do. So whether that is going to the gym, visiting the spa, whale watching, catching up on your reading or simply topping up your tan, these blue sea days are the perfect balance to busy days spent



Wild Earth Travel

Small Ships, Big Adventures

wildearth-travel.com

info@wildearth-travel.com

exploring shore side.

Day 13 - Auckland

Blending beachy recreation with all the delights of a modern, diverse and thoroughly multicultural city, Auckland sits on the lucid blue-green waters of New Zealand's north island. Known as the 'City of Sails', its two harbours will tempt you with waterfront walks, and the chance to breathe fresh sea air deep into your lungs while absorbing spectacular views of Auckland's grand harbour bridge's span. Take in the true scale of Auckland's magnificent cityscape by ascending 192 metres to the Sky Tower, and looking out over the city's gleaming silver towers, which reflect on the abundant waters below. Views over the bay and adjacent islands await, and you can share elegant cocktails at this dizzying height, above the mingling yachts of Viaduct Harbour. Immerse yourself in the rich history and culture of the area at Auckland Art Gallery, Toi o Tmaki. Set beside tranquil fountains and handsomely landscaped flowerbeds of Albert Park, the French-Renaissance building houses New Zealand's most extensive art collection, and exhibits works from M ori and Pacific artists. New Zealand is world-renowned for its captivating natural scenery, and day trips across the sparkling bays, to nearby islands like Waiheke, Tiritiri Matangi, and Rangitoto, are always tempting. Discover lava caves, grape-laden vineyards and flourishing wildlife in the Hauraki Gulf's islands. You'll also find an exceptional 360-degree panorama over the city, to the horizon beyond, from the heights of ancient Mount Eden. The spectacular dormant volcano rises improbably from a city suburb, and also lends its name to Eden Park - the unusual, translucent stadium of New Zealand's mighty All Blacks.

Day 14 - Post Cruise

_ ****Post Cruise Benefits**** _
_ ****Airport transfers**** _
_ ****International flights - Economy class**** _
_ ****or Business Class upgrade**** _
_ ****Private Executive Transfers**** _

Please Note:

Itineraries are subject to change.

Wild Earth Travel

Small Ships, Big Adventures

0800 945 3327 (within New Zealand) | +64 (0) 3 365 1355 | **1800 107 715** (within Australia)

info@wildearth-travel.com | **wildearth-travel.com**

Wild Earth Travel

Small Ships, Big Adventures

wildearth-travel.com

info@wildearth-travel.com

YOUR SHIP: SILVER NOVA

YOUR SHIP:	Silver Nova
VESSEL TYPE:	Luxury Cruise
LENGTH:	801 Feet / 244.2 Meters
PASSENGER CAPACITY:	728
BUILT/REFURBISHED:	2022/2023

Silver Nova is more than a new ship by Silversea, it is a Nova way of luxury travel.

Introducing Silver Nova - the twelfth ship to join our fleet. Our newest vessel will join us in summer 2023, and will be a home away from home for up to 728 guests. Silver Nova's innovative asymmetrical design introduces the world like never before, offering an immersive destination experience to our guests. With a gross tonnage of 54,700 tons she will offer a space-to-guest ratio of 75 GRT-per-passenger becoming one of the most spacious cruise ships ever built. What's more, Silver Nova will be our most environmentally friendly, and thanks to her groundbreaking technological solutions, she will propel Silversea into a new era of sustainable cruising. It's the Nova way to travel.

S.A.L.T. Chef's Table - An intimate dining experience with a curated tasting menu highlighting regional flavors. Includes wine & cocktail pairing. Reservation fee: \$180.

S.A.L.T. Kitchen - Destination-inspired menus featuring local flavors. The Terrain menu showcases the current port, while the Voyage menu offers highlights from the journey.

Atlantide - Classic fine dining with a sophisticated ambiance.

Indulge in premium ingredients like caviar, lobster, and exquisite desserts.

La Terrazza - Authentic Italian cuisine with homemade pasta, antipasto, risotto, and bold regional wines. Enjoy stunning views from the outdoor terrace.

La Dame - French fine dining with curated tasting menus and wine pairings. Reservation fee: \$160.

Kaiseki - Japanese culinary artistry with sake, whiskey, or tea pairings. Reservation fee: \$80.

Silver Note - A lively venue with gourmet tapas, jazz, and soul music, perfect for a night of entertainment.

The Grill - Casual dining by day, transforming into the "Hot Rocks" BBQ experience at night, set in The Marquee.

Spaccanapoli - Thin, freshly made pizzas from Naples, served in an open-air setting at The Marquee.

The Pool Deck - Spacious sun deck with Silversea's largest pool and an infinity-edge whirlpool for ultimate relaxation.

The Dusk Bar - Open-air sky bar offering panoramic views and destination-inspired cocktails.

The Marquee - A relaxed outdoor venue combining The Grill and Spaccanapoli for casual dining.

Arts Cafe - A cultural hub for light bites, fresh juices, coffee, and artistic inspiration.

S.A.L.T. Bar - Locally inspired cocktails reflecting each destination.

S.A.L.T. Lab - Hands-on culinary workshops exploring local food culture.

The Shelter - An elegant cocktail bar offering signature drinks in an intimate setting.

Wild Earth Travel

Small Ships, Big Adventures

wildearth-travel.com

info@wildearth-travel.com

Dolce Vita - The ship's social hub, featuring live piano music and expertly crafted cocktails.

Panorama Lounge - A versatile space for relaxing by day and live music or DJ sets at night.

Connoisseur 's Corner - A stylish cigar lounge with premium selections.

Observation Lounge - A peaceful retreat with panoramic sea views and an in-house library.

The Venetian Lounge - A grand theatre for live performances and film screenings.

Atrium - The heart of the ship, home to key services, The Shelter, and Arts Cafe, with stunning floor-to-ceiling windows.

Boutique - Luxury shopping at sea, featuring premium brands and exclusive collections.



ollections.

Wild Earth Travel

Small Ships, Big Adventures

0800 945 3327 (within New Zealand) | +64 (0) 3 365 1355 | **1800 107 715** (within Australia)

info@wildearth-travel.com | **wildearth-travel.com**

Wild Earth Travel

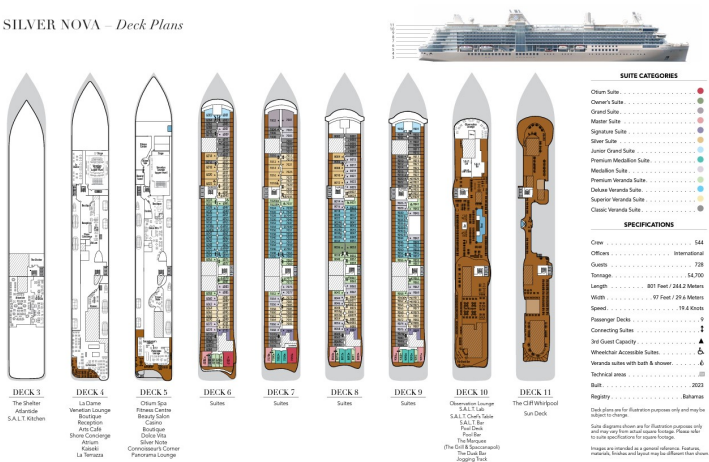
Small Ships, Big Adventures

wildearth-travel.com

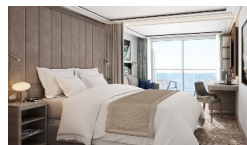
info@wildearth-travel.com

INSIDE YOUR SHIP

SILVER NOVA - Deck Plans



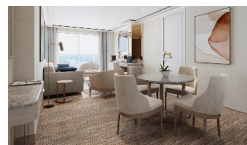
Classic Veranda



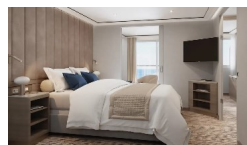
Grand 1 Bedroom



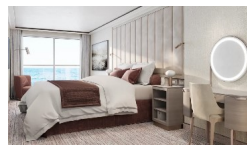
Junior Grand 2 Bedroom



Medallion



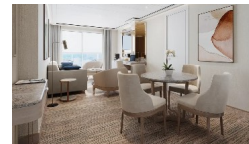
Owner 1 Bedroom



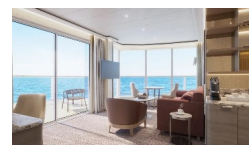
Deluxe Veranda



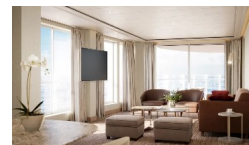
Junior Grand 1 Bedroom



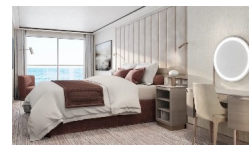
Master



Otium



Owner 2 Bedroom



Wild Earth Travel

Small Ships, Big Adventures

wildearth-travel.com

info@wildearth-travel.com

PRICING

29-Nov-2025 to 12-Dec-2025

Classic Veranda	17100 AUD pp
Superior Veranda	18200 AUD pp
Deluxe Veranda	19300 AUD pp
Premium Veranda	22300 AUD pp
Medallion	23500 AUD pp
Premium Medallion	23800 AUD pp
Junior Grand 1 Bedroom	24600 AUD pp
Silver	25500 AUD pp
Signature	27500 AUD pp
Master	29400 AUD pp
Grand 1 Bedroom	29900 AUD pp
Owner 1 Bedroom	36000 AUD pp
Otium	37700 AUD pp
Junior Grand 2 Bedroom	46300 AUD pp
Owner 2 Bedroom	56100 AUD pp