

# Wild Earth Travel

*Small Ships, Big Adventures*

**wildearth-travel.com**

**info@wildearth-travel.com**

## 15 DAYS LUXURY ICELAND & BRITISH ISLES CRUISE - EDINBURGH TO REYKJAVIK

An unforgettable journey north exploring Scotland, the Faroe Islands and Iceland. Under the guidance of Silversea's expert Expedition Team we'll go deeper, seeking out hidden coastlines and amazing wildlife. Encounter remote sanctuaries where vast colonies of migratory birds and characterful puffins dwell, and dive into Neolithic history. Soak in the remote and rural Faroe Islands, before the Land of Ice and Fire dazzles with thrilling whale-watching opportunities.



### ITINERARY

Days 0 - 1 - Pre Cruise & Edinburgh (Leith)

- \_ \*\*Pre Cruise Benefits\*\* \_
- \_ \*\*Private Executive Transfers\*\* \_
- \_ \*\*International flights - Economy class\*\* \_
- \_ \*\*or Business Class upgrade\*\* \_
- \_ \*\*Airport transfers\*\* \_

Wild Earth Travel

*Small Ships, Big Adventures*

**0800 945 3327** (within New Zealand) | +64 (0) 3 365 1355 | **1800 107 715** (within Australia)

info@wildearth-travel.com | wildearth-travel.com

# Wild Earth Travel

*Small Ships, Big Adventures*



[wildearth-travel.com](http://wildearth-travel.com)

[info@wildearth-travel.com](mailto:info@wildearth-travel.com)

within easy reach.

## Day 2 - Isle of May

The Isle of May in Scotland is owned and managed by Scottish Natural Heritage as a National Nature Reserve and is an important breeding ground for approximately one-quarter of a million seabirds. In fact, over 40,000 puffin burrows have been counted as occupied. Not only kittiwakes, shags, eiders, and guillemots but also Razorbills, Arctic Terns, Sandwich Terns and Common Terns, Lesser Gulls, Herring Gulls and Great Black-backed Gulls nest here. The island is located roughly four nautical miles off the coast of mainland Scotland and is used by biologists for surveying migrating passerines and for ringing breeding seabirds to better study their movements and breeding success. While hosting an impressive array and quantity of seabirds, the island itself is small at only 1.8 kilometers (1.1 miles) long, and less than half a kilometer (one-third of a mile) wide.

## Day 3 - Kirkwall, Orkney Islands, Scotland

Scattered just off the northern tip of Scotland, Kirkwall is the capital of the Orkney Islands - a scenic archipelago of fascinating, dual heritage. The Viking influence is deep, while a prehistoric past and World War history adds to the endless stories that these dramatic islands have to tell. Sparse and beautiful, let the sweeping seascapes of frothing waves, and dance of the northern lights, enchant you as you explore. Windswept beaches are inhabited by whooping swans, while grassy cliffs hide puffins amid their wavy embrace. Sea caves and crumbling castles - and the dramatic meeting of the North Sea and the Atlantic Ocean add to the romantic beauty of these lands, which may be physically close to the UK, but feel an entire world away. The sandstone St. Magnus Cathedral is the centrepiece of Orkney's main town - a place of winding lanes and atmospheric walks - and Britain's northernmost cathedral is a masterpiece that took 300 years to complete. Started in 1137, the beautiful cathedral is adorned with mesmerising stain-glass windows and has been evocatively named as the Light of the North. Look down over the ruined Bishop's and Earl's Palaces nearby from the tip of the cathedral's tower. Or, test out the islands' history-rich distilleries, which produce smokey single malts - said to be the best in the world. You can also venture out to Europe's best-preserved Stone Age Village, at the extraordinary World Heritage Site of Skara Brae, which offers an unparalleled vision into prehistoric life.

## Day 4 - Fair Isle, Scotland

Edinburgh is to London as poetry is to prose, as Charlotte Bronte once wrote. One of the world's stateliest cities and proudest capitals, it's built-like Rome--on seven hills, making it a striking backdrop for the ancient pageant of history. In a skyline of sheer drama, Edinburgh Castle watches over the capital city, frowning down on Princes Street's glamour and glitz. But despite its rich past, the city's famous festivals, excellent museums and galleries, as well as the modern Scottish Parliament, are reminders that Edinburgh has its feet firmly in the 21st century. Nearly everywhere in Edinburgh (the burgh is always pronounced burra in Scotland) there are spectacular buildings, whose Doric, Ionic, and Corinthian pillars add touches of neoclassical grandeur to the largely Presbyterian backdrop. Large gardens are a strong feature of central Edinburgh, where the city council is one of the most stridently conservationist in Europe. Arthur's Seat, a mountain of bright green and yellow furze, rears up behind the spires of the Old Town. This child-size mountain jutting 822 feet above its surroundings has steep slopes and little crags, like a miniature Highlands set down in the middle of the busy city. Appropriately, these theatrical elements match Edinburgh's character--after all, the city has been a stage that has seen its fair share of romance, violence, tragedy, and triumph. Modern Edinburgh has become a cultural capital, staging the Edinburgh International Festival and the Fringe Festival in every possible venue each August. The stunning Museum of Scotland complements the city's wealth of galleries and artsy hangouts. Add Edinburgh's growing reputation for food and nightlife and you have one of the world's most beguiling cities. Today the city is the second most important financial center in the United Kingdom, and the fifth most important in Europe. The city regularly is ranked near the top in quality-of-life surveys. Accordingly, New Town apartments on fashionable streets sell for considerable sums. In some senses the city is showy and materialistic, but Edinburgh still supports learned societies, some of which have their roots in the Scottish Enlightenment. The Royal Society of Edinburgh, for example, established in 1783 "for the advancement of learning and useful knowledge," remains an important forum for interdisciplinary activities. Even as Edinburgh moves through the 21st century, its tall guardian castle remains the focal point of the city and its venerable history. Take time to explore the streets--peopled by the spirits of Mary, Queen of Scots; Sir Walter Scott; and Robert Louis Stevenson--and pay your respects to the world's best-loved terrier, Greyfriars Bobby. In the evenings you can enjoy candlelit restaurants or a folk ceilidh (pronounced kay-lee, a traditional Scottish dance with music), though you should remember that you haven't earned your porridge until you've climbed Arthur's Seat. Should you wander around a corner, say, on George Street, you might see not an endless cityscape, but blue sea and a patchwork of fields. This is the county of Fife, beyond the inlet of the North Sea called the Firth of Forth--a reminder, like the mountains to the northwest that can be glimpsed from Edinburgh's highest points, that the rest of Scotland lies

Wild Earth Travel

*Small Ships, Big Adventures*

0800 945 3327 (within New Zealand) | +64 (0) 3 365 1355 | 1800 107 715 (within Australia)

[info@wildearth-travel.com](mailto:info@wildearth-travel.com) | [wildearth-travel.com](http://wildearth-travel.com)



# Wild Earth Travel

*Small Ships, Big Adventures*



[wildearth-travel.com](http://wildearth-travel.com)

[info@wildearth-travel.com](mailto:info@wildearth-travel.com)

## Day 5 - Noss, Scotland

Lying mid-way between Shetland and the Orkney islands, Fair Isle is a tiny jewel in the sea. Famous for birds, knitwear and historic shipwrecks, the island offers a warm and friendly welcome to visitors. With a population of only around 70 people this island is truly a beautiful setting and is one of Britain's most successful communities. View the cloudy light turquoise water as it drifts out to sea beneath the breath-taking Sheep Rock, rising over 100 metres, which is almost an isle of its own. Fair Isles oceanic climate brings stormy but fairly mild winters, in summer, you can expect rapid changes in the weather, sparkling sunshine can be followed by a thick blanket of mist and fog, and this makes the isle a truly inspiring area. Over the centuries the island has changed hands many times and was named the island of peace by Norse settlers. The isle has been a useful landmark for shipping but in storms and fog it is highly dangerous creating over 100 known shipwrecks such as the Spanish armada flag ship "El Gran Grifon".

Exploring the sandstone cliff faces of the Isle of Noss will reveal ledges loaded with gannets, puffins, guillemots, shags, kittiwakes, Razorbills, fulmars and Great Skuas. The island was recognized as a National Nature Reserve in 1955, and has one of Europe's largest and most diverse seabird colonies. Sheep have grazed the inland hillsides of Noss since the late 1800s and early 1900s when around twenty people lived on the island to manage the sheep farm. Along with the sheep, shaggy Shetland ponies graze the windblown slopes of Noss.

## Day 6 - Oyndarfjordur

## Day 7 - Sorvagur

## Day 8 - Seydisfjordur

Adrift between the Scottish and Norwegian coasts, the craggy Shetland Islands form the most northerly point of the British Isles. Sprawling across 100 islands, connected by sandy bridges and crisscrossing ferries, explore the highlights of this scenic archipelago outpost. With incredible Neolithic history, spanning 5,000 years of human heritage, these islands, which sit just shy of the Arctic Circle, are an isolated and immense treasure trove of history and thrilling scenery. Look out over dramatic coastline from atmospheric Iron Age towers. Sweeping, windswept beaches and wisps of sand connect islands and rugged cliffs - stand back as the sounds of the waves smashing against the shore and calling gulls fills the air. The islands are also home to some of the most adorable four-legged creatures you'll ever meet, the diminutive and wavy-fringed, Shetland Ponies who roam the hills and reach a maximum size of 42 inches. Don't be fooled, though, they are amongst the strongest and toughest of all breeds. Their existence here points to Viking history, as local horses bred with ponies brought ashore by Norse settlers, creating the lovable crossbreed that is an icon of these islands today. The towering Broch of Mousa is perhaps Europe's best-preserved Iron Age building - and one of the Shetland's finest brochs - a series of round, stone towers, believed to have been constructed around 100 BC. Seals and birdlife ensure that the isolated islands are always well-populated with life - and you can embark on hikes to discover their coastal homes. Lerwick is the islands' capital, and there's a charming welcome on offer, as you arrive before the waterfront of stone buildings, which cascade down to the shore.

A world of tumbling waterfalls and colourful creativity, Seydisfjordur is Iceland at its most epic and eccentric. A spectacular fjord lends the town its name, and the structures are dwarfed by this majestic setting, as they huddle around its glassy waters. Sail around the fjord, head out on a kayak amid the scenery, or venture to meet Puffins and other nesting birds settled on sharp cliffs. Encounter sea lions, or try some fishing as you immerse yourself in this highlight of the wild and wonderful Eastfjords. Herring fishing sustained this settlement founded by Norwegians in 1848, leading to a town of colourful wooden buildings, which gleam white against the moody scenery's palette, providing a spirit-lifting splash of colour during the harsh winter months. A rainbow pathway leads to a pretty, pastel-blue church and there's more local art and culture to unravel at Skaffell, which displays bright and bold contemporary art. Its bistro also serves up a perfect caffeine hit and refreshments. Waiting on the open jaws of the Seydisfjordur, this is a gloriously picturesque town, and the steep fjord banks reflect beautifully on the smooth waters below. The snow-capped Bjolfur mountain stands above the town and invites you to crunch along hiking trails amid untouched nature - rewarding with mesmerising views across the fjord and town below. These hills can literally sing thanks to a unique sculpture - which resonates with a traditional five-tone harmony. The remote and gorgeous Skalanes Nature reserve is a major draw, with 47 bird species resting on its dramatic bird cliff, along with countless plant varieties.

Wild Earth Travel

*Small Ships, Big Adventures*

0800 945 3327 (within New Zealand) | +64 (0) 3 365 1355 | 1800 107 715 (within Australia)

[info@wildearth-travel.com](mailto:info@wildearth-travel.com) | [wildearth-travel.com](http://wildearth-travel.com)

# Wild Earth Travel

*Small Ships, Big Adventures*

**wildearth-travel.com**

**info@wildearth-travel.com**

## Day 9 - Bakkagerdi

With their dazzlingly colourful beaks and smart black and white attire - attractive and charismatic puffins are always a delight to encounter. Iceland is home to many colonies of these adorable birds, but the 10,000 pairs that breed among the remote Borgarfjörður Eystrí fjord, close to the small fishing village of Bakkagerdi, are some of the most abundant and accessible you will find. As one of the easternmost points in Iceland, it offers some of the best opportunities in the country for viewing the charming seabirds away from the crowds. Birdwatchers can also look out for nesting gulls, fulmars, and kittiwakes during their explorations. The fjord, surrounded by the Dyrfjöll Mountains, takes its name from the distinctive formation of Álfaborg, or Elf Rock. Folklore swirls in this enchantingly beautiful location, as the locals say that this hill, close to the village of Bakkagerdi, is the home of the Icelandic elf-queen. Wonderful panoramic hiking trails snake off into the surrounding landscapes and hills, and you can soak in more of the scenery of eastern Iceland from the Zodiacs. Bakkagerdi is the largest village in the Borgarfjörður Eystrí fjord area - with approximately 100 residents - and the low-profile, jauntily painted houses are almost lost against the dramatic mountains and waters. The village's most famous former resident was Iceland's renowned and beloved painter, Johannes Kjarval. His artwork adorns the small church's altarpiece, which dates back to 1914.

## Day 10 - Husavik

There's simply nowhere better than Husavik - the European capital of whale watching - for getting up close and personal with the majestic giants of the ocean. Feel the awe as whales breach the waves around you, before gulping in air and plunging away with almighty tale flicks. Pretty Husavik is framed by the majestic Husavíkurfjall mountain, which swells up behind, creating a stunning backdrop for the town's tiny wooden warehouses, cherry red houses and undulating fishing ships. The little wooden church has been a beacon of light, guiding tired fishermen back to the shores of Iceland's oldest settlement, since 1907. Let the wind rip through your hair and the sea speckle your face, as you ride waves out among the region's almighty marine creatures, who throw their weight around so spectacularly. Sail among gentle giants in Shaky Bay, spotting humpbacks, minke whales and the world's biggest - blue whales. You may also see teams of smaller white-beaked dolphins skipping across the waves, displaying the full range of acrobatic skills. The town's whale museum is an interesting journey through Iceland's relationship with the sea giants, while its restaurants serve up local specialities - taste juicy reindeer burger and plokfiskur, a buttery mash of local fish. Hikes into the surrounding countryside

can take you up around Lake Botnsvatn, to views down from the slopes of the Husavíkurfjall - where purple spired lupin flowers spill down amongst the emerald slopes. From the summit, look out over views of the bay, reaching out to the crumpled snowy peaks beyond. Or feel the full force of this land of natural power, at Dettifloss Waterfall, one of Europe's most powerful, thrashing flumes.

## Day 11 - Djupavik

Almost swallowed whole by the scenic embrace of Iceland's Westfjords, tiny Djupavik enjoys a starkly beautiful location, which echoes with forgotten industry. This northwestern haven is often cut off by winter's heavy snows and reachable only by a winding road, adding to the aura of distant adventure. The ceaseless murmur of Djupavíkurfoss waterfall calls visitors ashore to a small huddle of cherry red houses trimmed in cream beside the glistening fjord waters. Set in one of the most sparsely populated regions on the island, the shore is dominated by an incongruous, sprawling factory. When built, it was the largest concrete structure in Iceland and a state-of-the-art hub of advanced automation and entrepreneurship. Now hauntingly silent, the abandoned herring factory, which dates back to 1934, serves as an eerie reminder of the once-thriving trade that sprung up in an unlikely manner in this far-flung corner of Iceland. Explore the remains, including the rusting ship that once served as a dormitory for the factory's male workers and now rests forlornly near the water. Nowadays, the factory's shell has been carefully and creatively repurposed as an evocative art gallery and hotel. Hikers can wander amid the fjord's beautiful setting, with trails offering explorations of the tumbling waterfall behind and widescreen views of the picturesque, moody Reykjarfjörður fjord scenery below.

## Day 11 - Veidileysufjörður

Discover northern Iceland's fantastic, outlying beauty as you cruise the majestic Veidileysufjörður. Nestled away in the scenic Westfjords, relatively few visitors reach this secluded area. Enjoy privileged access as we sail into the waters of the fjord, with its steep, bowl-like valley sides. Veidileysufjörður's serene isolation makes it an ideal locale for revelling in Iceland's grandiose natural glory, and you can admire views of snow-capped peaks contrasting sharply against the deep navy-blue hues of the North Atlantic. At the fjord's terminus, a burbling waterfall tumbles its way leisurely down the emerald hillside from above. The pristine fjord is also a place to look out for Iceland's incredible marine life; during summer, humpback whales and playful seals often frequent its inky waters. Soak in the silence and serenity, punctuated

Wild Earth Travel

*Small Ships, Big Adventures*

**0800 945 3327** (within New Zealand) | +64 (0) 3 365 1355 | **1800 107 715** (within Australia)

info@wildearth-travel.com | **wildearth-travel.com**



# Wild Earth Travel

*Small Ships, Big Adventures*



**wildearth-travel.com**

**info@wildearth-travel.com**

only by the calls of seabirds like Black-legged Kittiwakes and Common Guillemots, which swoop above the water's surface, their calls echoing across the still waters. Just beyond the northern mountains of Veidileysufjörður lies Djupavik fjord, which boasts its own attractive waterfall and a repurposed historic herring factory.

## Day 12 - Dynjandi Waterfalls

Iceland is well-known for its spectacular waterfalls. The iconic Dynjandi waterfall, located in the Westfjords region, is regarded as one of Iceland's most impressive and majestic waterfalls. At the top, the cascading water is roughly 100 feet wide and tumbles down about 330 feet into the fjord. Its name Dynjandi means, "the thundering one" and its vast size, enormous sound, and sheer force is overwhelming. It has also been nicknamed, 'The Bridal Veil' because of the way the water sprays and spreads over the rocks.

## Day 13 - Reykjavik

The capital of Iceland's land of ice, fire and natural wonder, Reykjavik is a city like no other - blossoming among some of the world's most vibrant and violent scenery. Home to two-thirds of Iceland's population, Reykjavik is the island's only real city, and a welcoming and walkable place - full of bicycles gliding along boulevards or battling the wind when it rears up. Fresh licks of paint brighten the streets, and an artistic and creative atmosphere embraces studios and galleries - as well as the kitchens where an exciting culinary scene is burgeoning. Plot your adventures in the city's hip bars and cosy cafes, or waste no time in venturing out to Iceland's outdoor adventures. Reykjavik's buildings stand together - below the whip of winter's winds - together with the magnificent Hallgrímskirkja church, with its bell tower rising resolutely over the city. Iceland's largest church's design echoes the lava flows that have shaped this remote land and boasts a clean and elegant interior. The Harpa Concert Hall's sheer glass facade helps it to assimilate into the landscape, mirroring back the city and harbour. Its LED lights shimmer in honour of Iceland's greatest illuminated performance - the northern lights. Walk in the crusts between continents, feel the spray from bursts of geysers and witness the enduring power of Iceland's massive waterfalls. Whether you want to sizzle away in the earth-heated geothermal pools, or hike to your heart's content, you can do it all from Reykjavik - the colourful capital of this astonishing outdoor country.

## Day 14 - Post Cruise

\_\_ **\*\*Post Cruise Benefits\*\*** \_\_  
\_\_ **\*\*Airport transfers\*\*** \_\_  
\_\_ **\*\*International flights - Economy class\*\*** \_\_  
\_\_ **\*\*or Business Class upgrade\*\*** \_\_  
\_\_ **\*\*Private Executive Transfers\*\*** \_\_

Please note:

Itineraries are subject to change.

Wild Earth Travel

*Small Ships, Big Adventures*

**0800 945 3327** (within New Zealand) | +64 (0) 3 365 1355 | **1800 107 715** (within Australia)

info@wildearth-travel.com | **wildearth-travel.com**

# Wild Earth Travel

*Small Ships, Big Adventures*

**wildearth-travel.com**

**info@wildearth-travel.com**

## YOUR SHIP: SILVER WIND

<b>YOUR SHIP:</b>	<b>Silver Wind</b>
<b>VESSEL TYPE:</b>	<b>Small Luxury Cruise Ship</b>
<b>LENGTH:</b>	<b>156.7 metres</b>
<b>PASSENGER CAPACITY:</b>	<b>274</b>
<b>BUILT/REFURBISHED:</b>	<b>1995 / Refurbished</b>

A major upgrade in December 2018 saw Silver Wind looking better than ever. A second refurbishment in summer 2021 will see her benefitting from a strengthened to ice-class hull and will make her one of the most adaptable ships in our fleet. Still timelessly elegant, still luxuriously relaxed, her improved cruising versatility means she is able to whizz from the Polar Regions at the ends of the earth to the iconic ports of the Mediterranean with fluid ease. So whether you want to get up close and personal to penguins in Antarctica or laze on the golden sands of the Caribbean, get ready for a wealth of diverse destination experiences, in traditional Silversea comfort.

### Dining

**The Grill.** Soft breezes and ocean views beckon at the Grill, especially as the sun goes down when cruise guests gather for cocktails at the outdoor bar and talk about the day's events.

**La Terrazza.** Authentic Italian recipes and the freshest, sustainable ingredients come together in this restaurant at sea.

**The Restaurant.** Enjoy Continental and regional specialities, as well as sweeping ocean views in our main dining room.

**La Dame.** La Dame features a menu of seasonally inspired dishes prepared with the freshest locally sourced ingredients.

### Public Areas

**Pool Deck.** Chaise lounges arranged in the sun or shade. Bubbling whirlpools. The pool water refreshing in warmer climates, heated for cooler weather.

**Reception.** Be sure to visit the Reception area, where our experts can provide invaluable information to help you get the most out of your cruise.

**Fitness Centre.** The Fitness Centre offers world-class equipment, classes, and personalized services.

**Connoisseur's Corner.** If you appreciate good cognac or premium cigars, be sure to visit the Connoisseur's Corner to see the ship's exceptional selection.

**Boutique.** There is a wealth of luxury shopping experiences aboard all Silversea ships, featuring the most distinctive and appealing brands from across the globe.

**The Show Lounge.** Applaud a broad spectrum of entertainment -- from full-scale production shows and classical soloists, to cultural entertainment and feature films.

**Panorama Lounge.** Relax and unwind in the Panorama Lounge, a sophisticated yet amicable space offering beautiful ocean views as you enjoy your cruise.

**Zagara Beauty Spa.** Come and indulge in a luxurious spa treatment. Facials, body wraps, massages: the spa is the perfect place to unwind.

**Dolce Vita.** Dolce Vita is the gathering place for our savvy travellers of the world, a place where guests mingle and exchange stories and where new faces become lifelong friends.

**Zagara Beauty Salon.** Maintain your fresh look throughout your

Wild Earth Travel

*Small Ships, Big Adventures*

**0800 945 3327** (within New Zealand) | +64 (0) 3 365 1355 | **1800 107 715** (within Australia)

info@wildearth-travel.com | **wildearth-travel.com**



# Wild Earth Travel

*Small Ships, Big Adventures*



**wildearth-travel.com**

**info@wildearth-travel.com**

luxury cruise at the Zagara Beauty Salon. Services are available for men and women.

Observation Library. The Observation Library boasts exceptional views overlooking the ocean as it stretches out below you while you enjoy your cruise.

Photo Studio. The Photo Studio offers a professional space for budding photographers to retouch, print and display their work.



their work.

Wild Earth Travel

*Small Ships, Big Adventures*

**0800 945 3327** (within New Zealand) | +64 (0) 3 365 1355 | **1800 107 715** (within Australia)

info@wildearth-travel.com | **wildearth-travel.com**

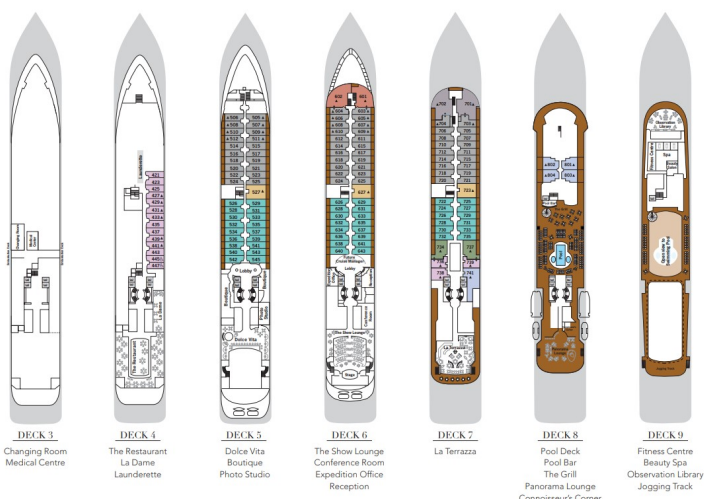
# Wild Earth Travel

*Small Ships, Big Adventures*

[wildearth-travel.com](http://wildearth-travel.com)

[info@wildearth-travel.com](mailto:info@wildearth-travel.com)

## INSIDE YOUR SHIP



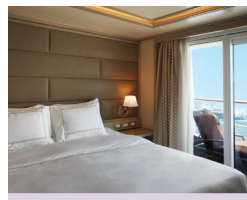
### Grand 1 Bedroom



### Grand 2 Bedroom



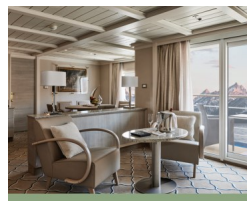
### Medallion



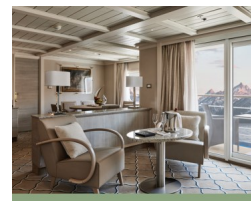
### Midship Veranda



### Owner 1 Bedroom



### Owner 2 Bedroom



Wild Earth Travel

*Small Ships, Big Adventures*

0800 945 3327 (within New Zealand) | +64 (0) 3 365 1355 | 1800 107 715 (within Australia)

[info@wildearth-travel.com](mailto:info@wildearth-travel.com) | [wildearth-travel.com](http://wildearth-travel.com)



# Wild Earth Travel

*Small Ships, Big Adventures*

**wildearth-travel.com**

**info@wildearth-travel.com**

## PRICING

05-Jun-2026 to 19-Jun-2026

Vista	21900 AUD pp
Medallion	40900 AUD pp
Silver	42900 AUD pp
Royal 1 Bedroom	45900 AUD pp
Grand 1 Bedroom	52300 AUD pp
Owner 1 Bedroom	63400 AUD pp
Royal 2 Bedroom	68900 AUD pp
Grand 2 Bedroom	75300 AUD pp
Owner 2 Bedroom	83100 AUD pp
Veranda	0 pp
Midship Veranda	0 pp

Wild Earth Travel

*Small Ships, Big Adventures*

**0800 945 3327** (within New Zealand) | +64 (0) 3 365 1355 | **1800 107 715** (within Australia)

info@wildearth-travel.com | **wildearth-travel.com**