

Wild Earth Travel

Small Ships, Big Adventures

wildearth-travel.com

info@wildearth-travel.com

13 DAYS LUXURY AUSTRALIA CRUISE - DARWIN TO MELBOURNE

Dive into all of Australia's celebrated natural glory, while exploring the spectacular eastern coast, and visiting characterful, cosmopolitan cities along the way. Sailing from tropical Darwin, discover the wonderful Aussie wildlife, immaculate coral blue seas, and white sands of the heavenly Whitsundays. Bathe in Brisbane's golden glow and spend an overnight amid the iconic landmarks of Sydney. We conclude in Melbourne, Australia's easy going, cultural hub.



ITINERARY

Day 1 - Darwin

"Australia's capital of the north is a uniquely tropical city, and a historically isolated outpost of this vast, diverse country. Reaching up towards the equator, a full 2,000 miles from Sydney and Melbourne, the city was named in honour of Charles Darwin by the British settlers who established a frontier outpost here. With a unique history, beautiful islands nearby, and a palette of

Wild Earth Travel

Small Ships, Big Adventures

0800 945 3327 (within New Zealand) | +64 (0) 3 365 1355 | **1800 107 715** (within Australia)

info@wildearth-travel.com | **wildearth-travel.com**



Wild Earth Travel

Small Ships, Big Adventures

wildearth-travel.com

info@wildearth-travel.com

sizzling Pacific flavours, colourful Darwin is an enchanting and exotic Australian destination. Crocodiles patrol the jungled waterways and tropical rainforests around Australia's gateway to the Top End. Explore via airboat to look down on the veiny waterways of the mist-laced Kakadu National Park. The sounds of chattering birdlife and the gentle splash of fountains and waterfalls will fill your ears in George Brown Darwin Botanic Gardens. Soak it all in, before kicking back and relaxing with a picnic and a crackling barbecue. The sunshine and famous tropical pink sunsets mean many visitors naturally gravitate to the city's soft sands to relax at spots like pretty Mindil Beach, as evening approaches. The adjoining market is filled with souvenirs and crafts stands and is the perfect great place to enjoy some fiery Asian flavours. Stroll the stalls, grab some food, and crack open an ice-frosted beer as the sunset show begins. It may be remote, but Darwin found itself on the front line during the Pacific War, as the Japanese air force unloaded their bombs onto the city in 1942. This relaxed unassuming city has a deeply resilient backbone, however, and you can explore the museums to learn more of the war's impact on Darwin, as well as the devastating effects of one of Australia's worst natural disasters, Cyclone Tracy in 1973."

Day 2 - 4 - Day at sea

Days at sea are the perfect opportunity to relax, unwind and catch up with what you've been meaning to do. So whether that is going to the gym, visiting the spa, whale watching, catching up on your reading or simply topping up your tan, these blue sea days are the perfect balance to busy days spent exploring shore side.

Day 5 - Townsville

Basking in 320 sunny days a year, Townsville is a welcoming, sun-soaked slice of tropical Australia. Venture to this remote city on the cusp of the tropics, to meet adorable animals, explore gorgeous coastal islands and soak up the reliable sun's bronzing glow. Rise to the rosy rock of Castle Hill - the views down over the sparkling coastal setting, and islands waiting beyond form an amazing welcome. Located on Queensland's north-east coast, the city's bay arcs around Magnetic Island - which lies just a scenic 20-minute ferry ride away. An island sanctuary of beautiful dive sites - set amid vibrant reefs and secluded beach coves - it is one of Townsville's most exquisite natural assets. The island's national park is adorned with wildlife, and you can meet more of Australia's famous residents at the family-owned Billabong Sanctuary - which cares for kangaroos, crocodiles, wallabies and more. Townsville's vast aquarium brings the magic of the region's glittering reefs to land, and the

largest reef aquarium in the world ensures that even non-divers can enjoy an authentic insight into the colourful life that blossoms offshore. Visit the beaches of lush tropical islands, or wander Townsville's pretty seaside streets and The Strand's waterfront - lined with charming 19th-century architecture and plenty of inviting cafes and alfresco eateries. Learn more of North Queensland's indigenous Bindal and Wulgurukaba communities, as you witness cultural performances, or peruse Townsville's galleries, which showcase extraordinary indigenous arts. Join the locals, to feel the region's sporting passion, as a wall of noise greets the North Queensland Cowboys rugby league team, as they take to the field here in Townsville.

Day 6 - Shute Harbor (Whitsunday Islands)

The 74 Whitsunday Islands are something truly special. Natural artistry at its finest, a sprinkle of powdery white sand, a splash of turquoise seas and a whole heap of glorious sunshine combine to create a revered masterpiece of scattered tropical islands. Shute Harbour is the perfect gateway to this alluring natural wonder, a relaxed town with dashing views of the island-pocked azure seas on its doorstep. Buffered from the bustling beach-front fun of Airlie Beach by the luscious greenery of Conway National Park, Shute Harbour is a quieter spot. It offers glorious, elevated views that will whet your appetite for the immersion in pristine island scenery that lies ahead. Venture off into rainforest-clad hills to find beautiful lookout points like Mount Rooper or head for Lion's Lookout, so you can absorb panoramic views of droplet-like islands rising from blotched turquoise water, and the spread of yachts cruising out to explore. Shute Harbour is the perfect jumping-off point for your own adventure amongst Australia's biggest and most beautiful island group - the Whitsundays. It's hard to conjure a better vision of tropical paradise, and these stunning, world-renowned islands are just a stone's throw away from the natural port at Shute Harbour. Kinetic sandscapes, heart-shaped coral reefs bursting with underwater life, and dazzlingly bright white beaches beckon you into a captivating, romantic and blissful pocket of Australian perfection.

Day 7 - Day at sea

Days at sea are the perfect opportunity to relax, unwind and catch up with what you've been meaning to do. So whether that is going to the gym, visiting the spa, whale watching, catching up on your reading or simply topping up your tan, these blue sea days are the perfect balance to busy days spent exploring shore side.

Wild Earth Travel

Small Ships, Big Adventures

0800 945 3327 (within New Zealand) | +64 (0) 3 365 1355 | **1800 107 715** (within Australia)

info@wildearth-travel.com | **wildearth-travel.com**



Wild Earth Travel

Small Ships, Big Adventures

wildearth-travel.com

info@wildearth-travel.com

Day 8 - Brisbane

They don't call it the Sunshine State for nothing, and Brisbane's modern metropolis fully exploits its sun-blessed location, basking in Queensland's generous year-round glow. The envied climate makes Brisbane a city of outdoor adventure, activity and relaxation, where days drift by surfing rollers, or relaxing in the shade of swaying palms. While Brisbane may play second fiddle to Sydney and Melbourne at times, it radiates a creative and contemporary energy, offering visitors a refreshing combination of laidback waterfront luxury and urban sophistication. Sandy islands nearby provide scenic diving and oceanside relaxation opportunities, while the city's animal sanctuaries offer opportunities to meet unbearably cute koalas and kangaroos. Brisbane's impressive skyline of metallic cylinders rises high above the broad Brisbane River below, which curves lazily through downtown. The rolling waves of the Pacific are close by, but there's something special about relaxing on soft sand in the very heart of the city, on the beautifully executed South Bank Parklands man-made beach. With golden sand and shallow lagoon waters to cool off in, it's a dreamy spot to lie back with a book, amid the landscaped gardens. Nestled in a river meander of its own, Brisbane Botanic Park glows with colour, tropical plants and wading ibis birds, and is easily walkable from the Parklands. The South Bank is the cultural hub of city, and houses the celebrated Queensland Gallery of Modern Art - a surreal and vibrant jaunt through contemporary Australian art. The city's award-winning restaurants also serve up elite food, matched with generous splashes of wine, direct from the nearby Granite Belt's wine regions.

Day 9 - Day at sea

Days at sea are the perfect opportunity to relax, unwind and catch up with what you've been meaning to do. So whether that is going to the gym, visiting the spa, whale watching, catching up on your reading or simply topping up your tan, these blue sea days are the perfect balance to busy days spent exploring shore side.

Days 10 - 11 - Sydney

With its glorious harbour, lavish golden beaches and iconic landmarks, Sydney is Australia's showpiece city. Creative and curious, discover the world-class cuisine, indigenous culture, and irresistible beach life that make Sydney one of the world's most dynamic, exciting destinations. Sydney's sparkling harbour is

the heart of a richly cultural city. Overlooked by the metallic curves of the masterpiece of an Opera House, and that grand arched harbour bridge. Take it all in from the water, and admire the iconic landmarks, which are set before the city's gleaming skyline backdrop. If you're feeling adventurous, take the legendary climb up the smooth curve of the bridge - nicknamed the Coathanger - to soak in the shining city's spread from a unique perspective. Spread out to tan on one of the world's most famous stretches of sand - Bondi Beach. Restaurants and bars burble away in the background, while the sun beams down, and surfers curl and leap over pure rollers. Swim in spectacular salty ocean pools, or wander the beautiful Bondi to Coogee coastal walk for more of this sun-gorged stretch of prime coastline. Leaving the thrills of Australia's largest city behind is surprisingly simple - take to the skies to be flown above skyscrapers and rippling ribbons of waves, out to majestic peaks, sheer cliffs and iconic rock formations - like the Three Sisters of the Blue Mountains. Or, drop in on wildlife sanctuaries caring for the country's animals - from hopping kangaroos to adorably cute, cuddly koalas.

Day 12 - Day at sea

Days at sea are the perfect opportunity to relax, unwind and catch up with what you've been meaning to do. So whether that is going to the gym, visiting the spa, whale watching, catching up on your reading or simply topping up your tan, these blue sea days are the perfect balance to busy days spent exploring shore side.

Day 13 - Melbourne

Australia's metropolitan cultural capital is a refined, contemporary and richly liveable city - which has a blend for every taste. The smells of freshly ground, artisan coffees fill the streets of this hip, youthful city, which is generously sprinkled with fine dining establishments, art galleries, and absorbing museums. With an airy outdoor lifestyle, Melbourne is a vibrant global hub of fashion, fun and festivities. Multicultural and diverse, Victoria's capital is crisscrossed by narrow alleys and splashed with street art. It's fair to say Melbourne's bearded baristas take their coffees seriously. Settle in to sample the unique coffee culture that is an essential part of Melbourne life. Looking for something a little stronger? The city's rooftop bars come alive with clinking cocktails as the sun sets. A world leader in culinary arts, take your seat at award-winning restaurants, and sample world foods alongside delicious wines, cultivated in the vineyards of the surrounding valleys. Savour a glass while cruising the arching Yarra River, for an unbeatable introduction to Melbourne. An outdoor city, it's no surprise that Melbourne is one of Australia's sporting

Wild Earth Travel

Small Ships, Big Adventures

0800 945 3327 (within New Zealand) | +64 (0) 3 365 1355 | **1800 107 715** (within Australia)

info@wildearth-travel.com | **wildearth-travel.com**



Wild Earth Travel

Small Ships, Big Adventures

wildearth-travel.com

info@wildearth-travel.com

giants. The vast bowl of Melbourne Cricket Ground serves as the city's sporting cathedral - squeezing in over 100,000 fans and hosting various sports on its hallowed, oval turf. Whether it's the rumble of hoofs during the Melbourne Cup, revs of engines during the Formula One, or thwacks of tennis balls during the Australian Open - few places can boast such a comprehensive list of high-profile sporting appeals.

Please note:

Itineraries are subject to change.



0800 945 3327 (within New Zealand) | +64 (0) 3 365 1355 | **1800 107 715** (within Australia)

info@wildearth-travel.com | **wildearth-travel.com**

Wild Earth Travel

Small Ships, Big Adventures

wildearth-travel.com

info@wildearth-travel.com

YOUR SHIP: SILVER NOVA

YOUR SHIP:	Silver Nova
VESSEL TYPE:	Luxury Cruise
LENGTH:	801 Feet / 244.2 Meters
PASSENGER CAPACITY:	728
BUILT/REFURBISHED:	2022/2023

Silver Nova is more than a new ship by Silversea, it is a Nova way of luxury travel.

Introducing Silver Nova - the twelfth ship to join our fleet. Our newest vessel will join us in summer 2023, and will be a home away from home for up to 728 guests. Silver Nova's innovative asymmetrical design introduces the world like never before, offering an immersive destination experience to our guests. With a gross tonnage of 54,700 tons she will offer a space-to-guest ratio of 75 GRT-per-passenger becoming one of the most spacious cruise ships ever built. What's more, Silver Nova will be our most environmentally friendly, and thanks to her groundbreaking technological solutions, she will propel Silversea into a new era of sustainable cruising. It's the Nova way to travel.

S.A.L.T. Chef's Table - An intimate dining experience with a curated tasting menu highlighting regional flavors. Includes wine & cocktail pairing. Reservation fee: \$180.

S.A.L.T. Kitchen - Destination-inspired menus featuring local flavors. The Terrain menu showcases the current port, while the Voyage menu offers highlights from the journey.

Atlantide - Classic fine dining with a sophisticated ambiance.

Indulge in premium ingredients like caviar, lobster, and exquisite desserts.

La Terrazza - Authentic Italian cuisine with homemade pasta, antipasto, risotto, and bold regional wines. Enjoy stunning views from the outdoor terrace.

La Dame - French fine dining with curated tasting menus and wine pairings. Reservation fee: \$160.

Kaiseki - Japanese culinary artistry with sake, whiskey, or tea pairings. Reservation fee: \$80.

Silver Note - A lively venue with gourmet tapas, jazz, and soul music, perfect for a night of entertainment.

The Grill - Casual dining by day, transforming into the "Hot Rocks" BBQ experience at night, set in The Marquee.

Spaccanapoli - Thin, freshly made pizzas from Naples, served in an open-air setting at The Marquee.

The Pool Deck - Spacious sun deck with Silversea's largest pool and an infinity-edge whirlpool for ultimate relaxation.

The Dusk Bar - Open-air sky bar offering panoramic views and destination-inspired cocktails.

The Marquee - A relaxed outdoor venue combining The Grill and Spaccanapoli for casual dining.

Arts Cafe - A cultural hub for light bites, fresh juices, coffee, and artistic inspiration.

S.A.L.T. Bar - Locally inspired cocktails reflecting each destination.

S.A.L.T. Lab - Hands-on culinary workshops exploring local food culture.

The Shelter - An elegant cocktail bar offering signature drinks in an intimate setting.

Wild Earth Travel

Small Ships, Big Adventures

wildearth-travel.com

info@wildearth-travel.com

Dolce Vita - The ship's social hub, featuring live piano music and expertly crafted cocktails.

Panorama Lounge - A versatile space for relaxing by day and live music or DJ sets at night.

Connoisseur 's Corner - A stylish cigar lounge with premium selections.

Observation Lounge - A peaceful retreat with panoramic sea views and an in-house library.

The Venetian Lounge - A grand theatre for live performances and film screenings.

Atrium - The heart of the ship, home to key services, The Shelter, and Arts Cafe, with stunning floor-to-ceiling windows.

Boutique - Luxury shopping at sea, featuring premium brands and exclusive collections.



ollections.

Wild Earth Travel

Small Ships, Big Adventures

0800 945 3327 (within New Zealand) | +64 (0) 3 365 1355 | **1800 107 715** (within Australia)

info@wildearth-travel.com | **wildearth-travel.com**

Wild Earth Travel

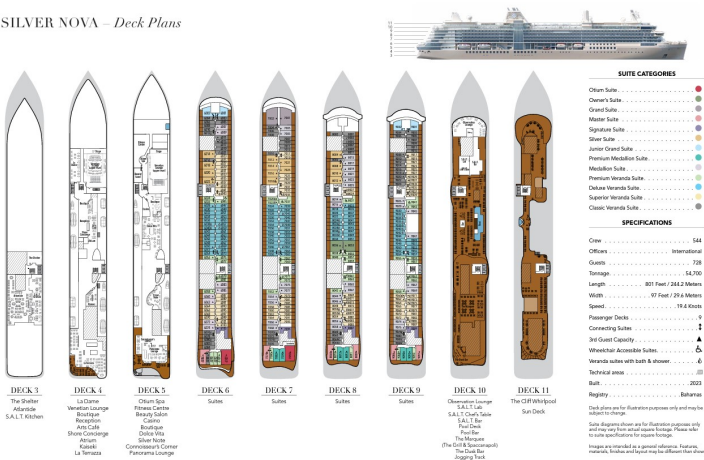
Small Ships, Big Adventures

wildearth-travel.com

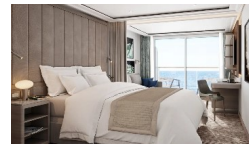
info@wildearth-travel.com

INSIDE YOUR SHIP

SILVER NOVA – Deck Plans



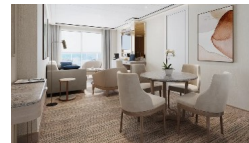
Classic Veranda



Grand 1 Bedroom



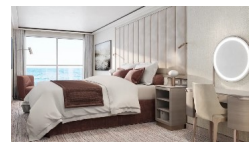
Junior Grand 2 Bedroom



Medallion



Owner 1 Bedroom



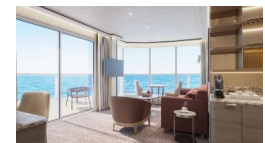
Deluxe Veranda



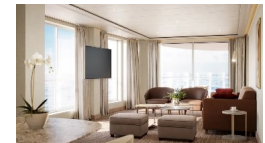
Junior Grand 1 Bedroom



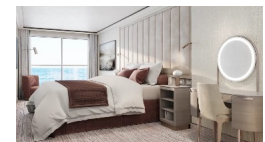
Master



Otium



Owner 2 Bedroom



Wild Earth Travel

Small Ships, Big Adventures

0800 945 3327 (within New Zealand) | +64 (0) 3 365 1355 | 1800 107 715 (within Australia)

info@wildearth-travel.com | wildearth-travel.com

Wild Earth Travel

Small Ships, Big Adventures

wildearth-travel.com

info@wildearth-travel.com

PRICING

02-Oct-2025 to 14-Oct-2025

Classic Veranda	9900 AUD pp
Superior Veranda	10100 AUD pp
Deluxe Veranda	10700 AUD pp
Premium Veranda	11400 AUD pp
Medallion	13300 AUD pp
Premium Medallion	15100 AUD pp
Junior Grand 1 Bedroom	16000 AUD pp
Silver	17200 AUD pp
Signature	22800 AUD pp
Master	23900 AUD pp
Grand 1 Bedroom	24800 AUD pp
Junior Grand 2 Bedroom	24900 AUD pp
Owner 1 Bedroom	31400 AUD pp
Otium	34500 AUD pp
Owner 2 Bedroom	41700 AUD pp