

# Wild Earth Travel

*Small Ships, Big Adventures*

**wildearth-travel.com**

**info@wildearth-travel.com**

## 11 DAYS LUXURY AUSTRALIA CRUISE - SYDNEY TO DARWIN

White sands, waving corals skirted by tropical fish, and idyllic islands - the Australia of your imagination really does exist. Turn dreams into reality as you're immersed in breathtaking seascapes, while sailing from Sydney to Darwin. Revel in Mooloolaba, and paradise spots like Airlie Beach and the Whitsundays, before reaching Cairns and the Great Barrier Reef's coral beds. Savour the incredible amenities of the Silver Nova during a scattering of sea days.



### ITINERARY

#### Day 1 - Sydney

With its glorious harbour, lavish golden beaches and iconic landmarks, Sydney is Australia's showpiece city. Creative and curious, discover the world-class cuisine, indigenous culture, and irresistible beach life that make Sydney one of the world's most dynamic, exciting destinations. Sydney's sparkling harbour is the heart of a richly cultural city. Overlooked by the metallic curves of the

Wild Earth Travel

*Small Ships, Big Adventures*

**0800 945 3327** (within New Zealand) | +64 (0) 3 365 1355 | **1800 107 715** (within Australia)

info@wildearth-travel.com | **wildearth-travel.com**



# Wild Earth Travel

*Small Ships, Big Adventures*

**wildearth-travel.com**

**info@wildearth-travel.com**

masterpiece of an Opera House, and that grand arched harbour bridge. Take it all in from the water, and admire the iconic landmarks, which are set before the city's gleaming skyline backdrop. If you're feeling adventurous, take the legendary climb up the smooth curve of the bridge - nicknamed the Coathanger - to soak in the shining city's spread from a unique perspective. Spread out to tan on one of the world's most famous stretches of sand - Bondi Beach. Restaurants and bars burble away in the background, while the sun beams down, and surfers curl and leap over pure rollers. Swim in spectacular salty ocean pools, or wander the beautiful Bondi to Coogee coastal walk for more of this sun-gorged stretch of prime coastline. Leaving the thrills of Australia's largest city behind is surprisingly simple - take to the skies to be flown above skyscrapers and rippling ribbons of waves, out to majestic peaks, sheer cliffs and iconic rock formations - like the Three Sisters of the Blue Mountains. Or, drop in on wildlife sanctuaries caring for the country's animals - from hopping kangaroos to adorably cute, cuddly koalas.

## Day 2 - Day at sea

Days at sea are the perfect opportunity to relax, unwind and catch up with what you've been meaning to do. So whether that is going to the gym, visiting the spa, whale watching, catching up on your reading or simply topping up your tan, these blue sea days are the perfect balance to busy days spent exploring shore side.

## Day 3 - Mooloolaba

Once a humble fishing village, tourism has boomed in recent years and transformed Mooloolaba into one of the most coveted of Queensland's popular holiday resorts. Located 97 km from Brisbane and set right in the heart of the Sunshine Coast, Mooloolaba is much more than an oceanfront playground. Certainly, surfers will find their nirvana here, with ideal spots for both the initiated and the beginner dotted along the coast, along with the famous surfing festival in March. But it's not all about waxing your board and point breaks - Mooloolaba Beach has featured as one of the world's top ten beaches for two years running and it looks set to stay that way. An early morning stroll will see you mingling with the locals, and with no beach goers around, be sure to take your cameras for some of the most instagrammable views you're ever likely to see. Step away from the beach and guests will find some good shopping with everything from antiques and jewellery to beach towels and sarongs for sale. Local artists set up stalls on the pretty esplanade so art lovers will be sure to take home a souvenir that is really special. Epicureans meanwhile will already no doubt looking forward to tasting some of

the famous Mooloolaba prawns, caught straight off a trawler. How's that for freshness! Try the delicious local speciality either in one of the buzzing restaurants in town or straight from the Seafood Precinct and grab a spot in the shade for a picnic! If fun in the sun isn't your cup of tea, then the Mooloolaba coastline is certainly worth seeing. Hire a motorboat, or relax on a mini-cruise and enjoy the opportunity of searching, and perhaps swimming, with whales, dolphins and turtles. Seaplanes offer another interesting way of seeing the coast with the more adventurous opting for the "doors off" experience.

## Day 4 - Day at sea

Days at sea are the perfect opportunity to relax, unwind and catch up with what you've been meaning to do. So whether that is going to the gym, visiting the spa, whale watching, catching up on your reading or simply topping up your tan, these blue sea days are the perfect balance to busy days spent exploring shore side.

## Day 5 - Airlie Beach

With the finest powder sand, knots of deep green rainforest and ankle-deep shelves of turquoise sea water - Airlie Beach is your gateway to some of the world's most spectacular beaches. This lively town welcomes wide-eyed young adventurers and the yachting crowd alike to the Whitsunday Islands' serenity, and the hiss of espresso machines, and excited chatter of adventure, spills out from its many cafes and bars. Relax at Airlie Beach Lagoon - the social hub of this town - where sun-heated saltwater invites you to wade, before flaming fresh coral trout over a barbecue as the sun sets. Or, take a seat at one of the glorious restaurants offering uninterrupted views out over the waters of Pioneer Bay, towards the 74 islands that make up the Whitsundays. These heavenly waters don't just attract humans. Humpback and pilot whales also migrate here to indulge in the warm waters and sheltered location. Spot the majestic creatures breaching and gulping in huge gasps of oxygen as you explore. Feeling adventurous? Rainforest walks to secluded pebble beaches await at Conway National Park, where difficulty-graded walking trails are available. Dive among swirls of jewel-coloured marine life, or experience the thrill of skimming into the sky on a seaplane. Take off to admire the scattered island paradises below from a stunning new aerial perspective, before landing and enjoying a picnic amid Whitehaven Beach's bliss.

## Days 6 - 7 - Cairns

Wild Earth Travel

*Small Ships, Big Adventures*

**0800 945 3327** (within New Zealand) | +64 (0) 3 365 1355 | **1800 107 715** (within Australia)

info@wildearth-travel.com | wildearth-travel.com





# Wild Earth Travel

*Small Ships, Big Adventures*

**wildearth-travel.com**

**info@wildearth-travel.com**

Warmly welcoming you to the natural wonders of the Great Barrier Reef, Cairns is a treasure trove of rich tropical beauty and incredible sea life. Swathes of rainforest spread out to the north, where you can soar over the canopy in a cable car, before looking down over narrow channels of water plummeting down gorges and crocodile-filled waterways. The diverse lands of the Atherton Tableland lie to the west, but it's the crystal-clear waters - and life-filled reefs - of Cairns' remarkable underwater world that draws universal adulation. Priding itself as the Gateway to the Great Barrier Reef, explore Cairns' constellation of colour, as you dive into the world's largest and most spectacular underwater universe. Cairns is huddled in amongst abundant swathes of rainforests, which give way to glorious crescents of golden beach. Kuranda - with its scenic railway and heritage market stalls - waits to be discovered, cloaked within the depths of the rainforest. Learn of the indigenous people of North Queensland during cultural performances, and hear the throaty reverberations of digeridoos, as you hear eternal stories handed down through time, from generation to generation. Back in Cairns, there's always time for a coffee or a beer, or a feast on fresh oysters with glasses of Cairns' white wines - boldly flavoured with mango and banana notes.

## Days 8 - 10 - Day at sea

Days at sea are the perfect opportunity to relax, unwind and catch up with what you've been meaning to do. So whether that is going to the gym, visiting the spa, whale watching, catching up on your reading or simply topping up your tan, these blue sea days are the perfect balance to busy days spent exploring shore side.

## Day 11 - Darwin

"Australia's capital of the north is a uniquely tropical city, and a historically isolated outpost of this vast, diverse country. Reaching up towards the equator, a full 2,000 miles from Sydney and Melbourne, the city was named in honour of Charles Darwin by the British settlers who established a frontier outpost here. With a unique history, beautiful islands nearby, and a palette of sizzling Pacific flavours, colourful Darwin is an enchanting and exotic Australian destination. Crocodiles patrol the jungled waterways and tropical rainforests around Australia's gateway to the Top End. Explore via airboat to look down on the veiny waterways of the mist-laced Kakadu National Park. The sounds of chattering birdlife and the gentle splash of fountains and waterfalls will fill your ears in George Brown Darwin Botanic Gardens. Soak it all in, before kicking

back and relaxing with a picnic and a crackling barbecue. The sunshine and famous tropical pink sunsets mean many visitors naturally gravitate to the city's soft sands to relax at spots like pretty Mindil Beach, as evening approaches. The adjoining market is filled with souvenirs and crafts stands and is the perfect great place to enjoy some fiery Asian flavours. Stroll the stalls, grab some food, and crack open an ice-frosted beer as the sunset show begins. It may be remote, but Darwin found itself on the front line during the Pacific War, as the Japanese air force unloaded their bombs onto the city in 1942. This relaxed unassuming city has a deeply resilient backbone, however, and you can explore the museums to learn more of the war's impact on Darwin, as well as the devastating effects of one of Australia's worst natural disasters, Cyclone Tracy in 1973."

### Please note:

Itineraries are subject to change.

# Wild Earth Travel

*Small Ships, Big Adventures*

**wildearth-travel.com**

**info@wildearth-travel.com**

## YOUR SHIP: SILVER NOVA

<b>YOUR SHIP:</b>	<b>Silver Nova</b>
<b>VESSEL TYPE:</b>	<b>Luxury Cruise</b>
<b>LENGTH:</b>	<b>801 Feet / 244.2 Meters</b>
<b>PASSENGER CAPACITY:</b>	<b>728</b>
<b>BUILT/REFURBISHED:</b>	<b>2022/2023</b>

Silver Nova is more than a new ship by Silversea, it is a Nova way of luxury travel.

Introducing Silver Nova - the twelfth ship to join our fleet. Our newest vessel will join us in summer 2023, and will be a home away from home for up to 728 guests. Silver Nova's innovative asymmetrical design introduces the world like never before, offering an immersive destination experience to our guests. With a gross tonnage of 54,700 tons she will offer a space-to-guest ratio of 75 GRT-per-passenger becoming one of the most spacious cruise ships ever built. What's more, Silver Nova will be our most environmentally friendly, and thanks to her groundbreaking technological solutions, she will propel Silversea into a new era of sustainable cruising. It's the Nova way to travel.

**S.A.L.T. Chef's Table** - An intimate dining experience with a curated tasting menu highlighting regional flavors. Includes wine & cocktail pairing. Reservation fee: \$180.

**S.A.L.T. Kitchen** - Destination-inspired menus featuring local flavors. The Terrain menu showcases the current port, while the Voyage menu offers highlights from the journey.

**Atlantide** - Classic fine dining with a sophisticated ambiance.

Indulge in premium ingredients like caviar, lobster, and exquisite desserts.

**La Terrazza** - Authentic Italian cuisine with homemade pasta, antipasto, risotto, and bold regional wines. Enjoy stunning views from the outdoor terrace.

**La Dame** - French fine dining with curated tasting menus and wine pairings. Reservation fee: \$160.

**Kaiseki** - Japanese culinary artistry with sake, whiskey, or tea pairings. Reservation fee: \$80.

**Silver Note** - A lively venue with gourmet tapas, jazz, and soul music, perfect for a night of entertainment.

**The Grill** - Casual dining by day, transforming into the "Hot Rocks" BBQ experience at night, set in The Marquee.

**Spaccanapoli** - Thin, freshly made pizzas from Naples, served in an open-air setting at The Marquee.

**The Pool Deck** - Spacious sun deck with Silversea's largest pool and an infinity-edge whirlpool for ultimate relaxation.

**The Dusk Bar** - Open-air sky bar offering panoramic views and destination-inspired cocktails.

**The Marquee** - A relaxed outdoor venue combining The Grill and Spaccanapoli for casual dining.

**Arts Cafe** - A cultural hub for light bites, fresh juices, coffee, and artistic inspiration.

**S.A.L.T. Bar** - Locally inspired cocktails reflecting each destination.

**S.A.L.T. Lab** - Hands-on culinary workshops exploring local food culture.

**The Shelter** - An elegant cocktail bar offering signature drinks in an intimate setting.

Wild Earth Travel

*Small Ships, Big Adventures*

**0800 945 3327** (within New Zealand) | +64 (0) 3 365 1355 | **1800 107 715** (within Australia)

info@wildearth-travel.com | wildearth-travel.com

# Wild Earth Travel

*Small Ships, Big Adventures*

**wildearth-travel.com**

**info@wildearth-travel.com**

Dolce Vita - The ship's social hub, featuring live piano music and expertly crafted cocktails.

Panorama Lounge - A versatile space for relaxing by day and live music or DJ sets at night.

Connoisseur 's Corner - A stylish cigar lounge with premium selections.

Observation Lounge - A peaceful retreat with panoramic sea views and an in-house library.

The Venetian Lounge - A grand theatre for live performances and film screenings.

Atrium - The heart of the ship, home to key services, The Shelter, and Arts Cafe, with stunning floor-to-ceiling windows.

Boutique - Luxury shopping at sea, featuring premium brands and exclusive collections.



ollections.

Wild Earth Travel

*Small Ships, Big Adventures*

**0800 945 3327** (within New Zealand) | +64 (0) 3 365 1355 | **1800 107 715** (within Australia)

info@wildearth-travel.com | **wildearth-travel.com**



# Wild Earth Travel

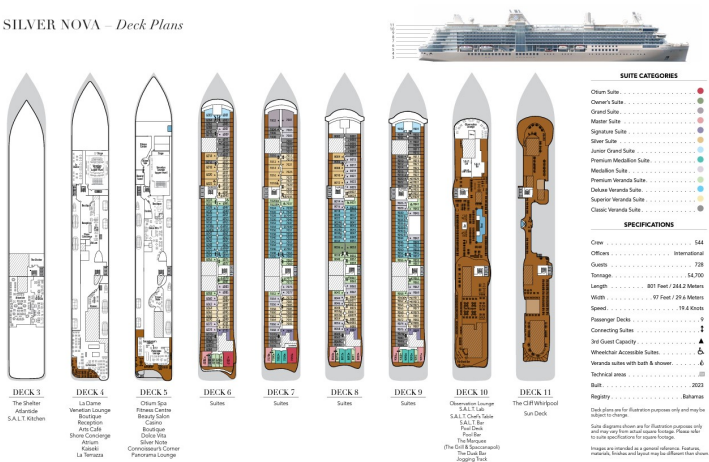
Small Ships, Big Adventures

wildearth-travel.com

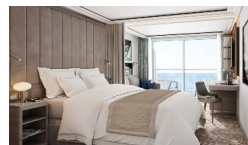
info@wildearth-travel.com

## INSIDE YOUR SHIP

SILVER NOVA - Deck Plans



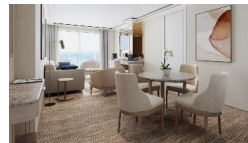
### Classic Veranda



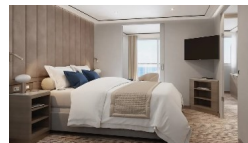
### Grand 1 Bedroom



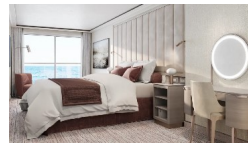
### Junior Grand 2 Bedroom



### Medallion



### Owner 1 Bedroom



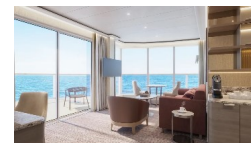
### Deluxe Veranda



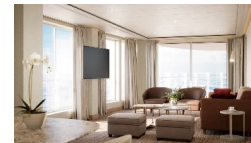
### Junior Grand 1 Bedroom



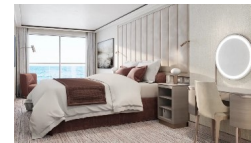
### Master



### Otium



### Owner 2 Bedroom



# Wild Earth Travel

*Small Ships, Big Adventures*

**wildearth-travel.com**

**info@wildearth-travel.com**

## PRICING

25-Jan-2026 to 04-Feb-2026

Classic Veranda	10300 AUD pp
Superior Veranda	10600 AUD pp
Deluxe Veranda	10800 AUD pp
Premium Veranda	11300 AUD pp
Medallion	12800 AUD pp
Premium Medallion	14100 AUD pp
Junior Grand 1 Bedroom	14900 AUD pp
Silver	15700 AUD pp
Signature	19800 AUD pp
Master	20600 AUD pp
Grand 1 Bedroom	20900 AUD pp
Junior Grand 2 Bedroom	24200 AUD pp
Owner 1 Bedroom	25800 AUD pp
Otium	28300 AUD pp
Owner 2 Bedroom	36000 AUD pp