



Wild Earth Travel

Small Ships, Big Adventures

wildearth-travel.com

info@wildearth-travel.com

IN-DEPTH ARCTIC EXPEDITION & POLAR BEAR SAFARI

WEALTH OF WILDLIFE

Svalbard boasts one of the Arctic's highest concentrations of polar bears. They are the world's largest land carnivores and have become a symbol of the imperiled Arctic wilderness. This is one of the best places in the world to view polar bears hunting in their preferred habitat: the pack ice. Svalbard is home to impressive colonies of nesting seabirds, a variety of seal and whale species. This is a protected wilderness where we find flowering tundra and tidewater glaciers. You can also encounter a great abundance of nesting seabirds, and land mammals such as Arctic fox and reindeer. In Greenland coastal plains are home to prehistoric-looking musk oxen and other wildlife. Franz Josef Land, part of the Russian Arctic National Park, is a nature sanctuary. Polar bears, walrus, endangered bowhead whales, and other Arctic wildlife can be spotted anywhere, anytime in and around the archipelago.

PICTURESQUE SCENERY

In Svalbard you will see a varied landscape of mountains, tidewater glaciers, and flowering tundra. Greenland is the place where you will find some of the finest scenery in the world. Extensive fjord systems provide access to the mountainous interior of Greenland where tidewater glaciers create colossal icebergs. Each night in Greenland brings a new possibility to see incredible displays of northern lights, also known as aurora borealis. Jan Mayen landscape is dominated by the heavily glaciated Beerenberg, an impressive stratovolcano considered

to be the northernmost active volcano on the earth's surface. In Iceland, in the ruggedly beautiful Westfjords, we will visit the historic fishing port of Ísafjörður. This small town embodies Iceland's trademark blend of contemporary charm and rich cultural heritage.

POLAR LEGENDS AND HISTORY

Arctic is rich with historical sites. You may find here the staging areas for many historic expeditions to the North Pole, including those of Roald Amundsen and Walter Wellman. In Svalbard, modern human endeavor can be experienced at Ny Ålesund, a former mining town that is now home to a multinational community of Arctic researchers. In addition to a museum, gift shop, and post office, visitors to this extreme northern settlement find a famous bust of Amundsen and a historic airship mast. In Franz Josef Land we encounter a stark and enigmatic landscape steeped in the drama and heroism of early polar exploration. At places like Bell Island, Cape Flora, and Cape Tegetthoff we have the opportunity to walk in the footsteps of Fridtjof Nansen, Frederick George Jackson, Julius von Payer, and other polar explorers.

Wild Earth Travel

Small Ships, Big Adventures

0800 945 3327 (within New Zealand) | +64 (0) 3 365 1355 | **1800 107 715** (within Australia)

info@wildearth-travel.com | **wildearth-travel.com**



After breakfast at your hotel, the morning is yours to enjoy Longyearbyen. Take in the views of icy fjords and glaciated mountains surrounding this historic former coal-mining town. Take advantage of shopping for souvenirs or some last-minute necessities such as cold-weather gear. Just remember, you will soon receive your very own parka to keep and waterproof boots to borrow on board the ship. For lunch, Longyearbyen offers quick and easy meal options including the most northerly pizzas and kebabs in the world.

In the afternoon, you will be transferred to the pier where we will warmly welcome you aboard the deluxe expedition vessel M/V Sea Spirit. Get settled in your spacious suite and explore the ship that will be your comfortable home during the extraordinary adventure to come. After getting underway, a full schedule of events kicks off with informative briefings and introductions from your expedition staff. After the first of many delicious dinners on board, step out onto the open decks to admire the gorgeous scenery in 24-hour daylight as we pass through the wildlife-rich waters of Isfjorden.

Day 3-5: Arctic adventures begin

The goal of this voyage is a circumnavigation of the Svalbard archipelago. We will make an attempt to go to the northeastern most part of the archipelago - the island of Kvitøya, famous for its polar bears. Along the way, we hope to experience the many facets of this incredible High Arctic territory.

Much of the pristine nature of Spitsbergen is protected by a system of national parks, and the first one on our way will be the Northwest Spitsbergen National Park, which is the crown jewel of Svalbard's scenic wonders. This area is well-known for its deep fjords flanked by serrated mountain ranges and immense tidewater glaciers calving icebergs into turquoise waters. The skies are filled with millions of mures, guillemots and little auks, whose eggs are just now hatching at countless breeding colonies located on small islands, mountainsides and sea cliffs within the park. This is also a great chance to encounter marine mammals, including beluga whales and various Arctic seals.

This wildly beautiful area contains many enchanting locations like Signehamna Bay and Kongsbreen Glacier ("Kings Glacier"). Human habitation - rare along our route - can be found at Ny Ålesund, a former mining town and airship base

explorers.

ITINERARY

Day 1: Flight to Longyearbyen and a hotel night

Welcome to Longyearbyen, the administrative center of Svalbard and starting point of our Arctic expedition! At the Longyearbyen airport, you will be greeted by our staff and transferred to a quality hotel, which has been arranged by us and is included in the price of the itinerary. You will then be free to explore the charming, walkable town center.

We recommend starting your discovery of this fascinating Norwegian High Arctic territory at the excellent Svalbard Museum, where you can also purchase hard-to-find polar books and maps. Afterward, you can enjoy an excellent dinner at one of Longyearbyen's many delightful restaurants. If you are still awake at midnight, you will notice the sun has not set. In fact, the sun will not set for the entire duration of our time in Svalbard.

Day 2: Embarkation in Longyearbyen



0800 945 3327 (within New Zealand) | +64 (0) 3 365 1355 | 1800 107 715 (within Australia)

info@wildearth-travel.com | wildearth-travel.com



that is now home to an international community of Arctic researchers. This is one of the world's most northerly settlements where you can find a museum, gift shop and post office.

Day 6: The Polar Ice Edge is straight ahead!

The Svalbard Archipelago is located halfway between the top of Norway and the North Pole, which means the Polar Ice Edge can be found to the north of the islands! This corner of Svalbard is full of stunning scenery and wildlife as well as rich history from the age of exploration. Our plan is to navigate along the ice edge towards the island of Nordaustlandet and further to the east towards Kvitøya (White Island). However, remember, our route and research opportunities are heavily dependent on the weather. But rest assured, we'll take the best possible advantage of the circumstances presented to us by nature in this wild and remote corner of the world.

Day 7-8: Following the trails of great Arctic explorers

On this part of the journey, we will make an attempt to go to the eastern and northern regions of the Svalbard Archipelago - infrequently visited aboard expedition ships - experiencing the isolation and beautiful remoteness of Svalbard's Arctic wilderness areas. Kvitøya (White Island) is one of the most rarely visited and closest islands to Franz Josef Land. This place, almost completely covered by ice, became the final resting place of the balloon expedition of the Swedish polar explorer Salomon August Andree. Kvitøya is not always accessible to expedition ships, but it may provide another opportunity to observe polar bears in their natural habitat.

Day 9-10: Great wonders of the Arctic world

During this voyage, we expect to encounter significant sea ice concentrations in the enormous Northwest Svalbard Nature Reserve, which covers the rugged northwestern parts of Spitsbergen and the entirety of Nordaustlandet, the second largest island in Svalbard. In this remote and isolated region, ice can

persist very late into the summer. The massive Austfonna ice cap rises above the stunning landscapes of the High Arctic. Part of it meets the sea along the 45-kilometer ice cliff known as Brasvellbreen--one of the great wonders of the Arctic world. The polar desert environment supports little in the way of vegetation, but hosts a prodigious number of seabirds. The cliffs of Alkefjellet are home to thousands of pink-footed geese, glaucous gulls, little auks, black-guillemots, snow buntings and (probably) barnacle geese. Historically, this icy wilderness has proven a good location for spotting polar bear and walrus.

Day 11: The picture-perfect nature of Svalbard

The Southeast Svalbard Nature Reserve is a truly pristine and rarely visited wilderness containing hundreds of uninhabited islands. On the large islands of Edgeøya and Barentsøya, broad tundra valleys support the territory's densest population of endemic Svalbard reindeer. The valleys are also important breeding areas for ground-nesting birds such as geese, eiders and sandpipers. Arctic foxes prowl the vast landscape, seeking to provide food for their young cubs, who are just now emerging from their dens. Shallow, murky seas are ideal feeding grounds for walrus resting in large numbers on gently sloping beaches. Historical sites throughout the islands provide glimpses into the region's bygone era of trapping and hunting.

South Spitsbergen National Park is a vast region of varied landscapes, including polar deserts and impassable mountain ranges. The centerpiece of this park is Hornsund, a picture-perfect fjord where countless mighty glaciers cascade from soaring mountaintops into icy inlets. The park also includes the southern shores of Bellsund, a picturesque bay where the remains of historical whaling operations can be found, including wooden boats, cabins and thousands of whale bones -- a scene from the distant past, literally frozen in time. Throughout the park, there is always a high probability of wildlife sightings. Wildflowers will be at their peak during this time.

Because of its extended length, this ambitious and in-depth Svalbard circumnavigation expedition cruise is a great chance to get a comprehensive view of the Arctic's many faces. Every day offers something new and exciting. We will not miss a single opportunity to encounter amazing Arctic wildlife, witness incredible polar scenery and walk in the footsteps of historic expeditions

Day 12-13: Back to the West Coast



Our circumnavigation of the Svalbard archipelago is coming to an end. We are back to the West Coast of the Spitsbergen archipelago, with its beautiful locations like Alkhornet Mountain (which is also known as bird heaven because its cliffs support over 10,000 breeding pairs of seabirds).

Day 14: Disembarkation in Longyearbyen, Svalbard

After filling up with one last buffet breakfast on board, we bid you farewell in Longyearbyen. We provide transfers to the airport and flight to Oslo. By this time, you may already be making plans for your next amazing trip with us into the polar world!

Please Note:

Itinerary, landings and all other activities during the cruise depend strongly on ice and weather conditions and are subject to the decisions of the Expedition Leader and the Captain of the vessel. Encounters with any mentioned wildlife cannot be guaranteed.

Wild Earth Travel

Small Ships, Big Adventures

wildearth-travel.com

info@wildearth-travel.com

YOUR SHIP: SEA SPIRIT

YOUR SHIP:	Sea Spirit
VESSEL TYPE:	Small Ship Expedition
LENGTH:	90 metres
PASSENGER CAPACITY:	114
BUILT/REFURBISHED:	1992 / 2017

Like some of the birds we see in the Arctic and Antarctica, our m/v Sea Spirit is migratory and follows the sun, northbound in the summer and southbound in the winter, always ready for spontaneous discoveries - a pod of whales, a family of polar bears or a glaciated mountain vista. She is highly maneuverable and capable of navigating the narrow fjords of East Greenland and entering the small bays of Spitsbergen.

Onboard, we create a friendly and welcoming atmosphere for all our guests. They are united by one goal - to have a memorable wilderness experience and to become real polar adventurers. We believe that first-hand travel to such places makes one an ambassador for conservation, and helps strengthen our resolve to protect these natural environments for future generations.

Public areas include: Reception, Restaurant, Bar, Outdoor Bistro, Club Lounge, Library, Presentation Lounge, Infirmary, Gym, Bridge.

We have open Bridge policy. Talk to the Captain and officers. Watch landscapes from this special angle of view. Fix your location at a map of your expedition.



Wild Earth Travel

Small Ships, Big Adventures

0800 945 3327 (within New Zealand) | +64 (0) 3 365 1355 | **1800 107 715** (within Australia)

info@wildearth-travel.com | **wildearth-travel.com**

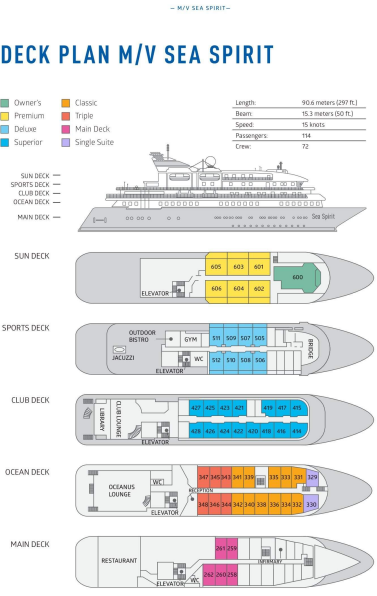


Wild Earth Travel
Small Ships, Big Adventures

wildearth-travel.com

info@wildearth-travel.com

INSIDE YOUR SHIP



Classic Suite



Deluxe Suite



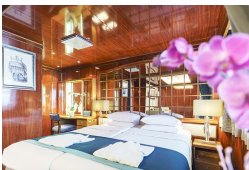
Main Deck Suite



Owner's Suite



Premium Suite



Superior Suite



Triple Classic



Wild Earth Travel
Small Ships, Big Adventures

0800 945 3327 (within New Zealand) | +64 (0) 3 365 1355 | **1800 107 715** (within Australia)

info@wildearth-travel.com | wildearth-travel.com



Wild Earth Travel

Small Ships, Big Adventures

wildearth-travel.com

info@wildearth-travel.com

PRICING

17-Jul-2025 to 30-Jul-2025

Triple Classic	16095 AUD pp
Main Deck Suite	22195 AUD pp
Classic Suite	23695 AUD pp
Superior Suite	24195 AUD pp
Deluxe Suite	27195 AUD pp
Premium Suite	29695 AUD pp
Owner's Suite	38195 AUD pp

14-Jul-2026 to 27-Jul-2026

Triple Classic	18495 AUD pp
Main Deck Suite	25095 AUD pp
Classic Suite	26795 AUD pp
Superior Suite	27395 AUD pp
Deluxe Suite	30595 AUD pp
Premium Suite	33395 AUD pp
Owner's Suite	42795 AUD pp

Photography - Free option

The Polar Regions are perhaps the most photogenic on earth, with countless beautiful scenes presenting themselves every day. Endless expanses of ice, beaches crowded with seals or penguins, sunsets over unbroken horizons, starlit skies, and even the majestic northern lights – they all present fantastic photographic opportunities – and in order to make sure that you come home with some spectacular images we offer you the chance to learn and practice your photography alongside an experienced professional. Our expert Photographer will be on hand to answer your questions and give advice, both in the form of on-board lectures and workshops on shore. Explore the key elements of photography in a fun and relaxed setting, with plenty of opportunities for questions and feedback. Learn how to see light in a new way and experiment with the techniques of composition and framing.

Optional extras & upgrades

Kayaking 885 AUD

Sea Kayak Club is typically offered on voyages that include High Arctic destinations such as Greenland, Svalbard (Spitsbergen), Franz Josef Land, or a combination of these thrilling places. Experience calving glaciers in Svalbard, cathedral-like icebergs in Greenland, or labyrinthine expanses of sea ice in the Arctic Ocean, all from our sturdy and stealthy sea kayaks. Join us for an unscripted kayaking adventure as we explore rugged coastlines and remote waters that very few people have ever paddled.

Wild Earth Travel
Small Ships, Big Adventures

0800 945 3327 (within New Zealand) | +64 (0) 3 365 1355 | **1800 107 715** (within Australia)

info@wildearth-travel.com | wildearth-travel.com